

Fast Ethernet Network TAPs

For Complete and Accurate In-Line Monitoring

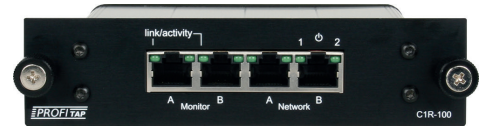
10/100BaseT Copper Series

- Profitap Fast Ethernet TAPs seamlessly duplicate full-duplex 10/100 Mbps traffic at wire speed. They provide monitoring devices with an accurate copy of the traffic with virtually no impact on the network. They monitor all 7 OSI layers, and mirror packets of all sizes and types, low-level errors, and VLAN traffic.

Profitap Copper TAPs are non-intrusive, have no IP address and isolate monitoring devices from the network to ensure complete stealth and security. Profitap Fast Ethernet TAPs' network link is fully passive, ensuring a permanent network link at all times with zero failover time or link restoration delay.

Fast Ethernet Copper TAP (ref. C1R-100)

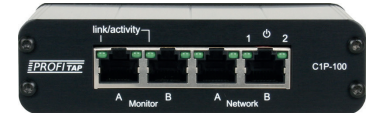
Rack-mountable TAP for the monitoring of one 10/100 in-line link. Up to 3 in 1U.



Fast Ethernet TAP (ref. C1R-100)

Portable Fast Ethernet Copper TAP (ref. C1P-100)

With an enclosure designed with portability in mind, the C1P-100 can be easily transported and deployed on the field.

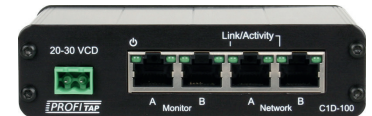


Portable Fast Ethernet TAP (ref. C1P-100)

Portable Fast Ethernet Copper TAP (ref. C1D-100)

With DIN rail mount and industrial 20-30 VDC powering

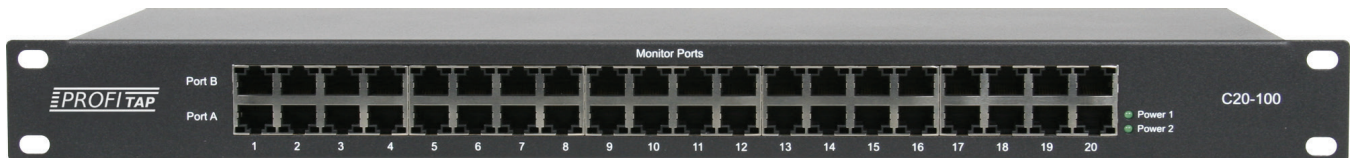
A compact, portable 10/100 TAP for use in industrial environments. Features a DIN rail clip and a 20-30 VDC power input.



Industrial Fast Ethernet TAP (ref. C1D-100)

High Density Fast Ethernet Copper TAP (ref. C20-100)

Designed for optimal data center rack space use, the C20 enables the monitoring of up to 20 in-line link in 1U rack space.



High Density Fast Ethernet TAP (ref. C20-100)

- Features**
 - Non-intrusive in-line monitoring
 - Permanent network link guaranteed
 - Zero failover time or link restoration delay
 - Monitoring of all 7 OSI layers
 - No packet loss & no point of failure
 - Fully 802.3af & VoIP compliant
 - Low power consumption
 - Tested with major analysis & monitoring systems
 - Redundant powering (C1R-100, C1P-100 & C20-100)

- Technical Specifications**

Order reference	C1R-100	C1P-100	C1D-100	C20-100
Connectors	4 x RJ45 8-pin	4 x RJ45 8-pin	4 x RJ45 8-pin	80 x RJ45 8-pin
Power input	2 x 12 VDC	2 x 12 VDC	1 x 20-30 VDC	2 x 90-240 VAC
Dimensions (WxDxH) mm	113 x 88 x 30	113 x 88 x 30	113 x 88 x 30	440 x 162 x 44
Dimensions (WxDxH) in	4.4 x 3.5 x 1.2	4.4 x 3.5 x 1.2	4.4 x 3.5 x 1.2	17.3 x 6.4 x 1.7
Front Panel dim. (WxH) mm	143 x 35			483 x 44
Front Panel dim. (WxH) in	5.6 x 1.4			19 x 1.7
Accessories	1 x 90-240 VAC PSU	Zipper Pouch 2 x RJ45 Cables 1 x 90-240 VAC PSU	20-30 VDC Terminal Block Connector	2 x C14 Cables

LOW POWER CONSUMPTION
SAVE UP TO
500 kW
PER PORT IN 10 YEARS

Profitap HQ B.V.
High Tech Campus 9
5656 AE Eindhoven
The Netherlands
+31 (0) 40 782 0880
www.profitap.com