



V-Probe Responder

Performance Testing Companion



The V-Probe Responder is a companion for the MTTplus-900 and WX150 WiFi Air Expert Modules to verify TCP and UDP throughput performance through a WiFi Access Point or Router.

Platform Highlights

With the V-Probe Responder and a WiFi Air Expert Module pair, technicians can quickly verify that upload and download speeds meet the SLA requirements during WiFi installations. The V-Probe Responder is connected via a wired Ethernet (10/100/1000Base-T) connection to the back of the AP/router under test acting as a V-Perf TCP/UDP responder, while the WiFi Air Expert is connected to the AP under test via WiFi. Once IP connectivity is established with the AP by both the WiFi Air Expert and the V-Probe responder, the WiFi Air Expert automatically discovers the V-Probe Responder and initiates the V-Perf TCP/UDP throughput performance test.

Key Features

- V-Perf TCP/UDP Responder/Server (compatible iPerf3)
- 10/100/1000Base-T support
- Measure the true Quality of Experience (QoE) on the WiFi network across the AP/Router
- Ready to use on boot-up
- Easy V-Probe discovery by a WiFi Air Expert module for quick test initiation
- Static and DHCP (default) IP addressing

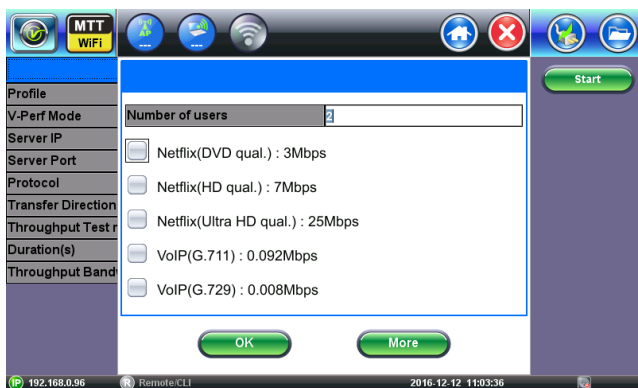
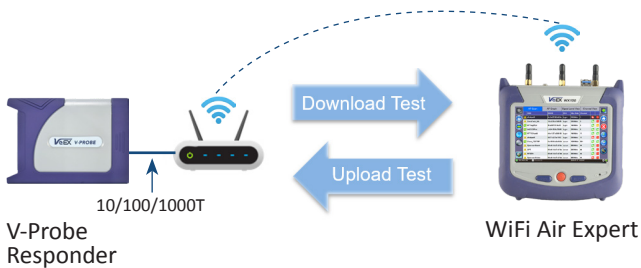
Optimize your Network

V-Perf Throughput Testing

Surveying the RF environment is a good first step for any installation to determine network performance in terms of coverage and connectivity. But real time and bandwidth-hungry applications like video and audio streaming, place a traffic load strain on the network that cannot be properly assessed with RF metrics alone. The customer's true Quality of Experience (QoE) can only be measured with traffic loads simulating an end user's application data traffic. The Air Expert V-Perf dual-ended upload and download traffic test evaluates the network's performance under load and measures QoE parameters from an end user's point of view.

Technicians can quickly establish whether the achieved upload and download rates meet SLA requirements and readiness for high bandwidth traffic like audio and video streaming, with pre-configured profiles for common applications (Netflix™, YouTube™, Skype™, VoIP....).

V-Perf dual-ended test is compatible with iPerf3 servers, WiFi Air Expert, or companion VeEX Ethernet responders, connected directly on the back of the AP to perform WiFi to Ethernet data throughput tests. The test can also be performed to a cloud-based server, qualifying WiFi and Broadband access bandwidth in one step.



Service calls and end user frustration can often be traced to the common complaint of a "slow network." The Air Expert's V-Perf test can help to unequivocally prove the WiFi network's capacity. With configurable data transmission rate and Pass/Fail threshold, technicians can quickly establish whether the achieved upload and download rates meet SLA requirements and readiness for high bandwidth traffic like audio and video streaming.



Specifications

- 10/100/1000Base-T RJ-45
- TCP and UDP V-Perf Server
- Compatible with WiFi Air Expert product family and all VeEX V-Perf applications
- DHCP and Static IP Addressing
- Configuration and operation through WiFi Air Expert User Interface or Web browser

General Specifications

Dimensions	125 x 31 x 85 mm
Weight	0.1 kg
Connectivity	Ethernet
Operating Temperature	0°C to 40°C (32°F to 104°F)
Storage Temperature	-40°C to 60°C (-40°F to 140°F)
Humidity	0% to 80%, non-condensing



VeEX Inc.
 2827 Lakeview Court
 Fremont, CA 94538 USA
 Tel: +1.510.651.0500
 Fax: +1.510.651.0505
 www.veexinc.com
 customercare@veexinc.com

© 2018 VeEX Inc. All rights reserved.
 VeEX is a registered trademark of VeEX Inc. The information contained in this document is accurate. However, we reserve the right to change any contents at any time without notice. We accept no responsibility for any errors or omissions. In case of discrepancy, the web version takes precedence over any printed literature.
 D05-00-139P B00 2018/02