

# μFalcon-S

## Multipurpose NID/EDD/NTU



- Carrier Ethernet demarcation device delivering business-class Ethernet services and mobile backhaul over fiber infrastructure
- MEF compliant, supporting Ethernet Private Line (EPL) and Ethernet Virtual Private Line (EVPL) services with flexible mapping of the user traffic into Ethernet flows
- Robust bandwidth control mechanism and Service Level Agreement (SLA) monitoring per Ethernet flow starting at customer premises
- Complete Ethernet OAM toolbox based on IEEE 802.1ag, ITU-T Y.1731 and RFC2544 for Opex reductions
- Unique Micro-burst detection (MBD) technology for microsecond granular SLA monitoring (patent pending)
- Advanced high speed protection mechanisms for link, path, and ring service resiliency

## Product Overview

The **μFalcon-S** is a highly integrated, extremely compact, high performance, and cost-effective Network Termination Unit (NTU).

This product extensively supports the evolving needs for broadband access services delivery, including high throughput, granular SLA enforcement and monitoring, flexible management capabilities, and a high degree of scalability and flexibility to cater for future requirements and technology trends.

The **μFalcon-S** primarily addresses the rapidly-expanding market of mobile backhauling and business access applications.

**DS7066R0516**

The **μFalcon-S**'s unique Dual Hybrid Core architecture (DHC) supports remote Data Plane Upgrades (DPU) to allow modification and addition of packet processing functions that require **full wire speed performance** that cannot be handled in SW.

The **μFalcon-S** is also offered in a variant with complete precision timing support based on Synchronous **Ethernet and 1588-2008** for LTE mobile backhaul applications.

The **μFalcon-S** models are equipped with 4x10/100/1000BaseT (RJ45) user ports, 4xSFP user ports, and 2xSFP PowerLink ports acting as NNIs. The user ports can be used in a flexible manner and can all operate at full wire speed. This leads to a total processing capacity of 20Gbps (non-blocking).

The **μFalcon-S** offers advanced Quality of Service (QoS) features including classification and mapping based on layer 1 through layer 4 attributes, rate limiting, and shaping per port, queue, and service.

All MEF defined services (EPL, EVPL, ELAN, etc) can be delivered with the **μFalcon-S** series and can further be protected through use of high performance mechanisms, based on G.8031 and G.8032v2, for link, path, and ring resilience.

These features, combined with a highly flexible fault propagation mechanism and unique fast failure detection algorithms yield a comprehensive and sophisticated device that can handle virtually any network topology.

The system implements current OAM standards (802.3ah, 802.1ag, Y.1731) with HW assist as well as proactive measurements and alarming facilities. To complete the OAM toolset, the **μFalcon-S** has a built in packet generator and analyzer to implement RFC2544 for quick service turn-up and verification.

A **unique Micro-Burst Detection (MBD)** technology for microsecond granular SLA monitoring is incorporated in the system, helping to detect, alert, and report nearly invisible traffic anomalies, which is essential in highly QoS-sensitive applications, such as financial, healthcare, etc (patent pending).

The **μFalcon-S** series is MEF compliant (CE2.0 certified, MEF9, MEF14, MEF20, MEF22)

The **μFalcon-S** is housed in a highly compact, half-19", 1U chassis (150mm deep only), and has an integrated internal, wide range AC or DC power supply.

All the above result in a market leading system with small form factor dimensions.

## Technical Specifications

### Interfaces & Indicators

- 4 x 10/100/1000BaseT (RJ45)
- 4 x 100/1000BaseX (802.3z/SFP)
- 2 x 100/1000BaseX (802.3z/SFP, PowerLink)
- Supported SFPs: MM, SM, SFS, CWDM, DWDM, Copper
- 1 x RS232 (RJ45) Console
- **LEDs:**
  - Power
  - Alarm
  - Link/Activity (per port)
  - Speed (per port)

### Architecture & Forwarding

- Dual Hybrid Core (DHC) HW architecture
- Data Plane Upgradable (DPU)
- 128MB RAM, 32MB flash memory
- L2 forwarding
- Flow-based forwarding
- Performance: wire-speed, on all ports, all frame sizes
- Switching fabric: 20Gbps, non-blocking
- MTU: 9.6K bytes
- MAC table: 8K addresses
- 802.3x Flow Control
- 802.1Q VLANs: 4K concurrent
- Provider bridging: 802.1ad (Q-in-Q)
- Private VLANs
- L1-L4 ACLs
- **Multicast:**
  - IGMPv3 snooping
  - MLD snooping
  - Up to 8K MC groups

### Quality of Service

- Classification based on L1-L4 info
- Ingress policing per flow (MEF BW profiles)
- Two rate, 3-color marking
- 8 HW queues/port
- Egress shaping per queue (CoS)
- Egress shaping per port
- Scheduling: Strict and DWRR, hybrid
- P-bit and DSCP remarking
- Storm control: UC, MC, BC
- QoS Control Lists

## Protection

- **Link:**
  - Link aggregation: static LAG or LACP (802.3ad)
  - Instant Link Protection (<100usec)\*
- Linear: G.8031 (<50msec)
- Ring: G.8032v2 (<50msec)
- **Fault propagation:\***
  - Port, service, combinations
  - Inverse, block actions/logic
  - Multiple concurrent rules
- Spanning tree: STP, RSTP, MSTP

## OAM & Diagnostics

- IEEE802.3ah link OAM
- IEEE802.1ag CFM (HW assisted)
- ITU-T Y.1731 PM (HW assisted)
- RFC2544 traffic generator & analyzer (up to wire speed)
- L2/L3 loopbacks with MAC/IP swap
- Micro Burst Detection (MBD) with logging and reporting
- Throughput metering
- Copper TDR
- SFP diagnostics (SFF-8472)
- Traffic mirroring

## Management

- **Interfaces:**
  - CLI: Console (RS232), Telnet, SSH1/2
  - SNMP: v1/v2c/v3, extensive MIBs
  - Web: HTTP/HTTPS
  - Management VLAN
  - IPv6 management
- **Authentication:**
  - RADIUS, TACACS+
  - Multiple local users
  - User access levels (15)
  - Management ACLs
  - 802.1x (port/MAC based)
- DHCP client & relay (incl. option 82)
- Link discovery: LLDP, CDP snooping
- **Operations:**
  - Remote System Update (TFTP or Web)
  - Configuration upload/download (TFTP or Web)
  - Auto-configuration
- **Alarms:**
  - SNMP traps
  - Syslog (internal and remote server)
  - CLI events
  - Dying gasp (802.3ah or SNMP trap)
- Remote temperature reading & alarm
- Per port and CoS detailed statistics
- Integrated NTP client and Server

## Synchronization

- Synchronous Ethernet (SE models)
- G.8261, G.8262 (SE models)
- ESMC (G.8264, SE models)
- Built-in Stratum 3 clock (SE models)
- 2 x SMA connectors for 1PPS/Clk, in/out (SE models)
- **IEEE1588-2008 (PTP):**
  - Ordinary Clock (master, slave)
  - Transparent Clock
  - Boundary Clock

## Power & Environmental

- Internal power supply
- AC/DC: 100-240VAC, 50/60Hz or 125VDC
- DC: 20-60VDC, ST connector
- **Power consumption:**
  - Maximum: <15W
  - Typical: <12W
- Passive cooling (fan-less design)
- **Operating temperature:**
  - Standard: -10°C ÷ +50°C (14°F ÷ 122°F)
  - Extended: -40°C ÷ +65°C (-40°F ÷ 149°F)
- Storage temperature: -40°C ÷ +80°C (-40°F ÷ 176°F)
- Humidity: 10-90%, non-condensing

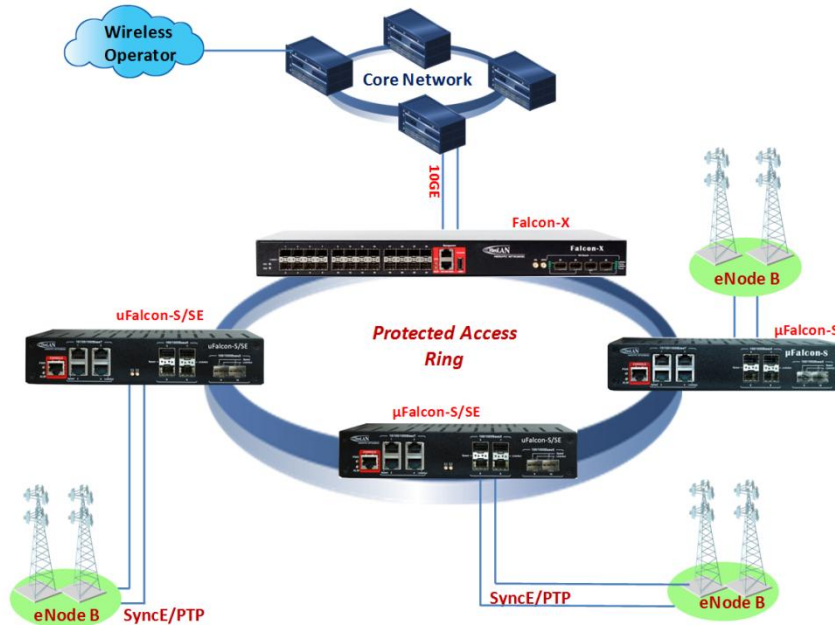
## Physical

- Dimensions (HxWxD): 44x221x150mm (1.73x8.70x5.90 inch)
- Weight: ~650g (1.43 lb)
- **Mounting:**
  - Desktop
  - Rack
- Wall
- **Accessories:**
  - Power cable
  - Console cable
  - Rack mounting kit (optional)

## Regulatory & Compliance

- **Safety:**
  - IEC EN60950-1: 2006
- **EMC:**
  - EN 300 386 V1.3.3: Class B
  - FCC CFR 47 part 15, subpart B, Class A
- MEF: CE2.0, MEF9, MEF14, MEF20, MEF22
- CE
- RoHS

## Typical Application: Wireless Backhaul



## Ordering Information

Model	Part #	Description
μFalcon-S	7066	Multi Service NTU, 4xUNI,10/100/1000BaseT ports, 4xUNI SFP ports, 2xNNI SFP ports, internal AC/DC (100-240VAC/125VDC) power supply
μFalcon-S/D	7067	Multi Service NTU, 4xUNI,10/100/1000BaseT ports, 4xUNI SFP ports, 2xNNI SFP ports, internal DC (20-60VDC) power supply
μFalcon-S/SE	7068	Multi Service NTU, 4xUNI,10/100/1000BaseT ports, 4xUNI SFP ports, 2xNNI SFP ports, SyncE (precision timing) support, internal AC/DC (100-240VAC/125VDC) power supply
μFalcon-S/SE/D	7069	Multi Service NTU, 4xUNI,10/100/1000BaseT ports, 4xUNI SFP ports, 2xNNI SFP ports, SyncE (precision timing) support, internal DC (20-60VDC) power supply
μFalcon-S/ET	7070	Multi Service NTU, 4xUNI,10/100/1000BaseT ports, 4xUNI SFP ports, 2xNNI SFP ports, internal AC/DC (100-240VAC/125VDC) power supply, extended temperature range (-40°C ÷ +65°C)
μFalcon-S/D/ET	7071	Multi Service NTU, 4xUNI,10/100/1000BaseT ports, 4xUNI SFP ports, 2xNNI SFP ports, internal DC (20-60VDC) power supply, extended temperature range (-40°C ÷ +65°C)
μFalcon-S/SE/ET	7072	Multi Service NTU, 4xUNI,10/100/1000BaseT ports, 4xUNI SFP ports, 2xNNI SFP ports, SyncE (precision timing) support, internal AC/DC (100-240VAC/125VDC) power supply, extended temperature range (-40°C ÷ +65°C)
μFalcon-S/SE/D/ET	7073	Multi Service NTU, 4xUNI,10/100/1000BaseT ports, 4xUNI SFP ports, 2xNNI SFP ports, SyncE (precision timing) support, internal DC (20-60VDC) power supply, extended temperature range (-40°C ÷ +65°C)

*Specifications are subject to change w/o prior notice*

**Note: for a complete list of available Falcon models please contact Fibrolan**

**Fibrolan Ltd. (International)**  
 Hacarmel 2, Yoqneam-Ilit, 2066724, Israel  
 Tel: +972 (4) 959 1717  
 Fax: +972 (4) 959 1718  
[info@fibrolan.com](mailto:info@fibrolan.com)

**Fibrolan Inc. (North America)**  
 350 W Passaic St., Rochelle Park, NJ 07662  
 Toll Free: (800) 406 6088  
 Tel: (201) 843 1626  
 Fax: (201) 843 1628  
[us-info@fibrolan.com](mailto:us-info@fibrolan.com)  
[www.fibrolan.com](http://www.fibrolan.com)

**Fibrolan CEE GmbH. (Central/East Europe)**  
 Kulturstraße 1  
 A-2522 Oberwaltersdorf- Austria  
 Tel.: +43 2253 21188 - 0  
 Fax: +43 2253 21188 - 99  
[office@fibrolan.at](mailto:office@fibrolan.at)