

EZ Remote Cloud Service Introduction

Using the Internet to Connect & Control a Remote Test Set
(for RXT-1200, TX300s, MTX, FX and WX platforms)

March 2020 | Rev. D00



P/N: D08-00-039

Notice:

The information contained in this document is subject to change without notice.

VeEX Inc. makes no warranty of any kind with regard to this material, including, but not limited to, the implied warranties of merchantability and fitness for a particular purpose. VeEX shall not be liable for errors contained herein or for incidental or consequential damages in connection with the furnishing, performance, or use of this material.

The features or functions described in this document may or may not be available in your test equipment or may look slightly different. Make sure it is updated to the latest software packages available and that it has any related licenses that may be required.

For assistance or questions related to this document and procedures, or to get a test set serviced by VeEX or an authorized service facility, please contact:

VeEX Inc.

Phone: +1 510 651 0500

E-mail: CustomerCare@veexinc.com

Web: www.veexinc.com

©Copyright VeEX Inc. All rights reserved. VeEX, VePAL are registered trademarks of VeEX Inc. and/or its affiliates in the USA and certain other countries. All other trademarks or registered trademarks are the property of their respective companies. No part of this document may be reproduced or transmitted electronically or otherwise without written permission from VeEX Inc.

EZ Remote Introduction

Using Internet to Connect & Control a Remote Test Set

Introduction

The EZ Remote functionality allows users to quickly and securely connect to VeEX test sets around the world, without the need for VPN, port forwarding, or public IP addresses. This VeEX-hosted service and user interface takes care of all the complex tasks required and presents users with a simple application. Connect online anytime anywhere with any computer, tablet or smartphone, using standard web browser clients for screen-sharing, remote control and access to test results. Use it for remote control, collaboration, technical support or training purposes.

The basic EZ Remote is offered by VeEX as a free of charge best-effort service. It provides public registration servers to help users and test sets establish remote sessions, without having to get IT departments involved. All you need is internet access for the test set and remote user. Feature availability and functionality may vary from product to product. (Make sure the test set is running the latest software versions available.)

VeEX's EZ Remote provides:

- **Remote Control** functionality to give users full control of remote test sets (screen mirroring and control).
- **Remote Access** functionality allows users to View, Download, Rename, Delete, Export and PDF the results.

Note: Although EZ Remote is considered a convenient and reliable on-demand service, for quick/temporary collaboration task, it should not be used in long-term mission-critical applications (VeEX offers other remote tools for long-term applications).

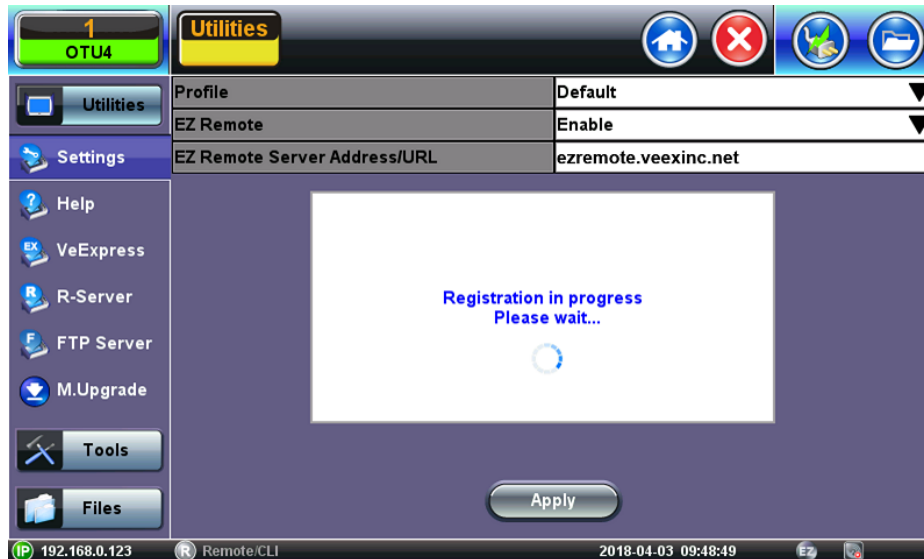
Initiate an EZ Remote Session from the Test Set

Go to **>Utilities >Tools >IP Tools** to connect the test set to a LAN using the RJ45 Ethernet management port, located on the side of the unit (recommended), or use **WiFi Wiz** to connect to a WLAN, using built-in WiFi or a compatible external USB dongle. Make sure the test set gets a local IP address (displayed on the status bar, on the lower-left corner of the screen) and that the LAN/WLAN provides access to the public internet (web).

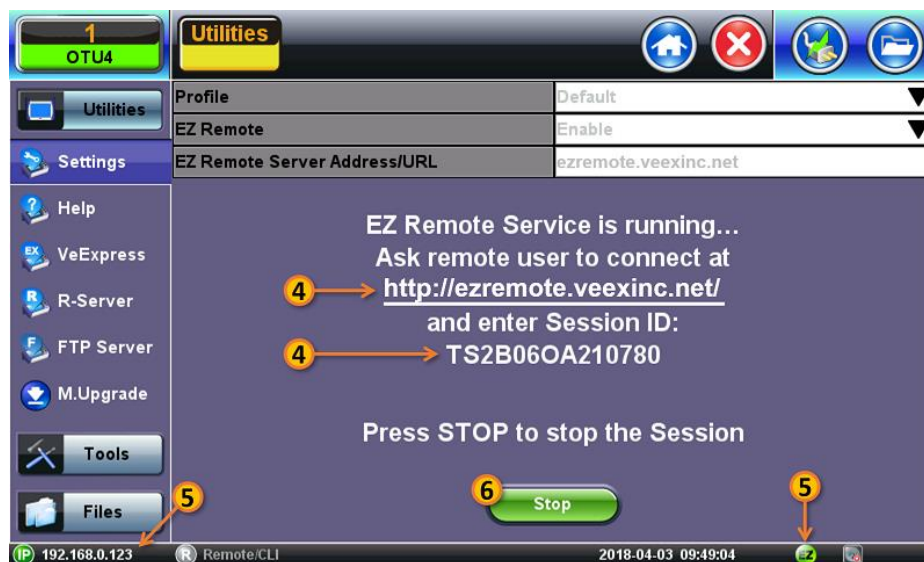
1. Go to **>Utilities >Settings >More >Remote Access** and set a custom **VNC Super User Password** (default is **pass1**).
2. Go to **>Utilities >Settings >More >EZ Remote**



- On the EZ Remote screen, set **EZ Remote** to **Enabled**, confirm the **URL** is **ezremote.veexinc.net** (without www.) and tap on **Apply** to connect and establish a session with the EZ Remote server.



- Provide the resulting **URL** (<http://ezremote.veexinc.net>), the **Session ID** and the **VNC Password** to the intended remote user, via email or text message.




- You may continue to use the test set until a remote user logs in, then both will share control over the unit. Make sure the test set remains connected to the LAN/WLAN, has an IP address, and it is connected to the Internet, so the **EZ** remote session indicator at the bottom of the screen stays green.
- When finished, use the **Stop** button to terminate the EZ Remote session and disconnect from the server.

Connect to the Remote Test Set

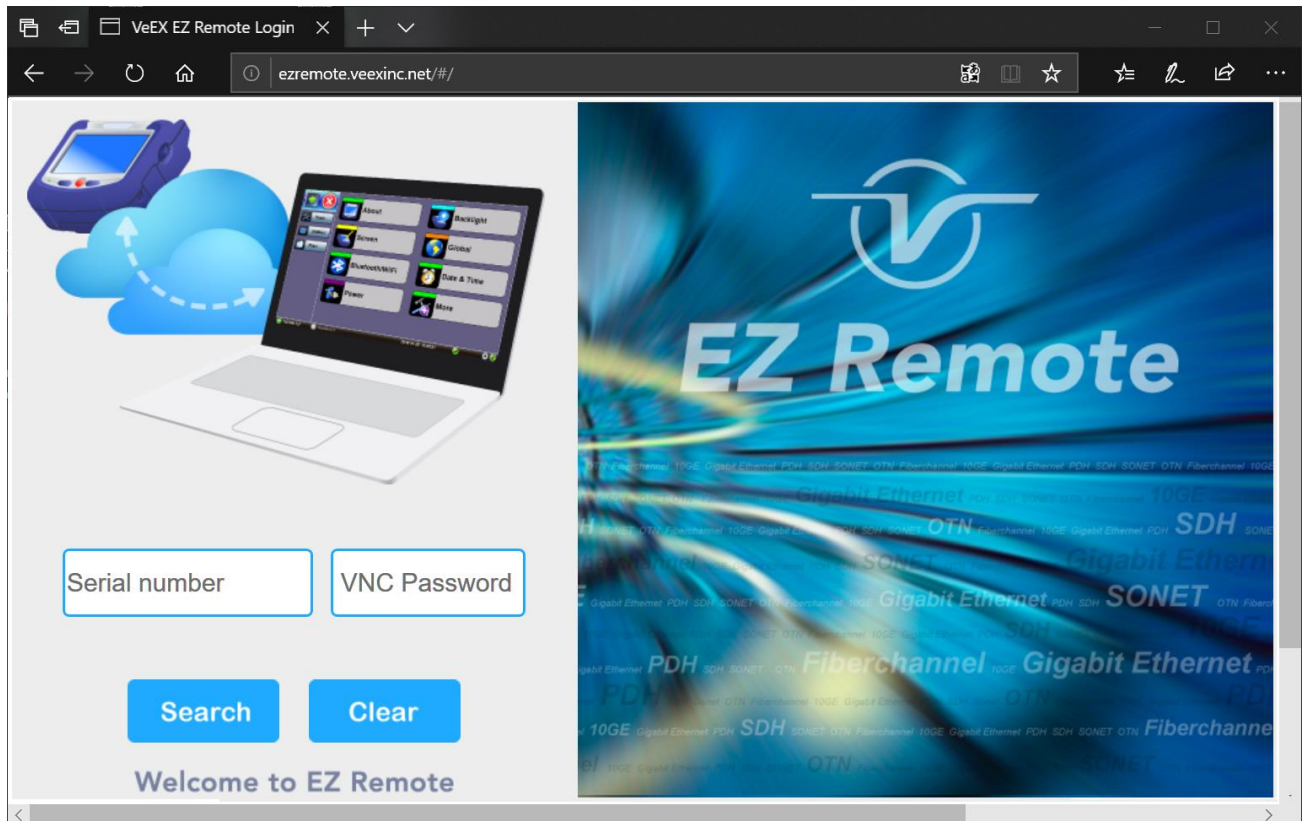
Establish a Remote Access Connection

EZ Remote provides two types of services:

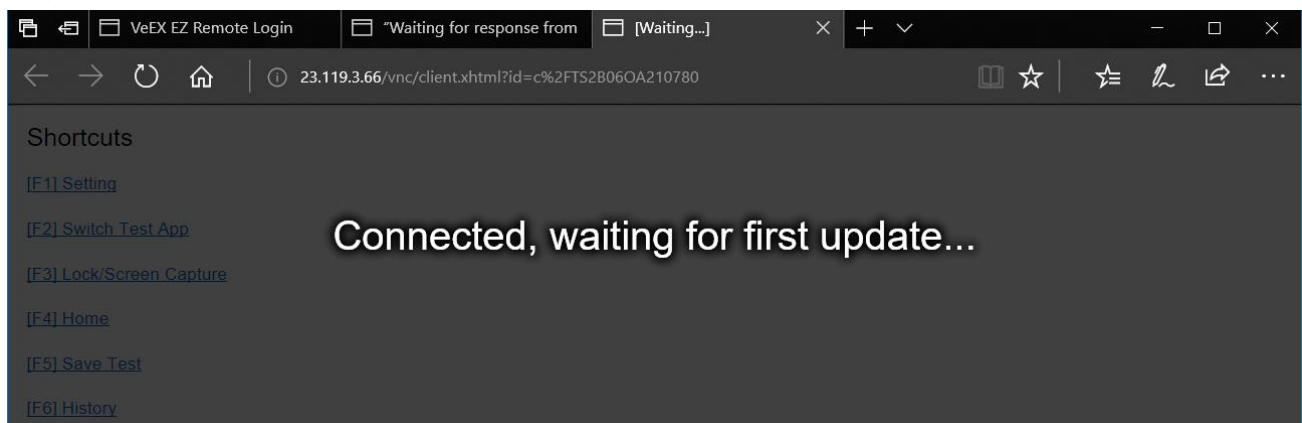
- Remote Control** (screen and mouse/touch mirroring) to operate a test set from a different location.
- Remote Platform Access** to access information stored in the remote test set, such as Test Results, Profiles, User Manual, Screen Captures (screen shots), Information about the test set (Home) and its local IP address.

 Although multiple users could simultaneously log-in to the same test set, they would be sharing the same mirrored GUI image and mouse control. This is not recommended since it is equivalent to having multiple users trying to operate one test set at the same time (also known as “mouse fight”). Nonetheless, it may be effective for training purposes with one or two extra users.

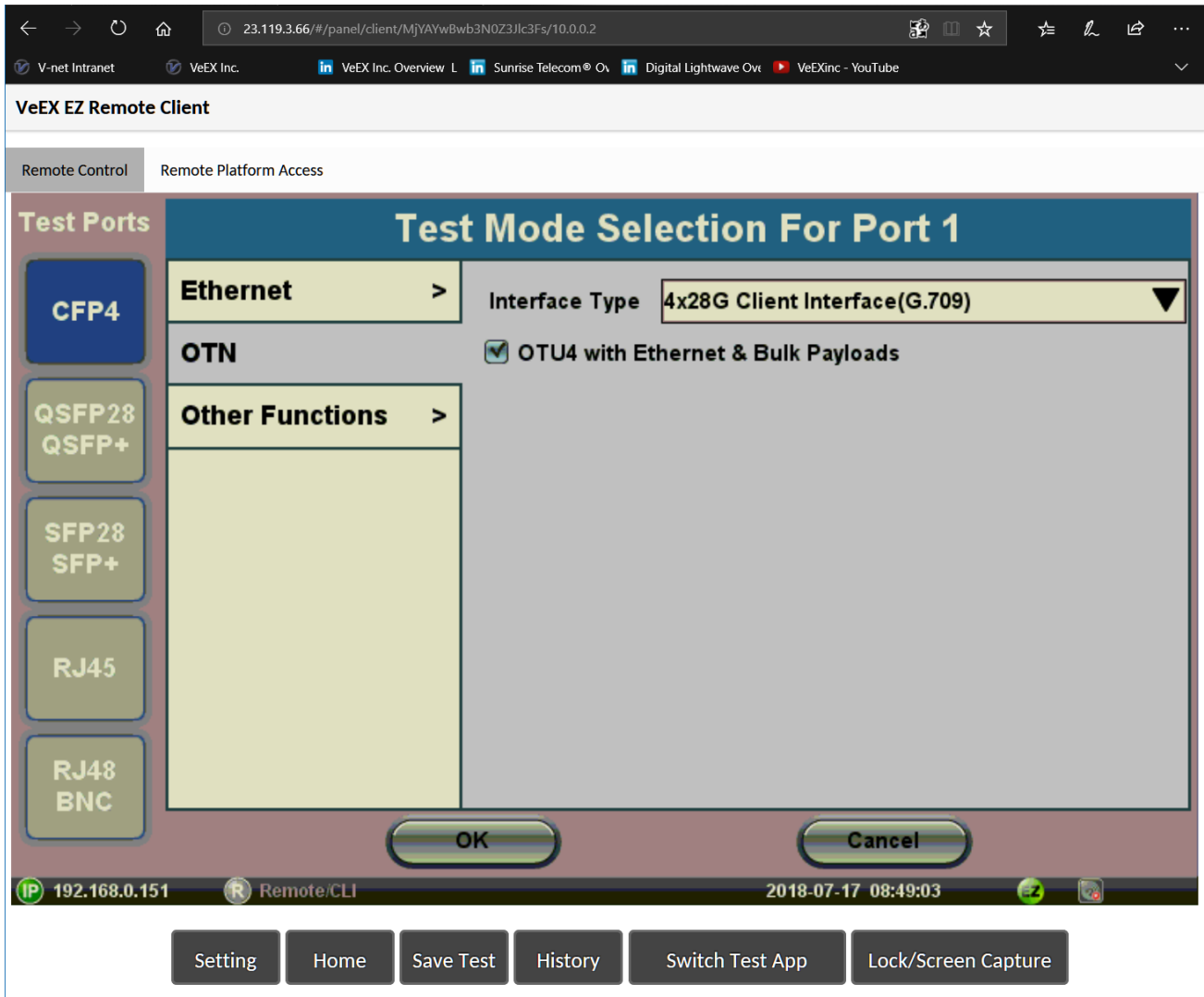
1. From a PC, Mac, Tablet or Smartphone, launch an industry-standard Web Browser application and enter the URL <http://ezremote.veexinc.net> (without the www.). You may need to enable pop-ups for your browser and be sure to authorize access to the site if confirmation is requested by the browser or OS.
2. Enter the **Serial Number** and **VNC Password** provided, making sure not to confuse zeroes (0) with Os. Click on **Search** to find the target test set and establish a peer-to-peer connection.



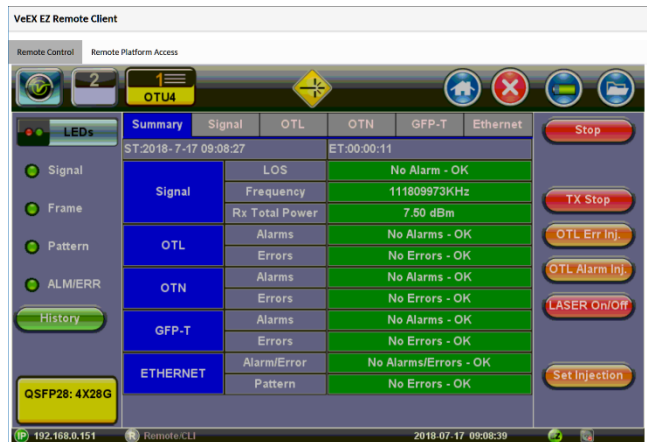
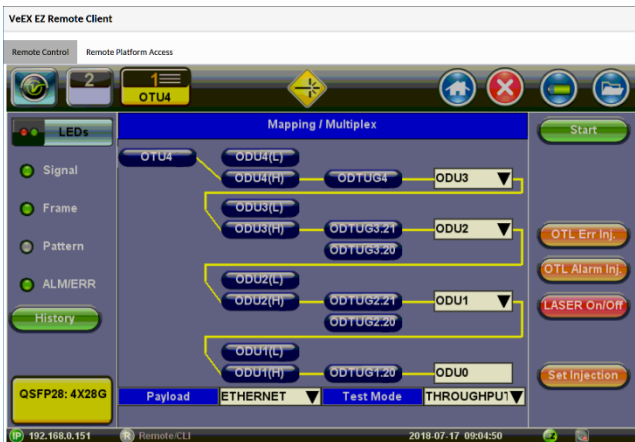
3. Once verified and connected, wait for the remote user interface to refresh. Depending on the network, this may take a few seconds.



- Depending on the type of test set used, shortcut buttons may be provided below the mirrored screen, allowing access to functions provided by physical buttons on the instrument, such as [Settings](#), [Home](#), and [Save Test](#) results, [History](#), [Switch Apps](#), [Lock/Screen Capture](#). Click or tap on these shortcut to activate their functions.

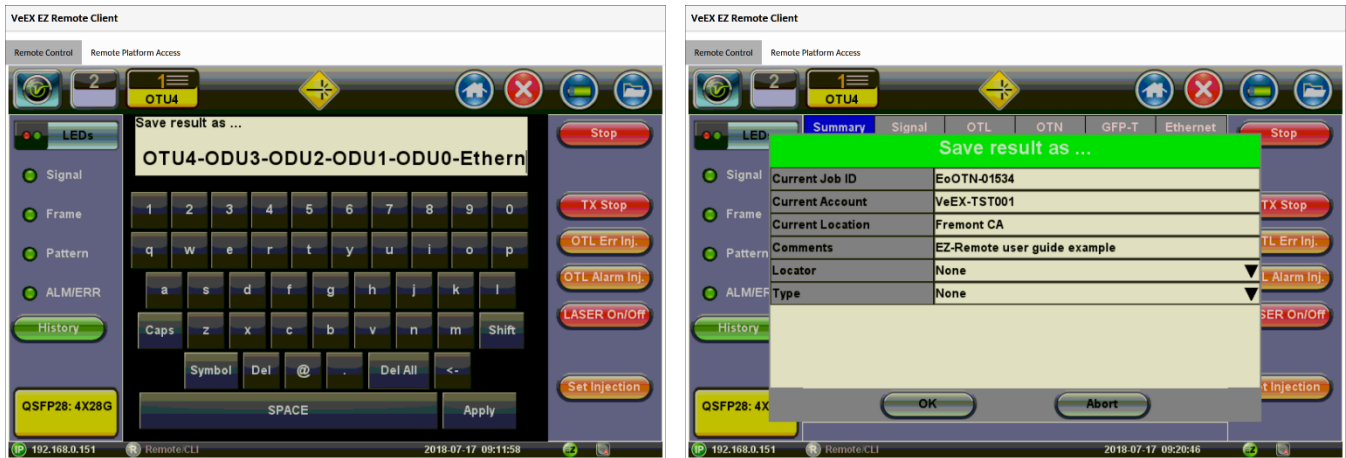


- Once the remote GUI appears, use the [Remote Control](#) tab to operate the test set in the same way you would control a local unit from its touch screen.



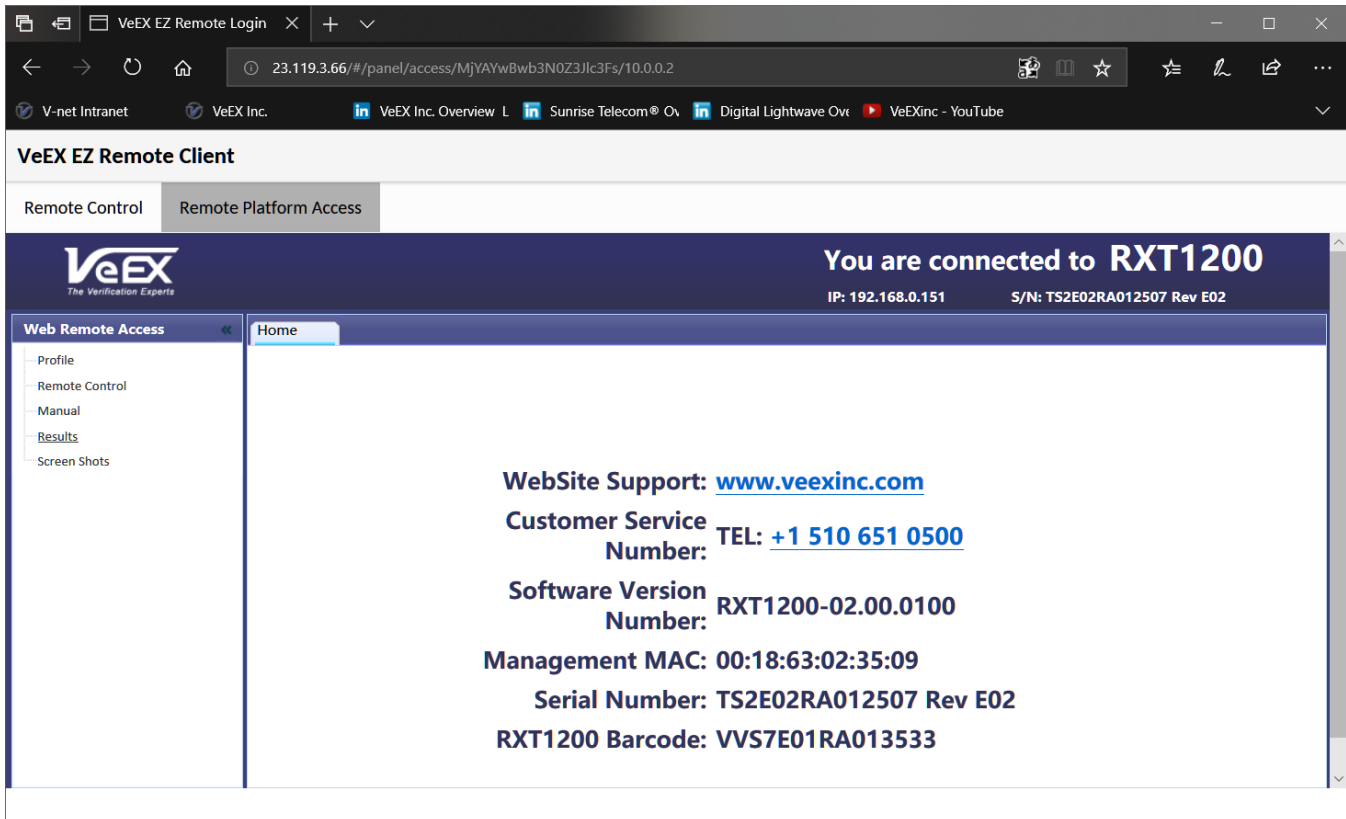
Save Test Results

To save the results of a test, from the remote computer, press the **Save** button below the screen image. Use the pop-up keypad and/or the PC keyboard to enter the file name and add any extra details (if Advanced Save is enabled).



Access Remote Test Result Files

The **Remote Platform Access** tab provides links to access test results, test profiles, screen Shots, the user manual and other information stored in the test set.



A tab will open up for each selection made, allowing for quick access to each function.

Profiles

Test Profiles are configurations saved by the user that can be retrieved and reapplied to the test set. For example, commonly used configurations and test limits/threshold can be saved as test profiles for different types of services.

Remote Control

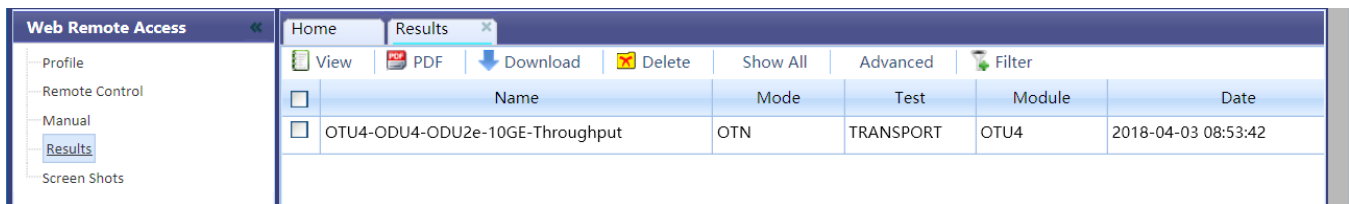
Remote Control has been replaced by the EZ Remote tab.

Manual

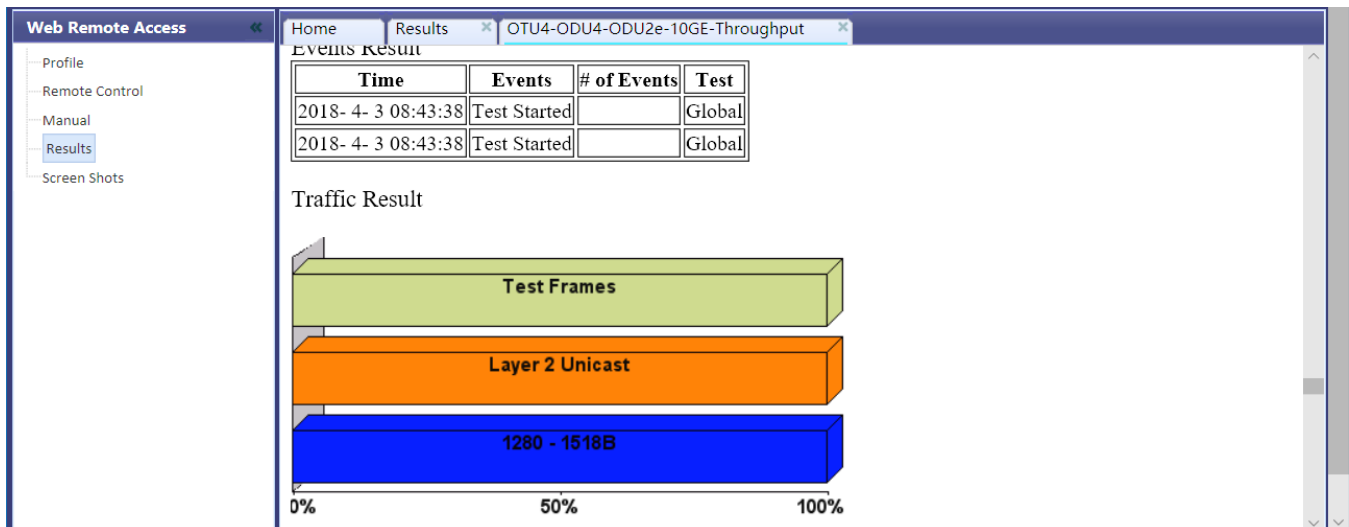
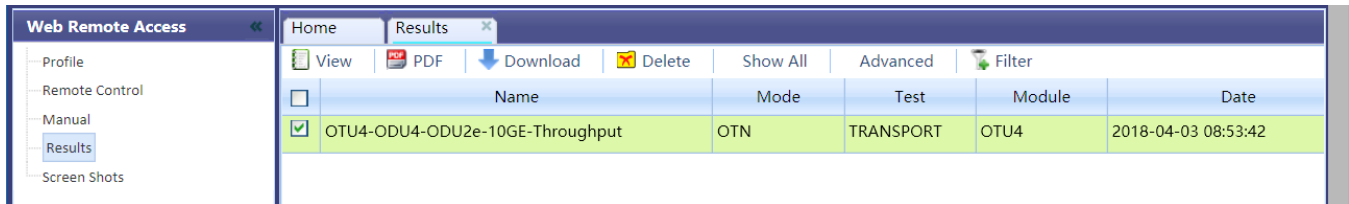
This feature provides access to the user manual that is built into the test set. In this application, the use of a local copy of the PDF file is recommended as the PDF client in the local computer is most likely faster than accessing the remote one and may offer better tools and functions, including search capabilities. User manuals can be downloaded from the products page at www.veexinc.com.

Results

Results lists all the test results files currently stored in the remote test set. Users can **View**, **Rename** and **Delete** files stored in the remote test set, as well as **Download** selected files to the local computer or convert them to **PDF** and download.



To open a test results file, select it from the list and tap on **View**.




Files can be downloaded by clicking on [Download](#) (original file format) or [PDF](#).



Screen Shots

Pictures (PNG) taken of the screen can be accessed from this link and sub-tab. Pictures can be viewed or downloaded to the local computer.

Screen captures can be made by enabling the Lock button's alternative function and then pressing the  button on the test set or from the remote computer, using the [Lock/Screen Capture](#) button below the mirrored screen or using the respective F-key on the computer keyboard. The screen capture function can be enabled in [>Utilities >Settings >Global >Save Settings >Lock/Save Screen = Save](#). The No Compression setting is recommended.

Note: While set to screen capture mode, the touch screen cannot be locked. Disable screen capture to lock the screen.

