



TTS ANZ3080



Pass

Test Time : 6/8/2021 4:45:07 PM
 Project : test
 Profile : Certification
 Operator : Default
 Cable Type / NVP : 2412 , 70%
 Connector : Generic Cat 6A

Limit : AS NZ 3080 Class E Channel
 Model : TestPro CV100
 Serial Number : Main: 4200-0103, Remote: 4200-0104
 Device Software : 3.4.R2
 Calibration Date : Wednesday, 2 June 2021
 Main Adapter : PROBE CAT 6A CHANNEL
 Remote Adapter : PROBE CAT 6A CHANNEL

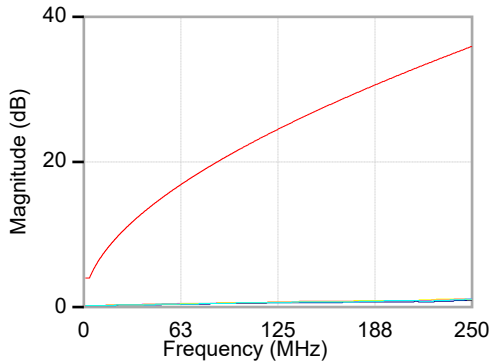
| Parameter | Result | Pair | Value | Limit |
|-----------------------------------|--------|-------|-------|--------|
| Length(m) | Info | 78 | 2.5 | 100.0 |
| Prop Delay(ns) | Pass | 12 | 12.0 | 555.0 |
| Delay Skew(ns) | Pass | 12 | 0.0 | 50.0 |
| DC Loop Resistance(Ω) | Pass | 12 | 0.113 | 25.000 |
| Res. Unbal, pair-pair(Ω) | Info | 12-36 | 0.000 | 0.200 |
| Res. Unbal, wire-wire(Ω) | Info | 12 | 0.113 | 0.200 |



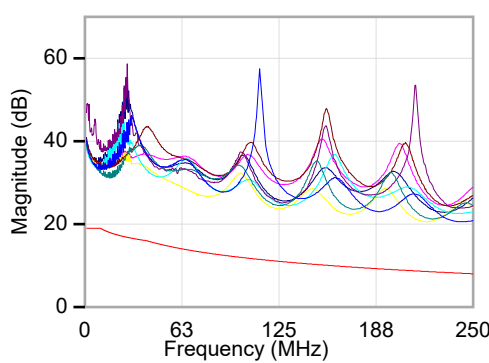
RF Parameters

| Parameter | Result | Main | | | | | | | Remote | | | | | | |
|----------------|--------|--------------|-------------|------------|------------|-------------|------------|------------|--------------|-------------|------------|------------|-------------|------------|------------|
| | | Worst Margin | | | | Worst Value | | | Worst Margin | | | | Worst Value | | |
| | | Pair | Margin (dB) | Limit (dB) | Freq (MHz) | Pair | Value (dB) | Freq (MHz) | Pair | Margin (dB) | Limit (dB) | Freq (MHz) | Pair | Value (dB) | Freq (MHz) |
| Return Loss | Info | 45 | 12.0 | 8.6 | 218.00 | 45 | 20.6 | 218.00 | 78 | 12.4 | 8.2 | 239.50 | 78 | 20.6 | 239.50 |
| Insertion Loss | Pass | 12 | 3.8 | 4.0 | 1.00 | 78 | 1.1 | 245.50 | - | - | - | - | - | - | - |
| NEXT | Info | 12-45 | 32.6 | 65.0 | 1.60 | 36-45 | 65.9 | 250.00 | 36-45 | 30.2 | 33.1 | 250.00 | 36-45 | 63.4 | 250.00 |
| PSNEXT | Info | 12 | 34.6 | 62.0 | 1.30 | 45 | 64.8 | 250.00 | 36 | 32.6 | 30.2 | 250.00 | 36 | 62.9 | 250.00 |
| ACRF | Pass | 45-36 | 22.6 | 46.5 | 7.00 | 36-45 | 38.8 | 250.00 | 45-36 | 22.6 | 45.5 | 7.75 | 45-36 | 38.7 | 250.00 |
| PSACRF | Pass | 36 | 23.7 | 38.0 | 13.00 | 36 | 36.7 | 250.00 | 36 | 23.6 | 40.4 | 10.00 | 36 | 36.8 | 250.00 |
| TCL | Info | 12 | 10.5 | 40.0 | 3.10 | 12 | 31.0 | 214.00 | 12 | -2.7 | 40.0 | 6.70 | 78 | 33.7 | 202.50 |
| ELTCTL | Info | 78 | 29.6 | 30.0 | 1.00 | 12 | 45.0 | 29.65 | 12 | 33.7 | 30.0 | 1.00 | 12 | 44.0 | 29.20 |
| ACRN | Pass | 12-45 | 36.4 | 61.0 | 1.60 | 36-45 | 65.1 | 250.00 | 45-78 | 36.4 | 61.0 | 2.65 | 36-45 | 62.2 | 250.00 |
| PSACRN | Pass | 12 | 38.5 | 58.0 | 1.30 | 45 | 63.6 | 250.00 | 45 | 39.2 | 58.0 | 2.65 | 36 | 61.8 | 250.00 |

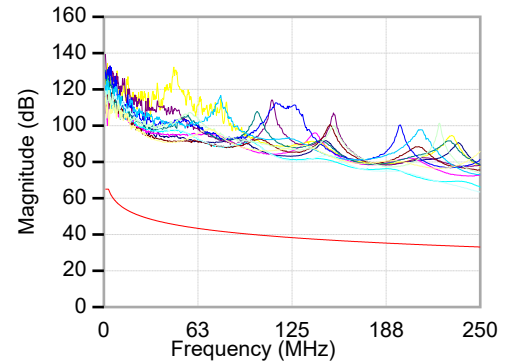
Insertion Loss



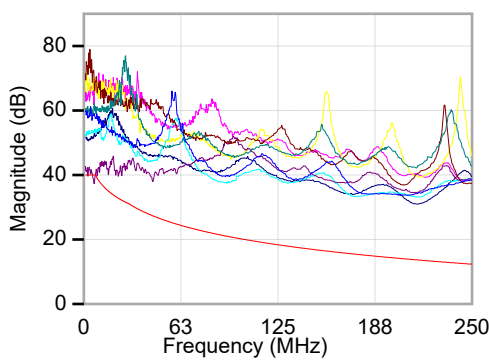
Return Loss



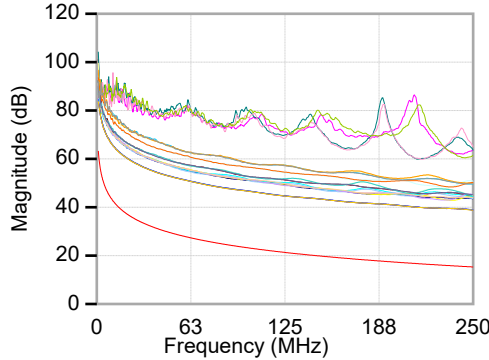
NEXT



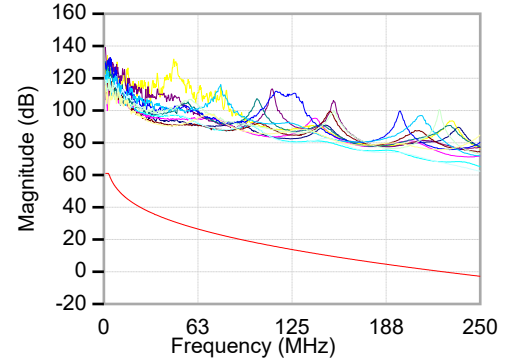
TCL



ACRF



ACRN



10BASE-T, 100BASE-T, 1000BASE-T, 2.5GBASE-T, 5GBASE-T (manufacturer should state AXT compliance)