

Technical Specification



Frequency Range(GHz)	18.0 - 43.5
Gain(dBi)	15 Typ.
Polarization	Dual Pol.
3dB Beamwidth(deg)	E Plane: 44 - 17
	H Plane: 53 - 25
Cross Pol. Isolation(dB)	30 Typ. ; 20 Min.
Port to Port Isolation(dB)	30 Typ. ; 20 Min.
VSWR	2.0:1 Typ.
	3.0:1 Max.
Connector	2.4mm-Female
Power Handling(W CW)	10 Max.
Material	Cu
Size(mm)	36.2 x 36.2 x 61.5
Net Weight(Kg)	0.25 Around

PATENT ID (US)

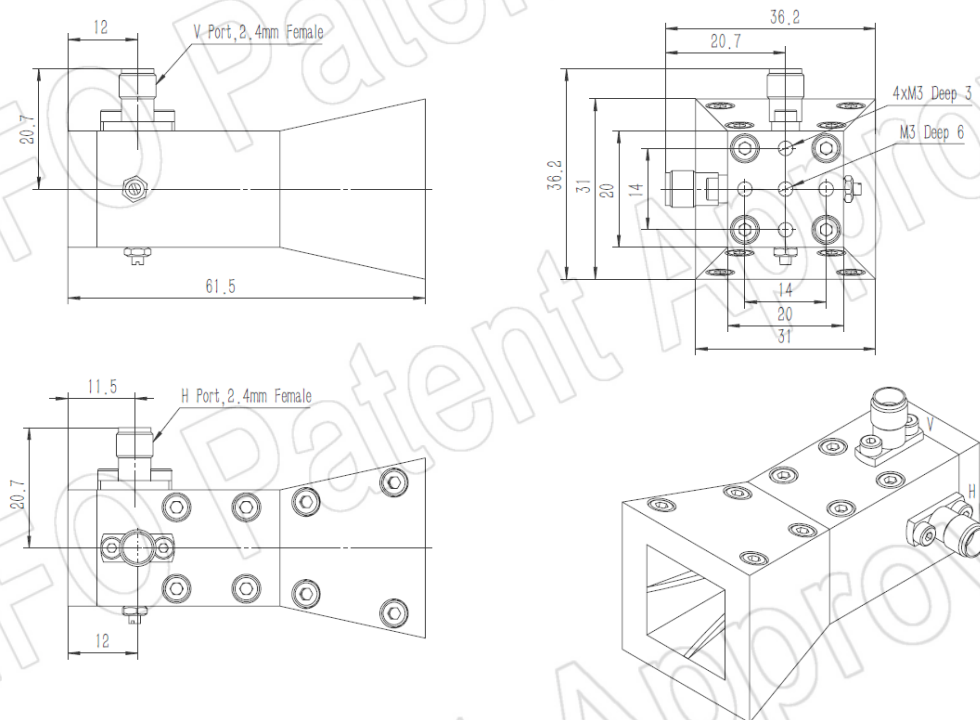
US D869447S

PATENT ID (China)

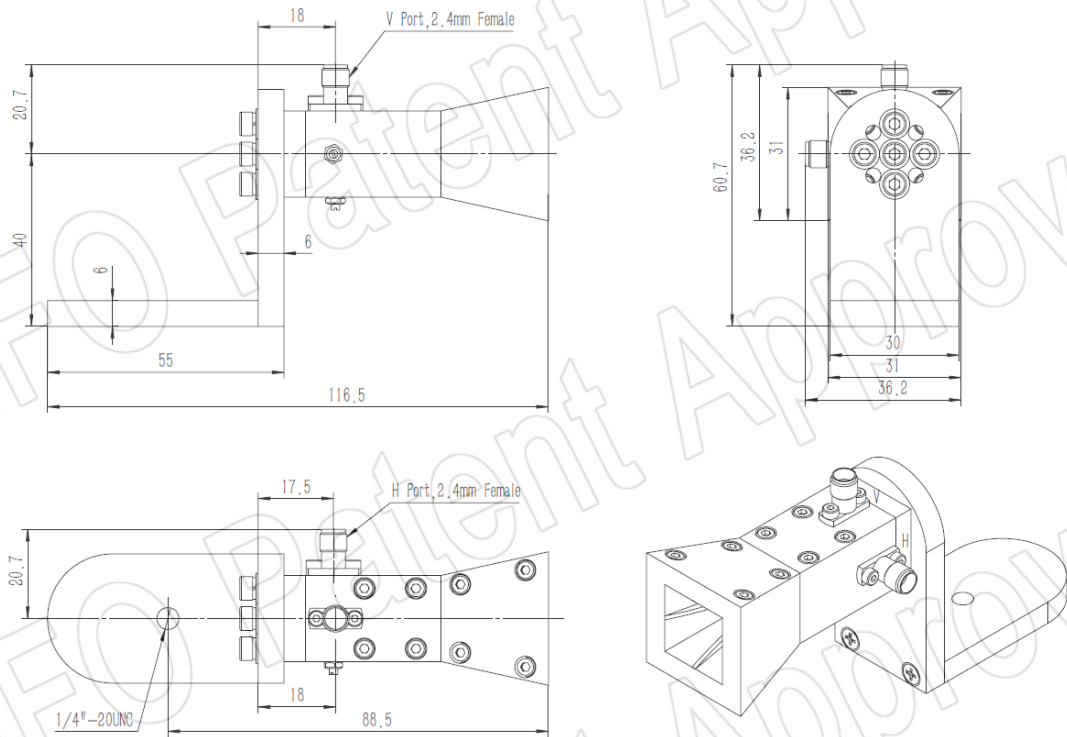
ZL202120347847.2, ZL201630454752.5

Outline Drawing (Size: mm)

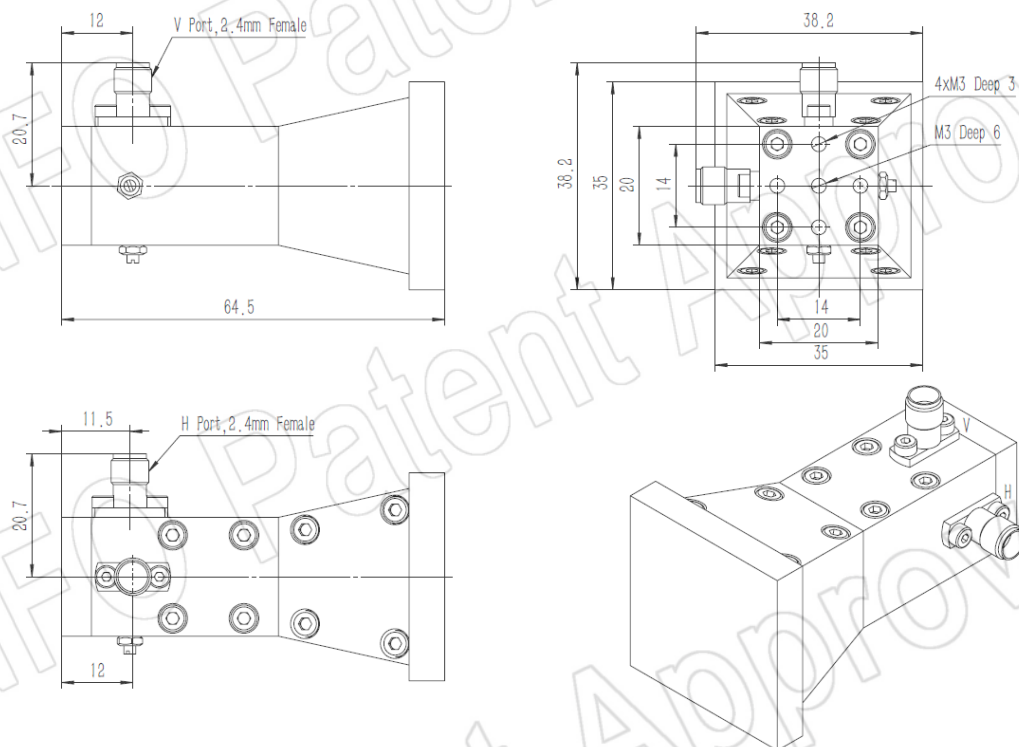
2.4mm-Female Output (P/N: LB-SJ-180435-2.4F)



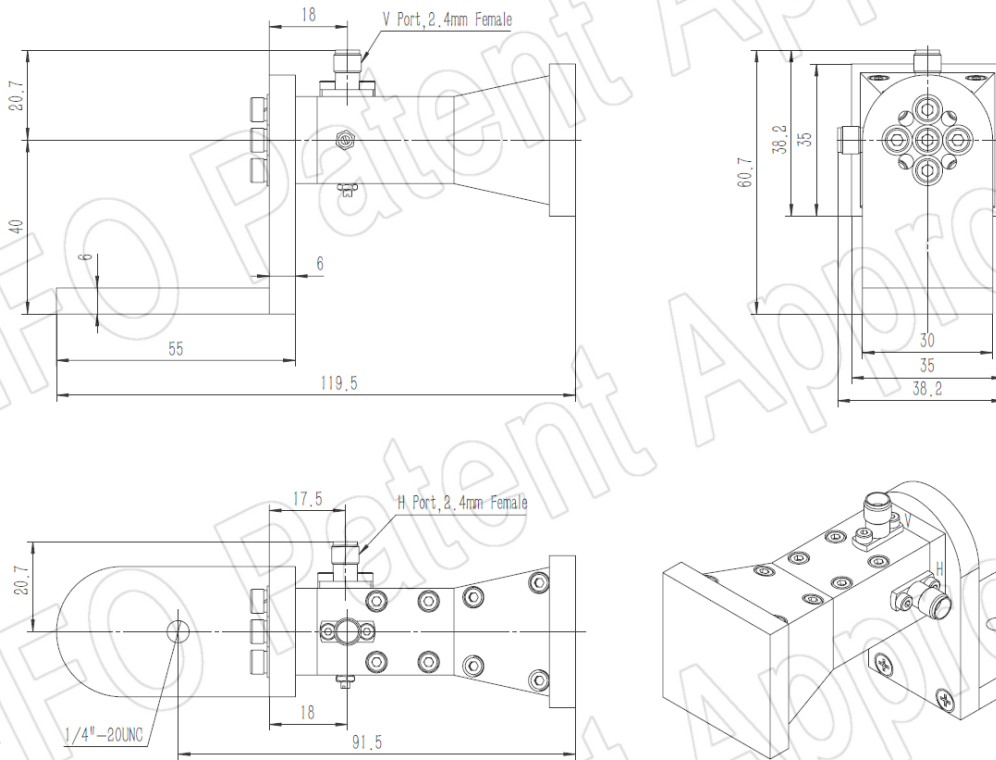
2.4mm-Female Output with L Type Mounting Bracket (Option, P/N: LB-SJ-180400-L)



2.4mm-Female Output with Radome (Option, P/N: LB-SJ-180435-2.4FSPO, Application Outdoor)

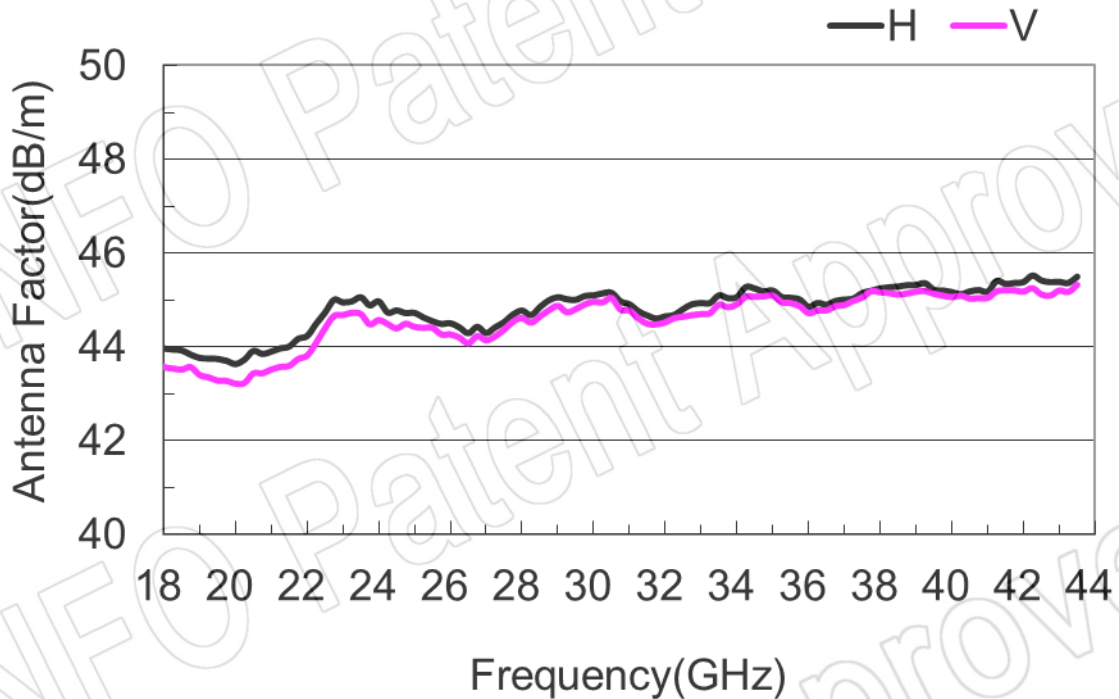
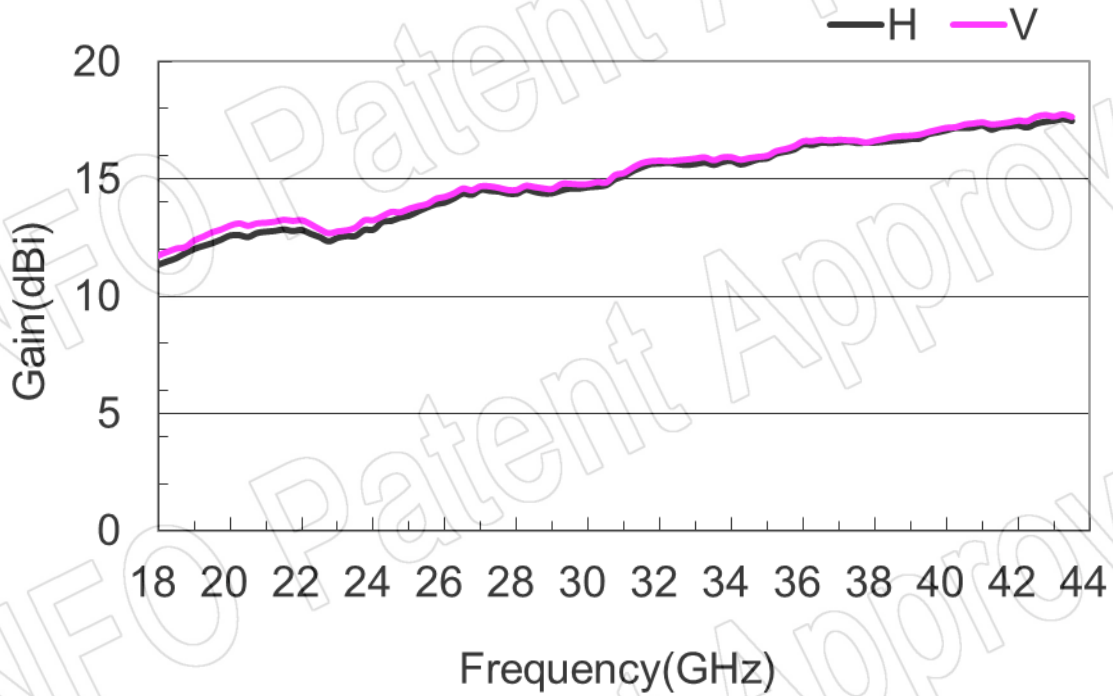


2.4mm-Female Output with L Type Mounting Bracket & Radome (Option, P/N: LB-SJ-180400-L & LB-SJ-180435-2.4FSPO, Application Outdoor)

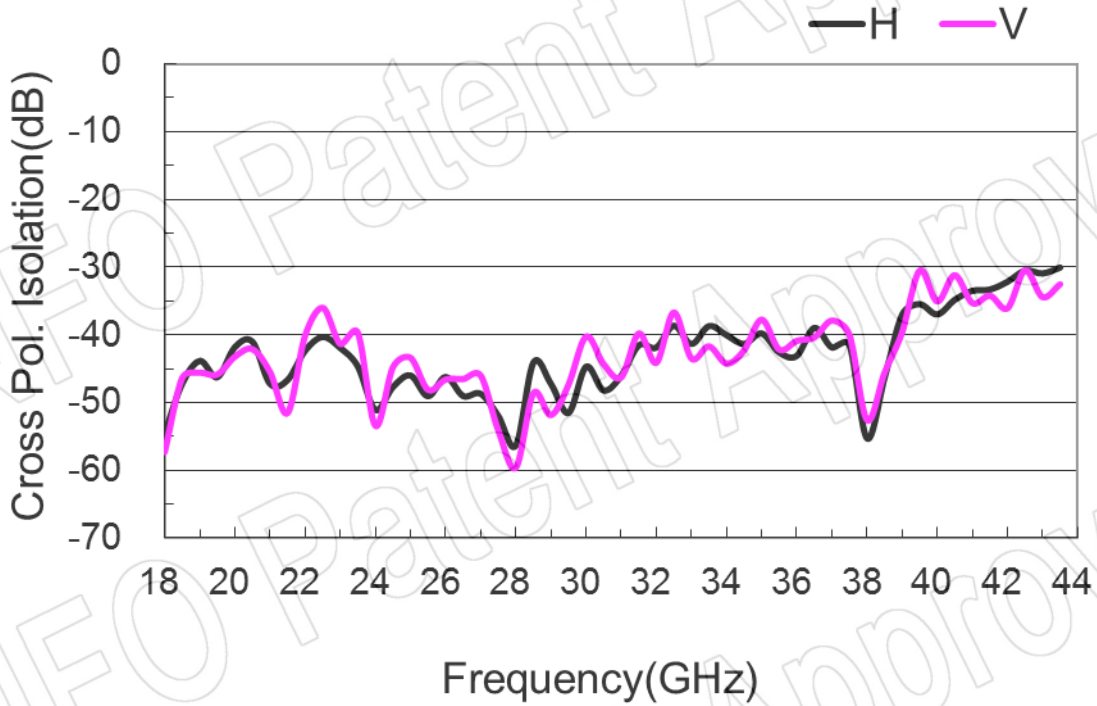


Test Results

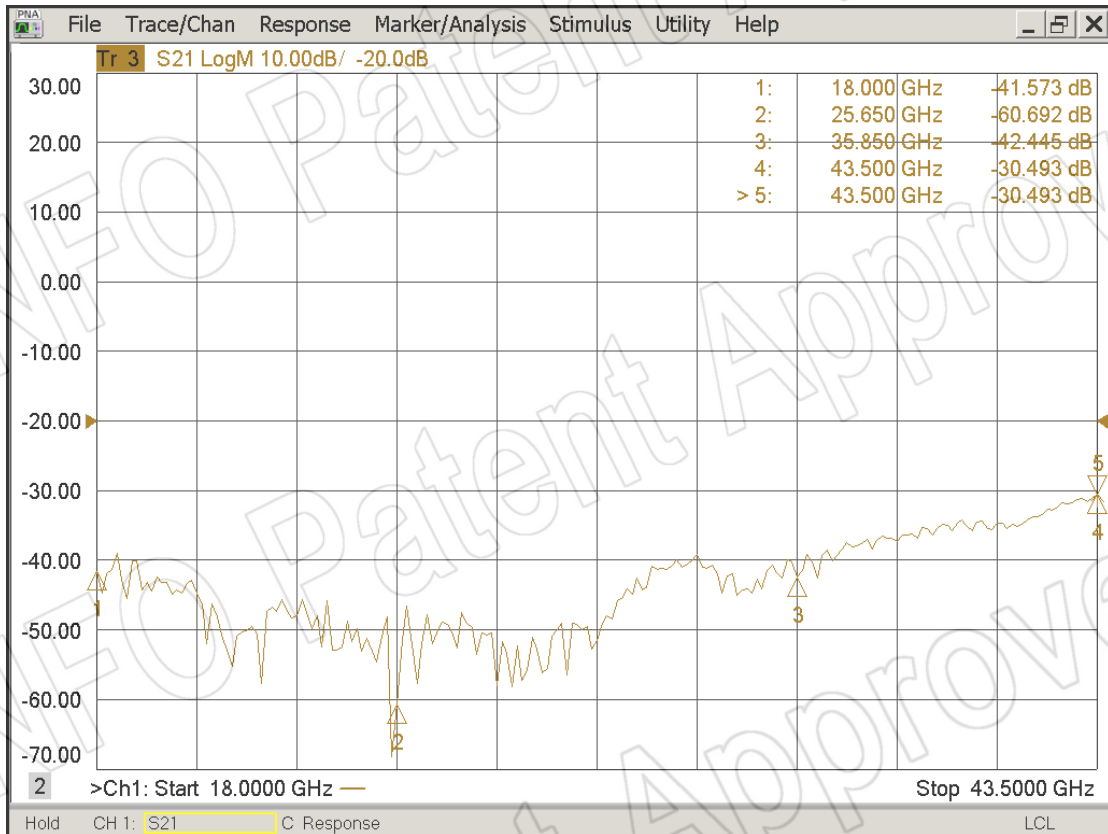
1. Gain & Antenna Factor



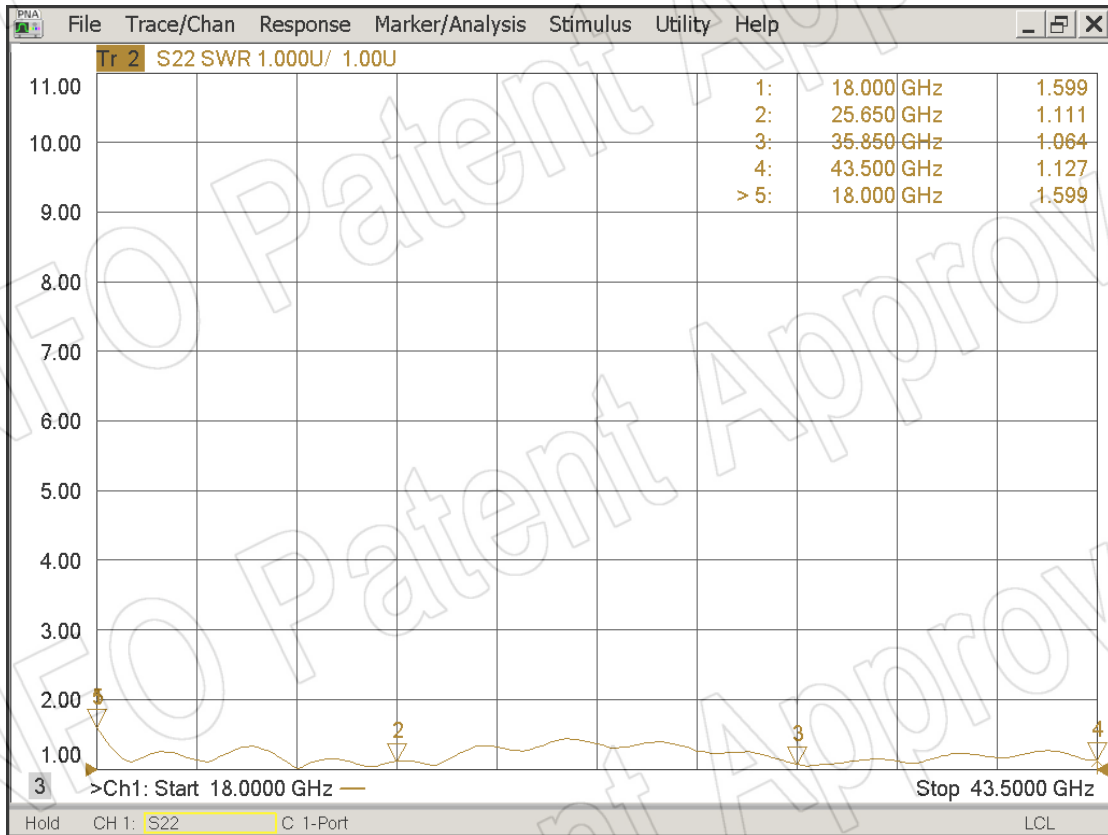
2. Cross Polarization Isolation



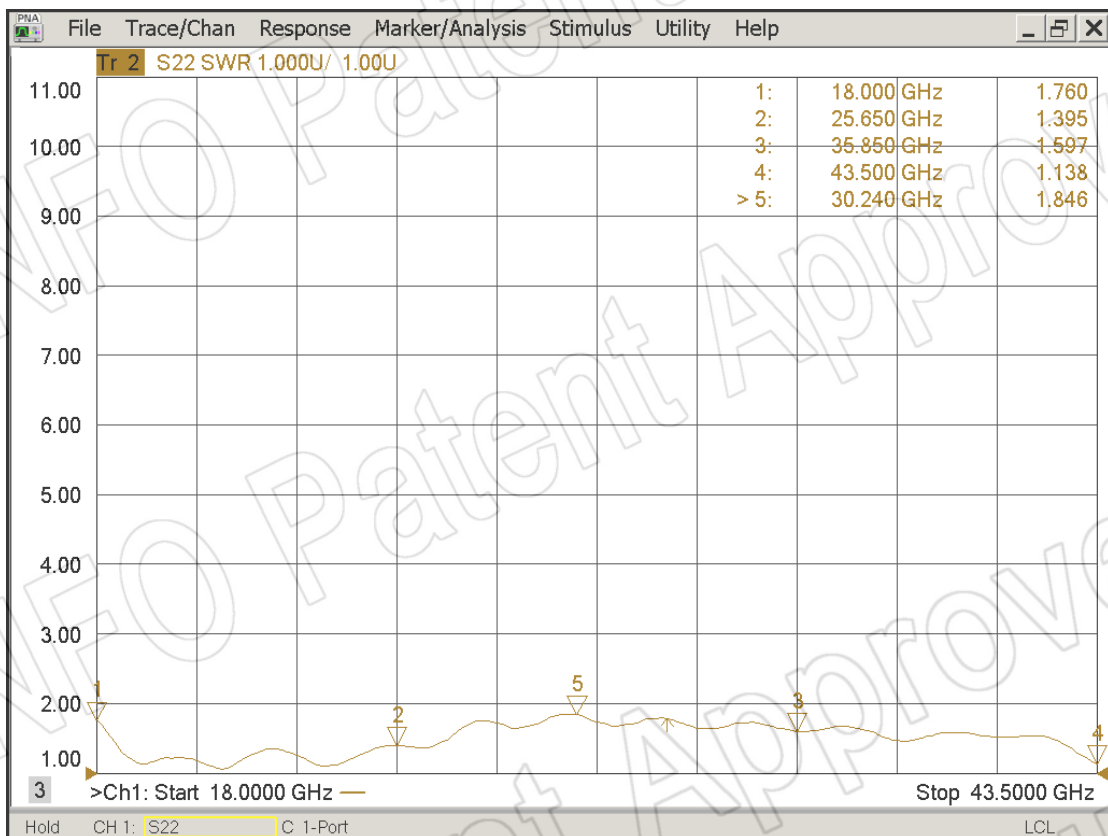
3. Port to Port Isolation



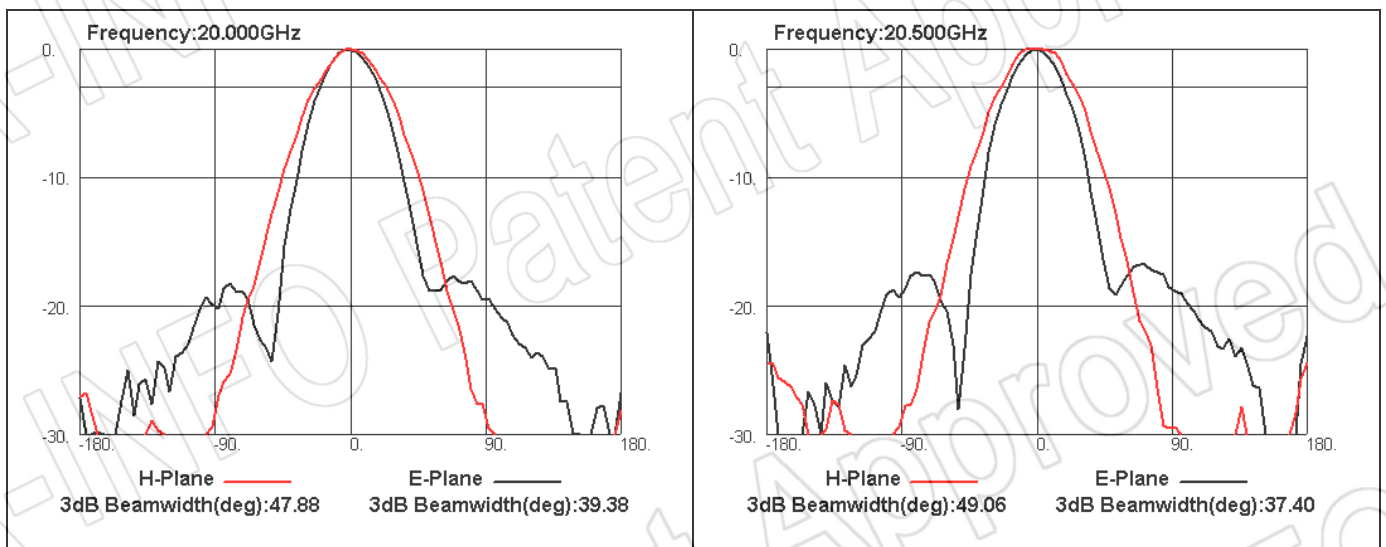
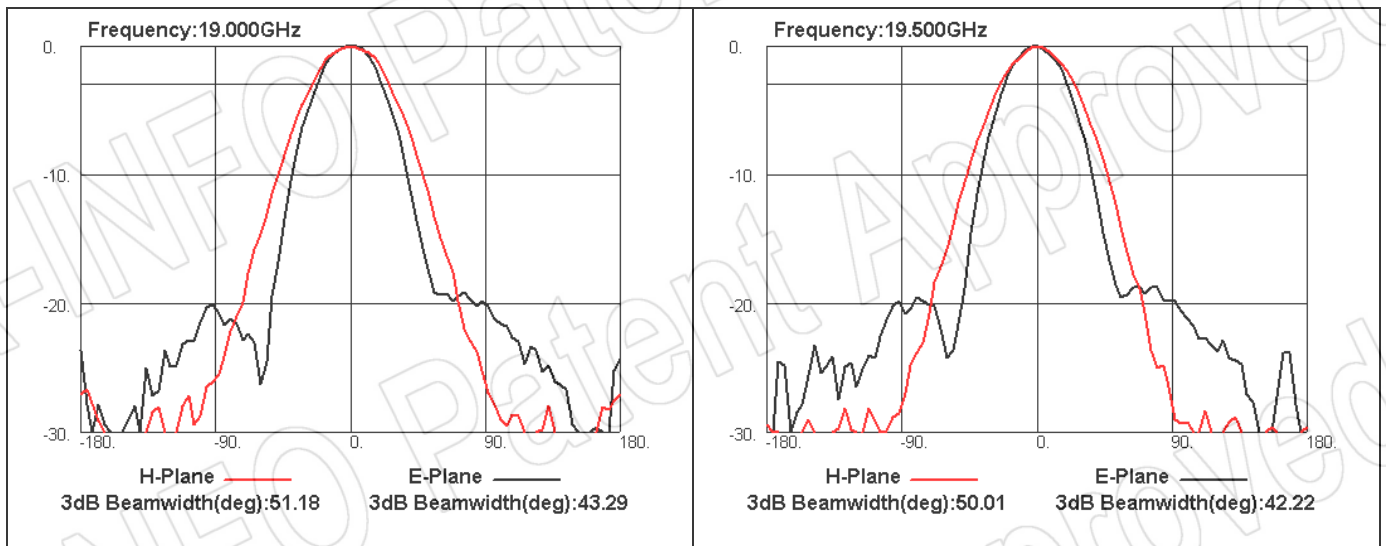
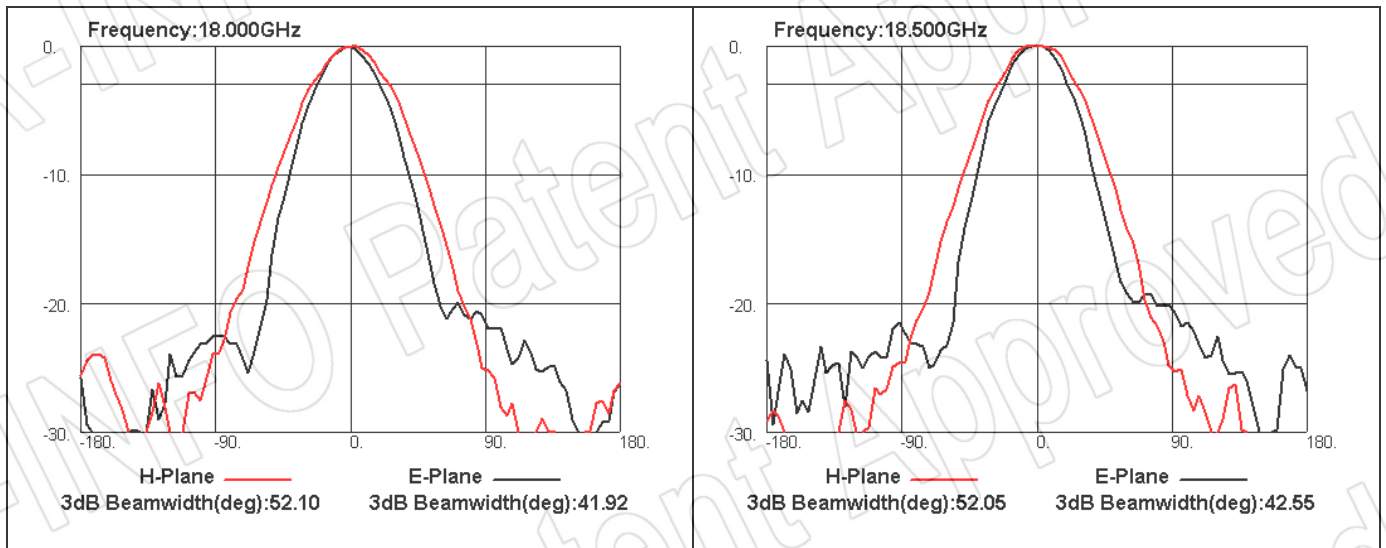
4. VSWR Port-H

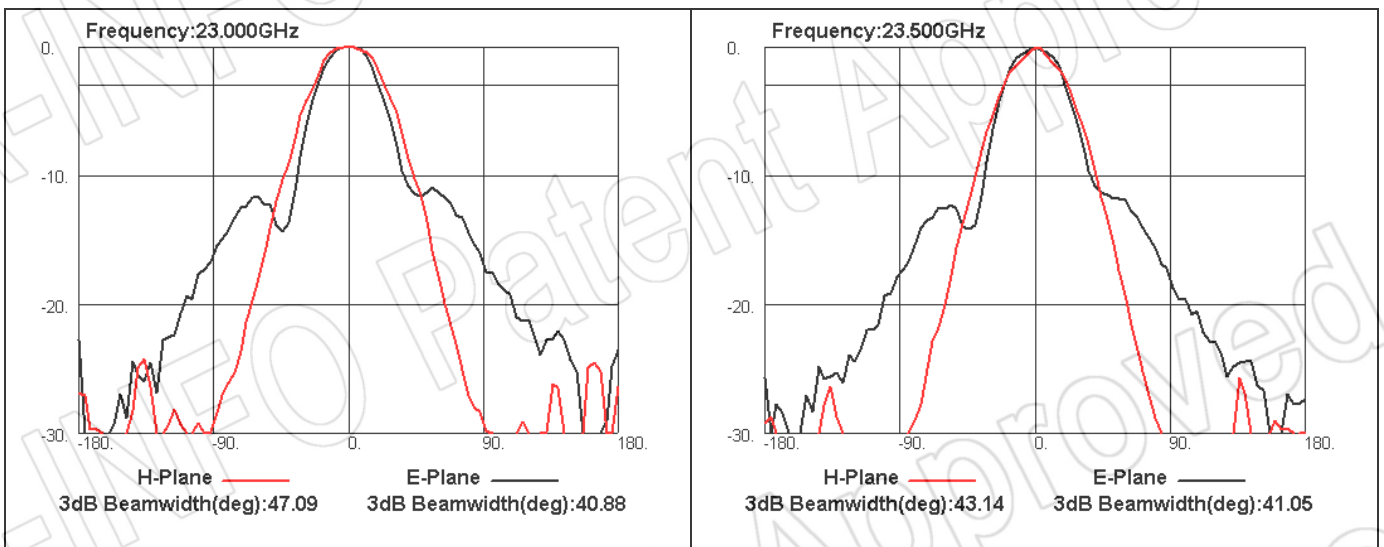
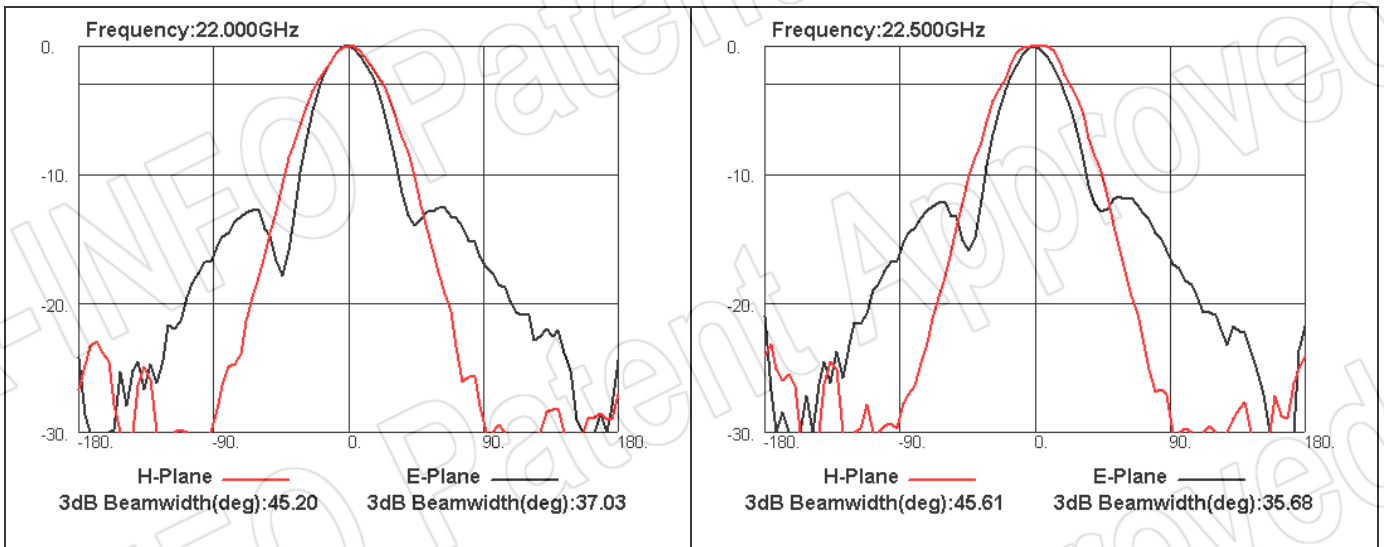
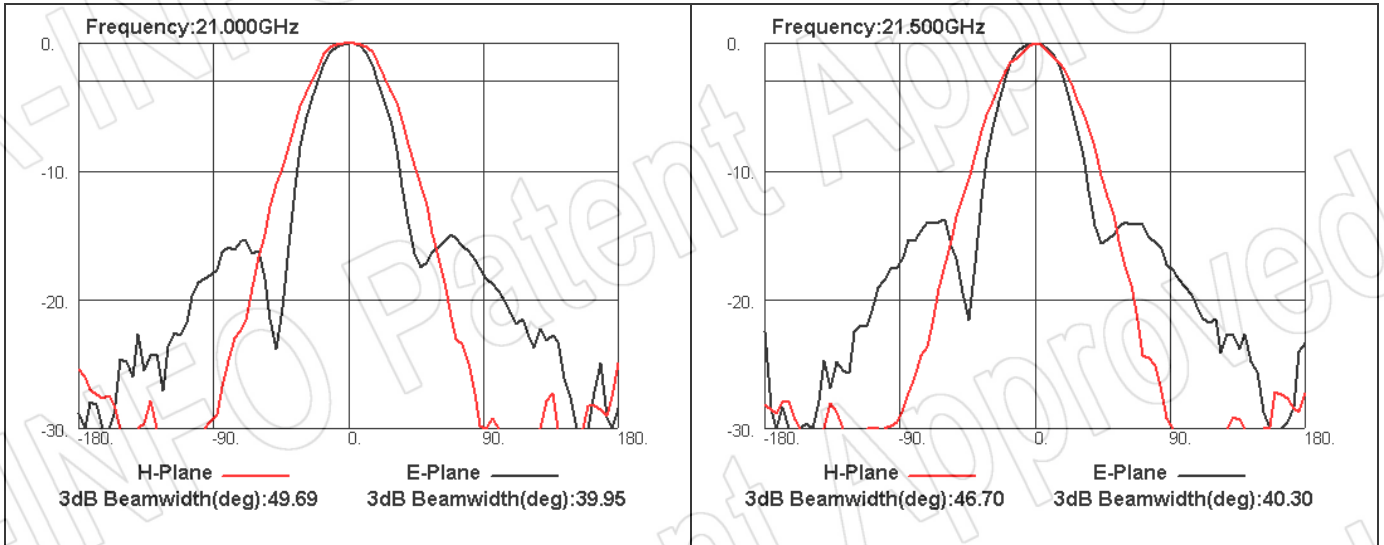


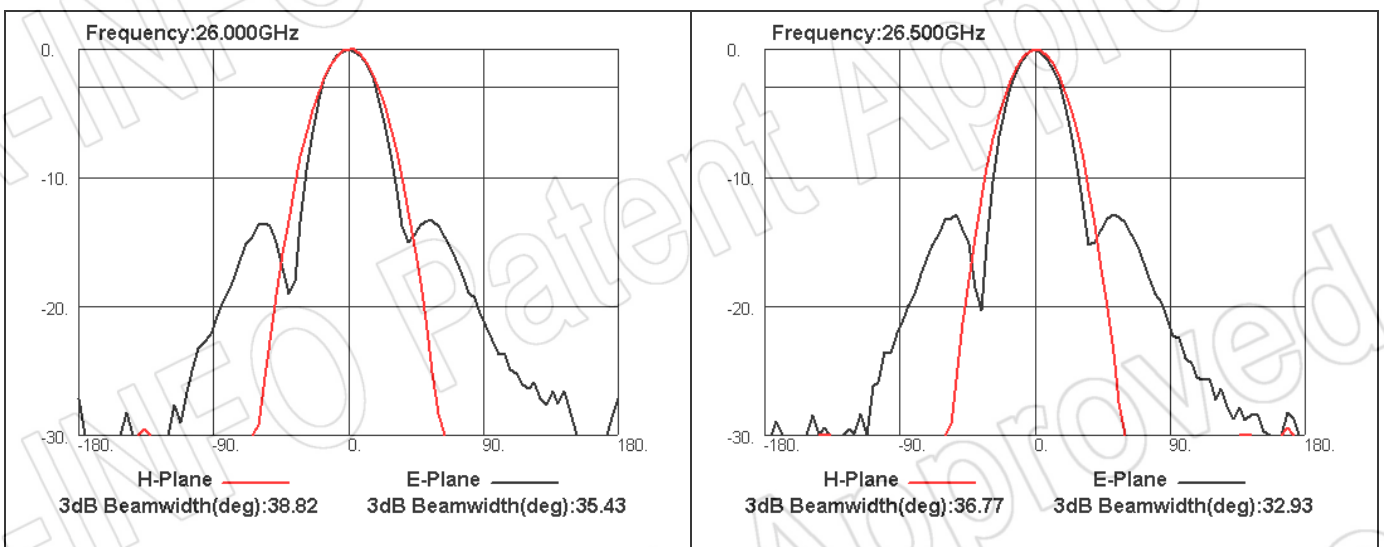
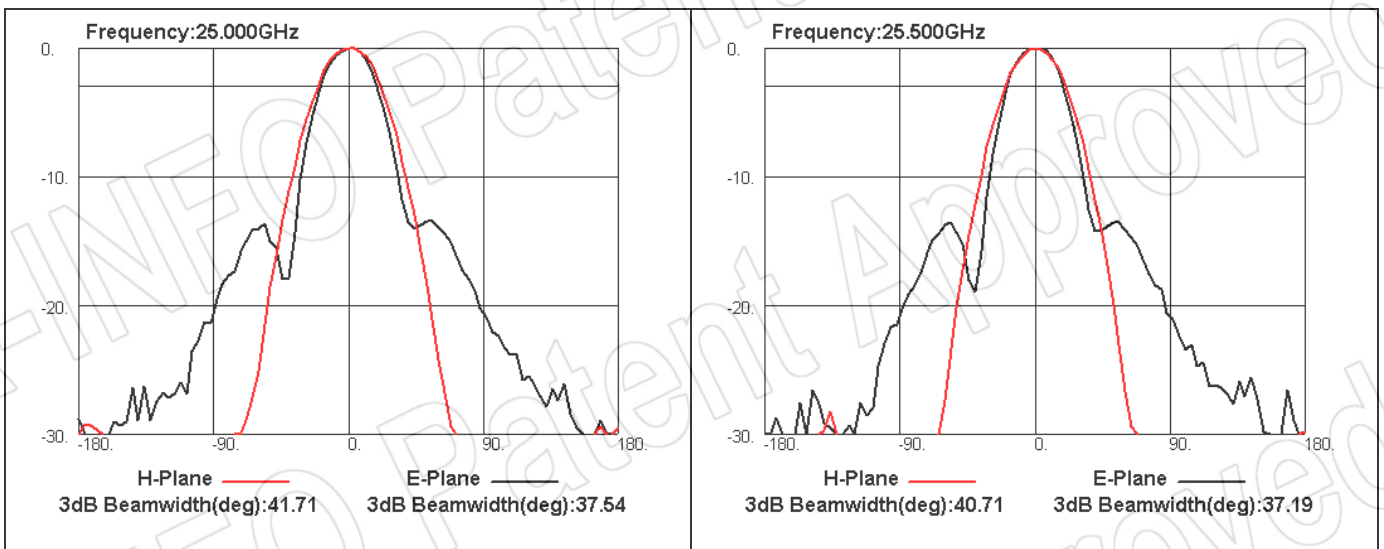
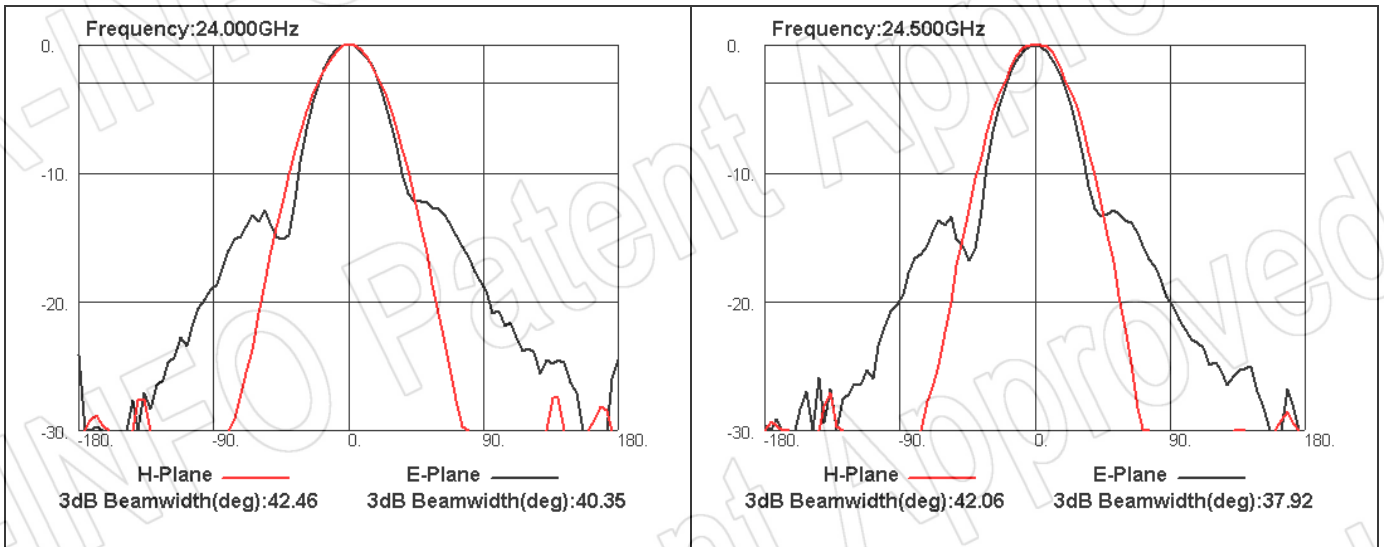
Port-V

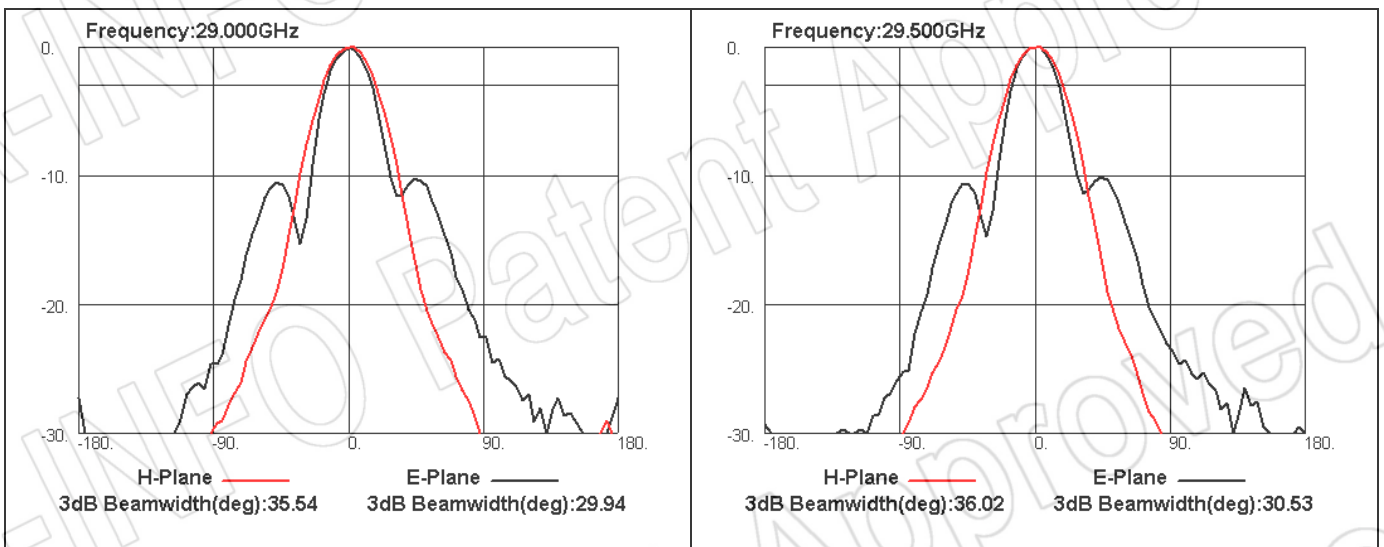
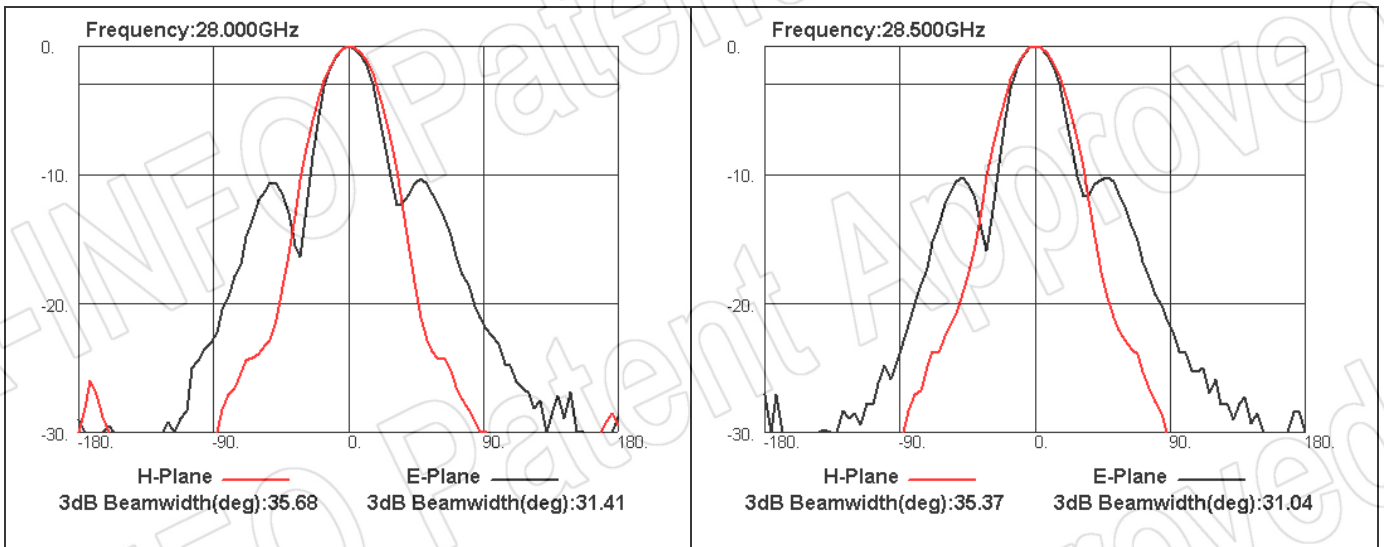
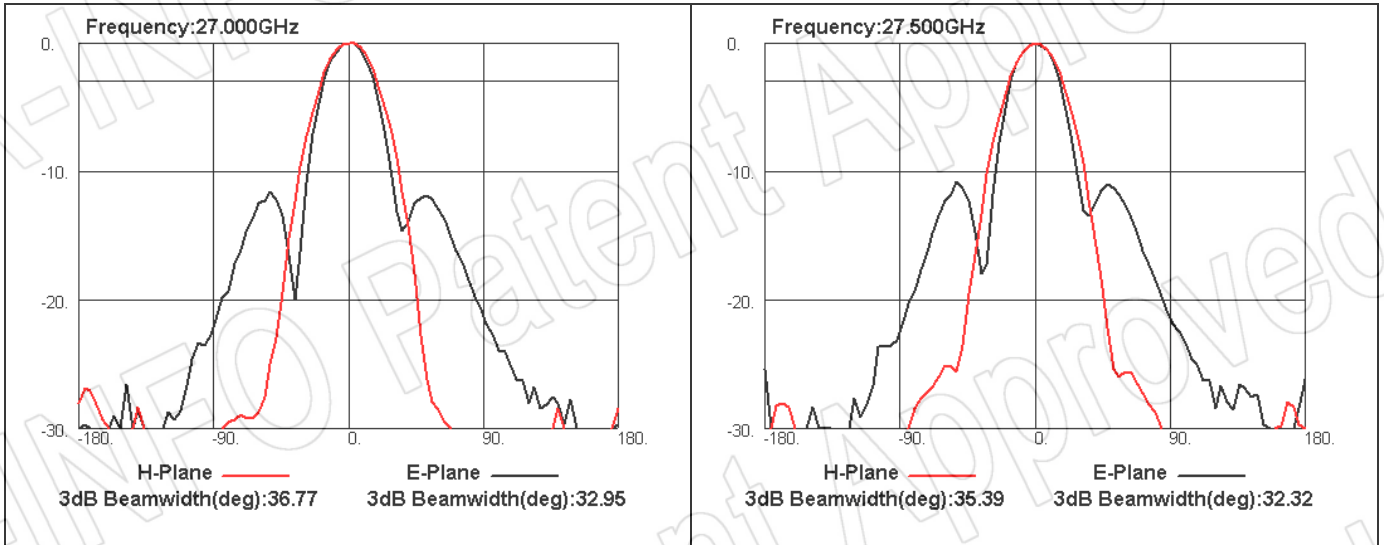


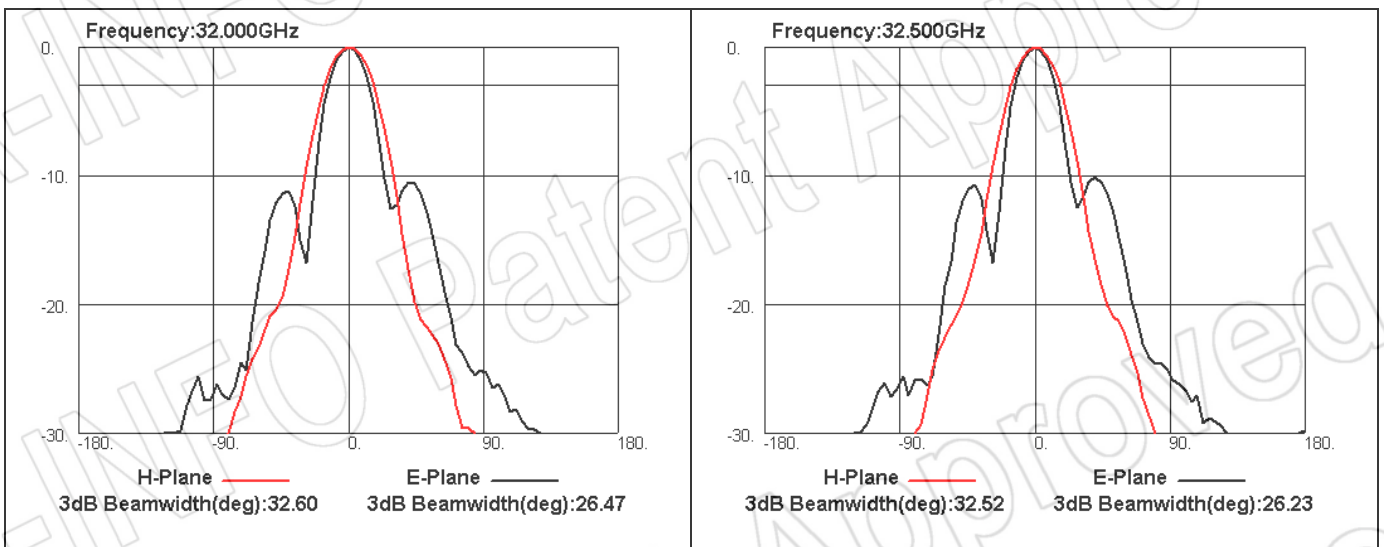
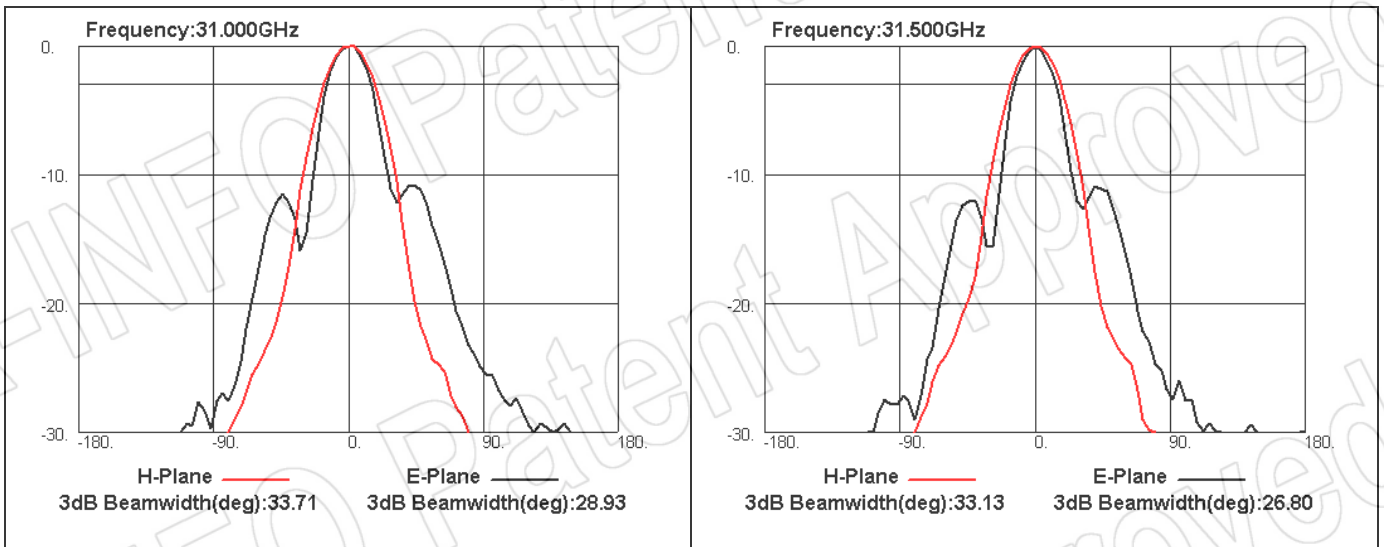
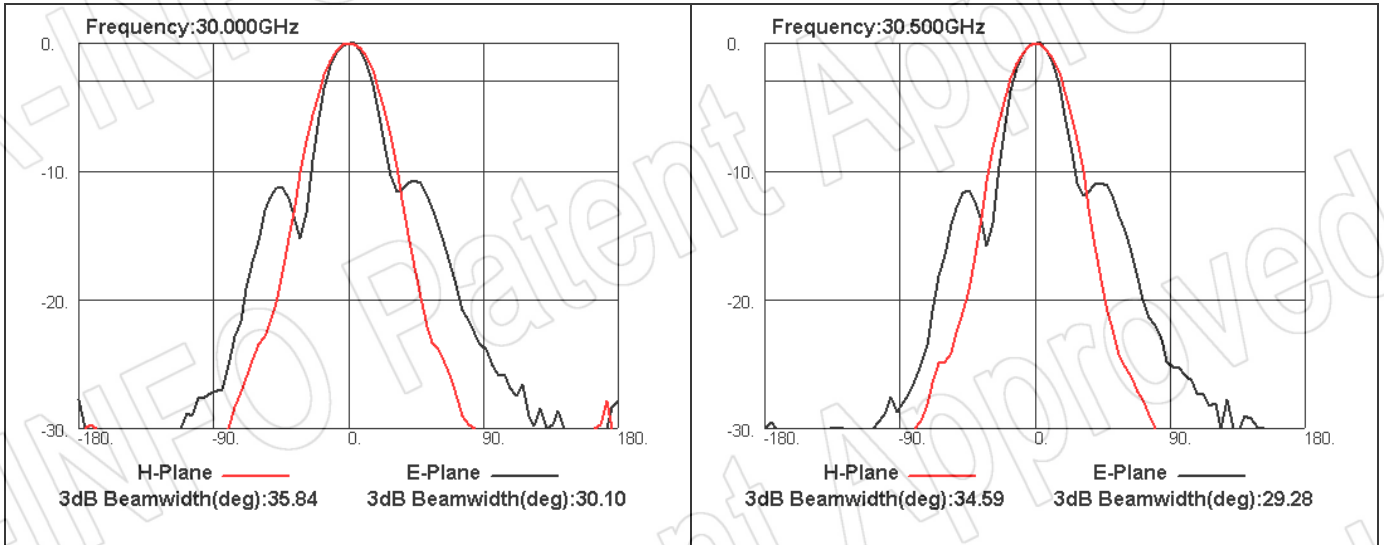
5. Pattern

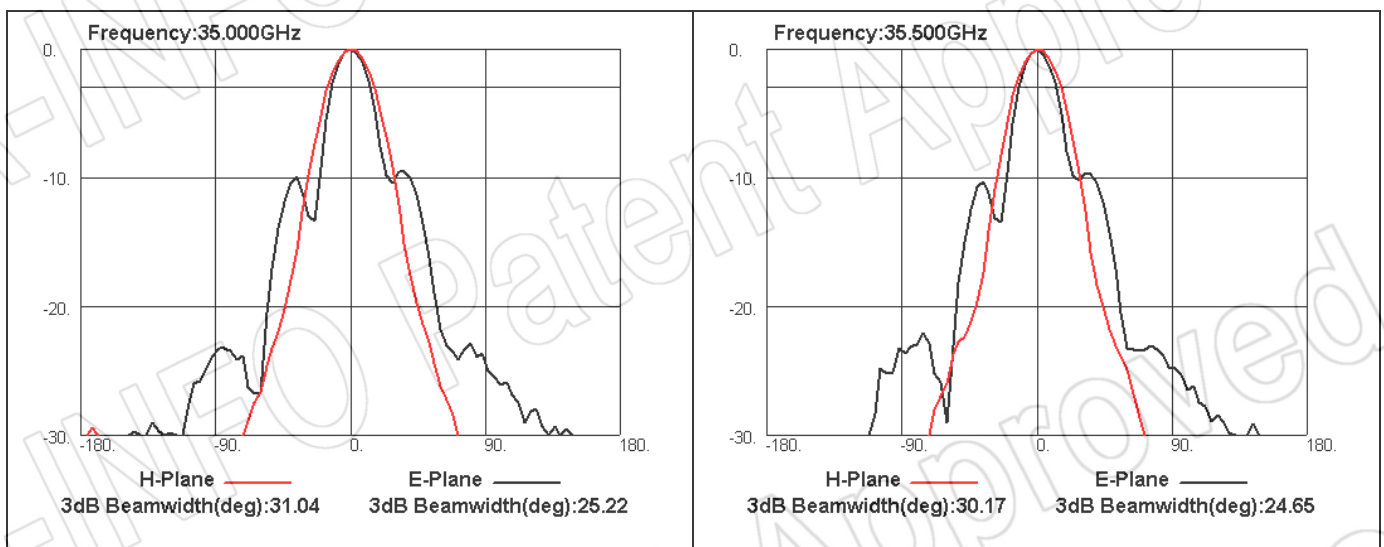
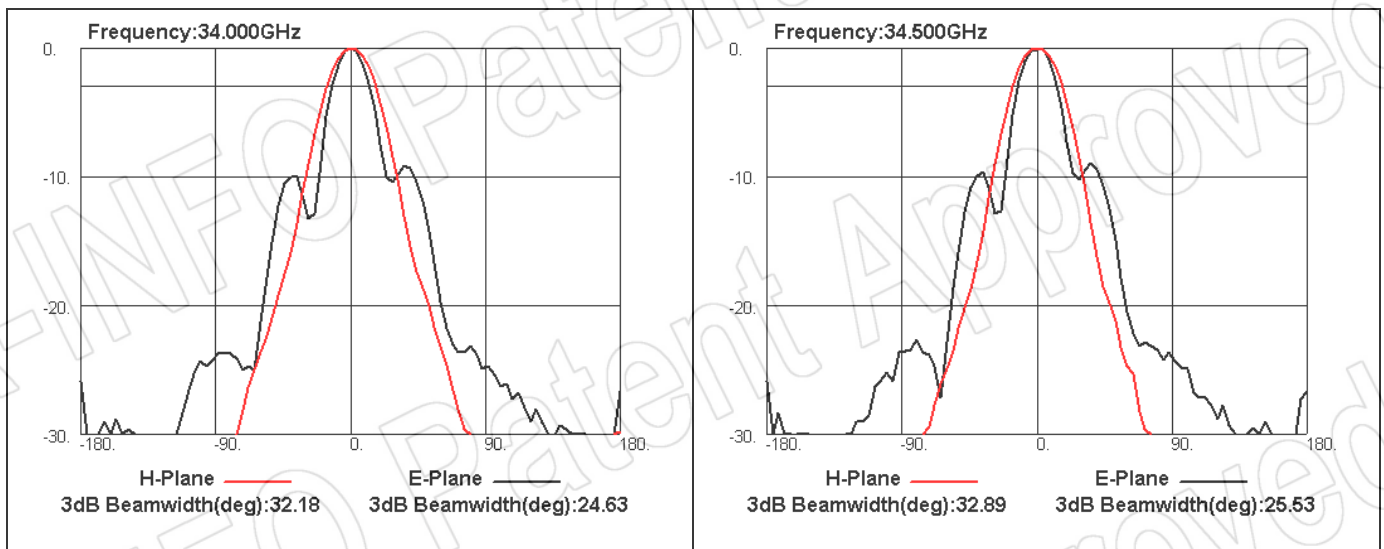
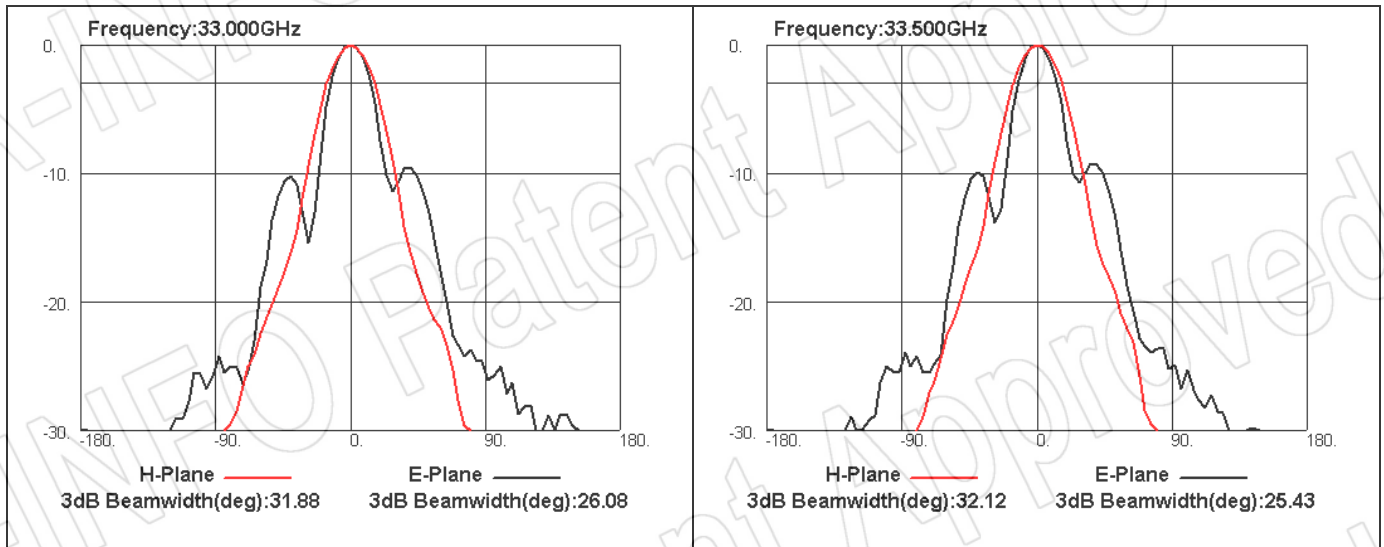


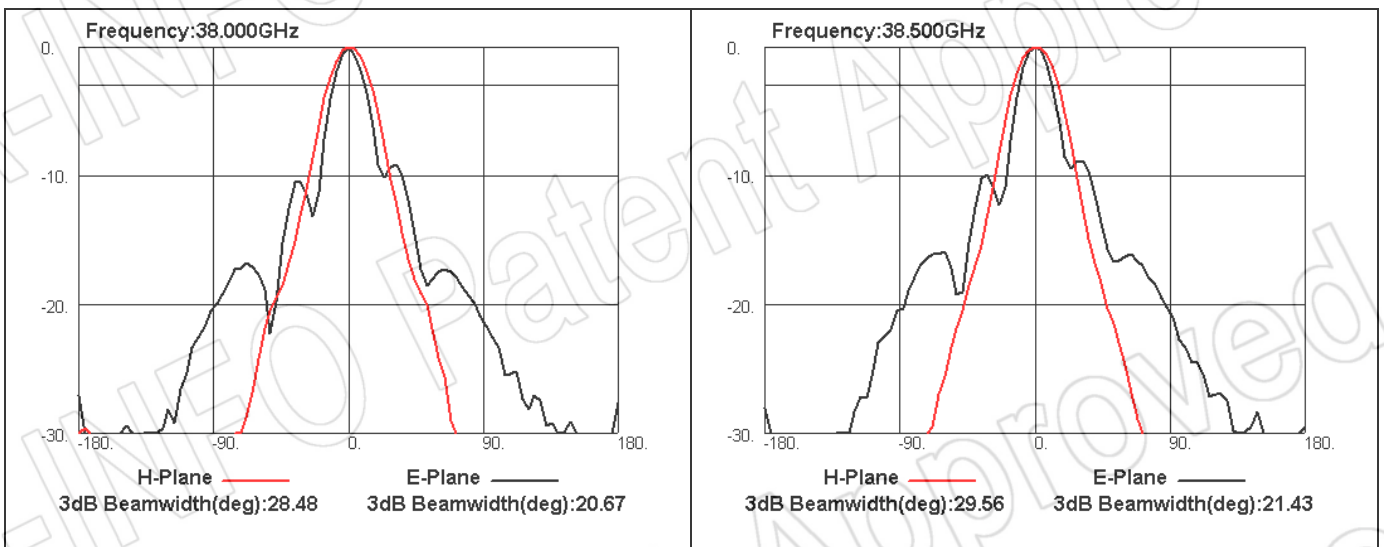
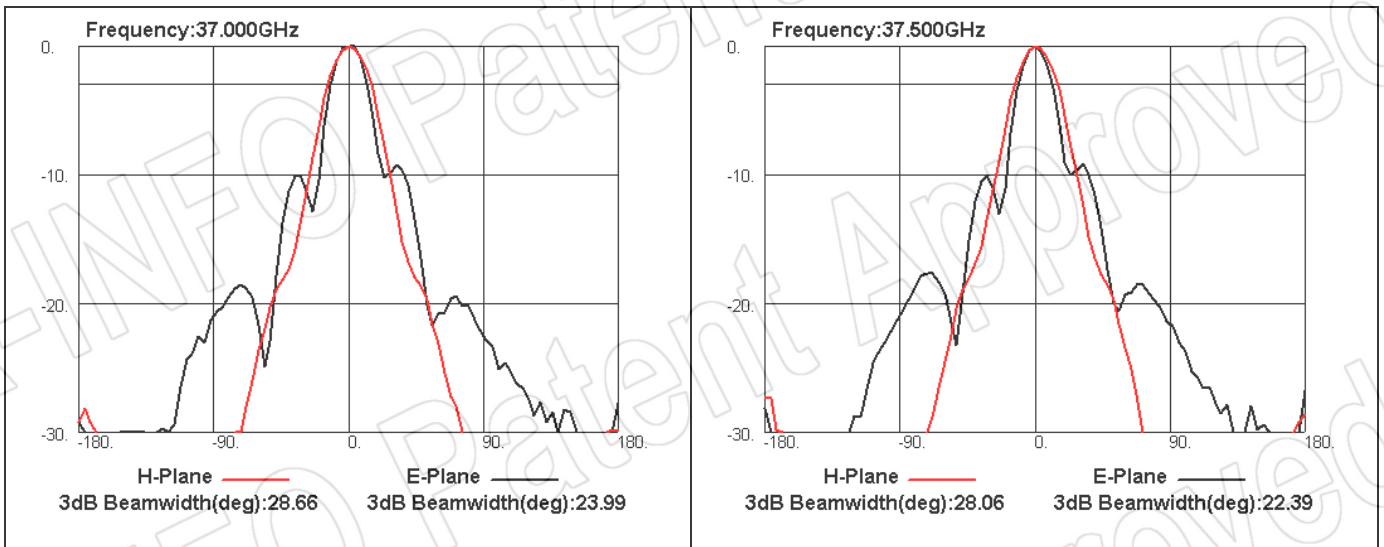
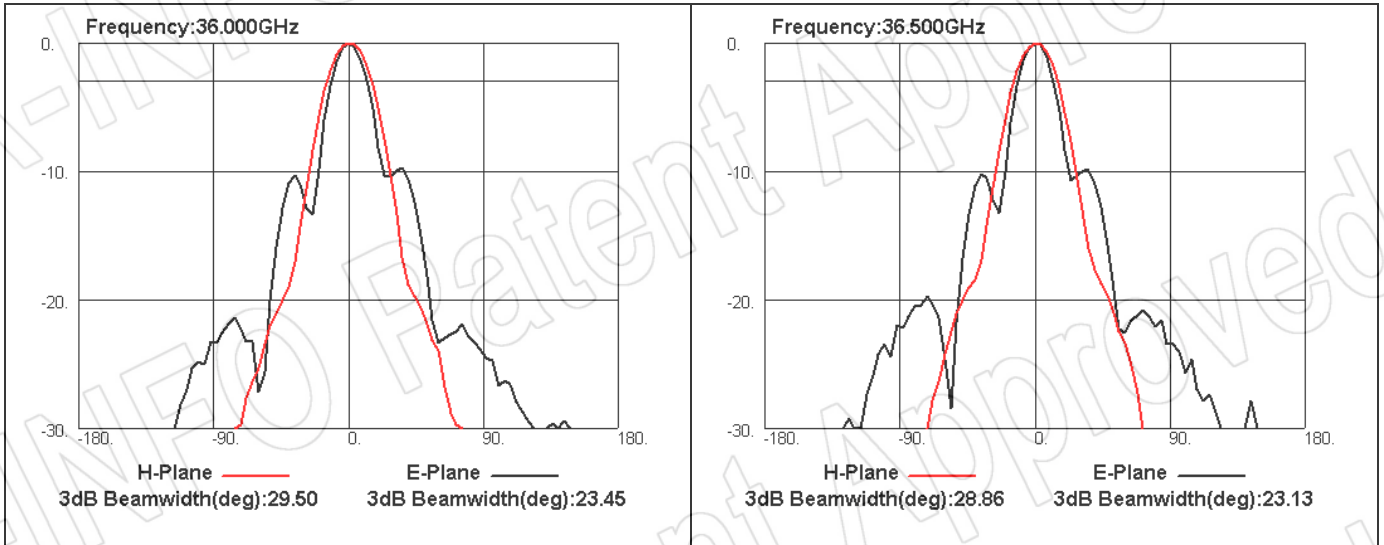


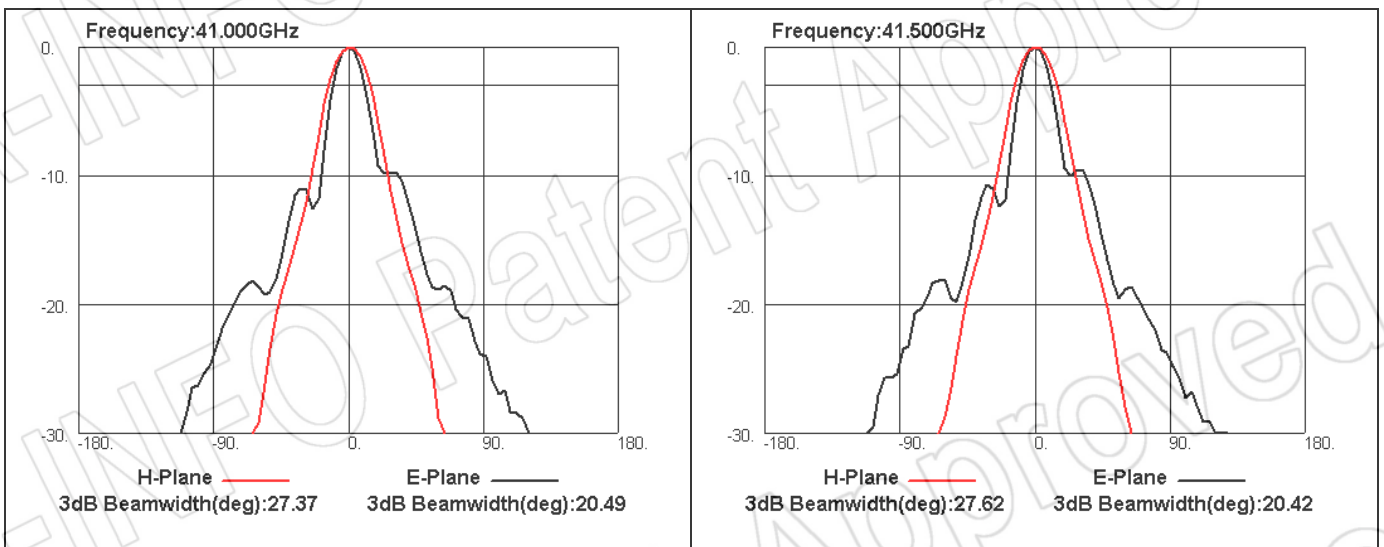
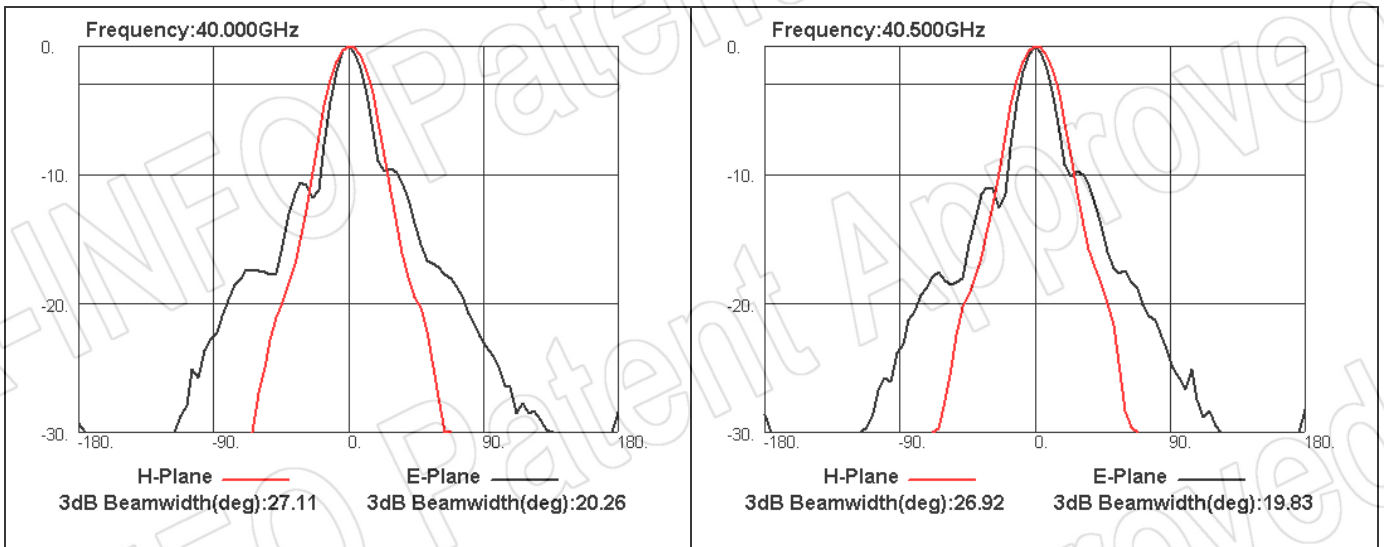
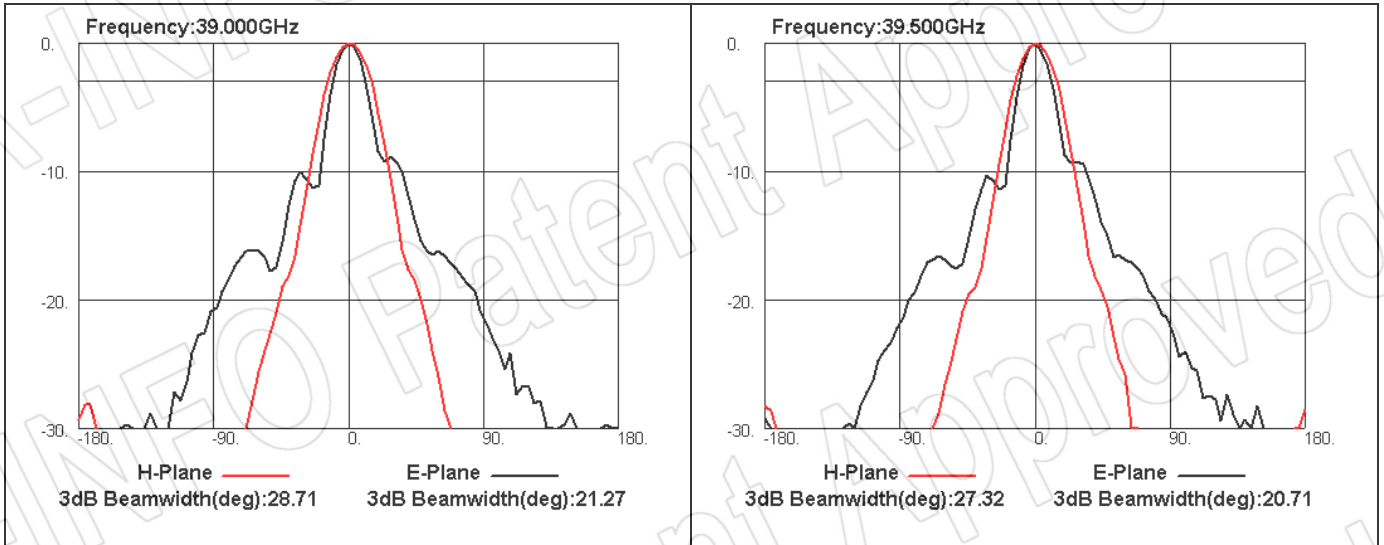


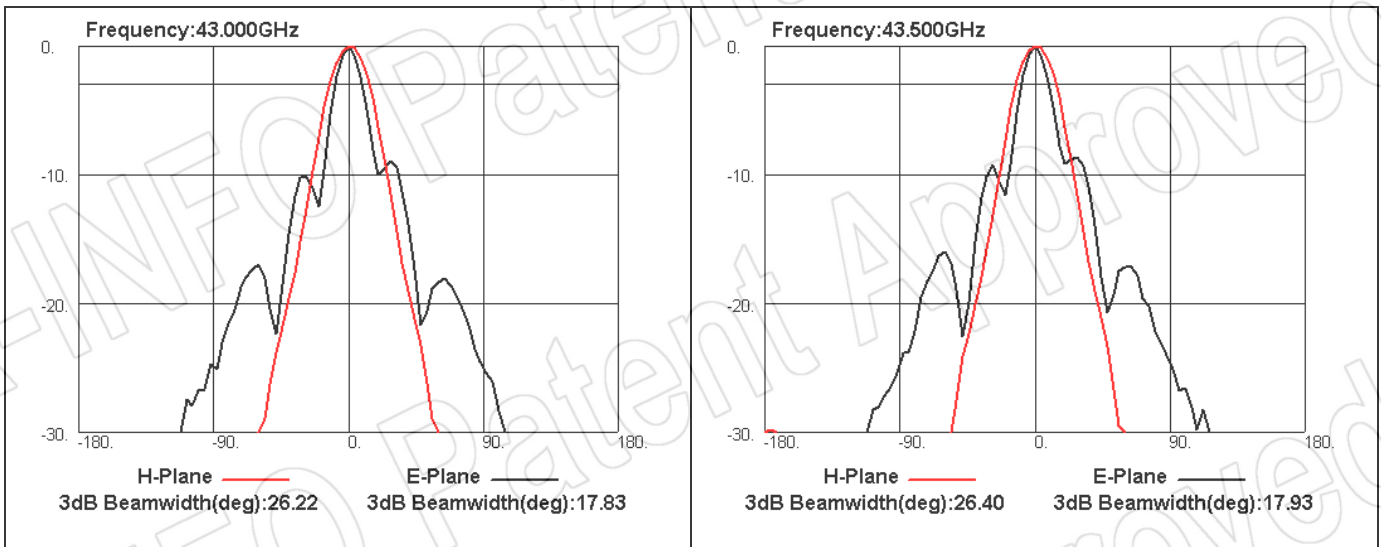
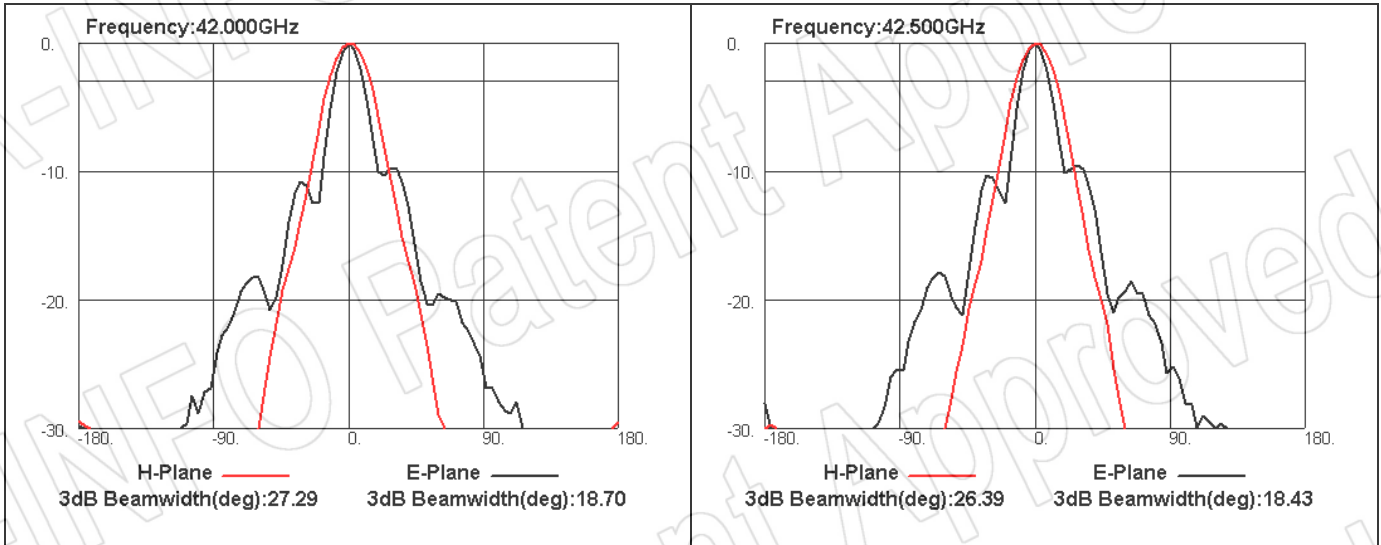












TelecomTest Solutions

U11, 477 Warrigal Road
 Moorabbin VIC 3189 - Australia
 Tel: 03 8618 6922 Fax: 03 8618 6923
 E-mail: info@telecomtest.com.au

distributed by



TELECOMTEST SOLUTIONS
www.telecomtest.com.au