

# RTU-320

## Dual 10G Test Module



## for RTU-300

### Remote Test Platform

The RTU-320 hardware option for the RTU-300 standalone platform offers full-featured centralized test solutions for Ethernet, OTN, SONET/SDH, PDH/DSn, Fibre Channel and CPRI/OBSAI. These factory-installed hardware options allow flexibility to fit any application, such as the addition of a second RTU-320 or 100G (RTU-600) to be installed concurrently in the same test platform.



## Key Platform & Software Features

- Optimized for centralized testing
- Up to two factory-installed test module support with up to four dedicated test ports
- Rugged 1U. 19" rack mount profile and construction
- Ideal platform for testing at the different service life cycles: Provisioning, Activation and Service Assurance.
- Connectivity via 10/100Base-T management interface
- DC 15V and -48V powering options
- Web browser and VNC access in standalone operation
- Supports independent and simultaneous measurements

## Ethernet Key Highlights

### OTN/SDH/SONET/PDH/DSn

- Advanced flexible OTN, SDH/SONET, PDH/DSn test payload map/mux, including EoOTN support (ODU0 and ODUflex)
- Overhead Monitoring and byte decoding
- Automatic Protection Switching and Service Disruption
- Round Trip Delay on all interfaces and payload mappings
- Tandem Connection Monitoring
- Jitter and Wander (E1, E3, DS1, DS3, STM-10, OC-3)
- Non-intrusive Pulse Mask Analysis at E1, E3 and DS1, DS3 rates

### Fibre Channel

- Storage Area Networks (SAN) testing
- BERT and Throughput test
- RFC2544: Throughput, latency, frame loss, back to back tests
- Layer 1 and layer 2 loopbacks

### Ethernet

- RFC2544 Throughput, latency, frame loss and back to back tests
- V-SAM test suite compliant with ITU-T Y.1564 standard
- IEEE 802.3ah, ITU-T Y.1731, IEEE 802.1ag, MPLS-TP OAM support
- Q in Q (VLAN stacking), MPLS, MPLS-TP, PBB support
- RFC6349 V-PERF TCP test suite
- Layer 2 Control Protocol Transparency test
- In-service monitoring with frames capture and on-screen protocol decode
- Fully integrated solution for synchronized packet networks
- Supports IEEE 1588v2/PTP and SyncE/ITU-T G.8261 standards
- Master Clock and Slave clock emulation
- IEEE 1588v2/PTP protocol monitor & decode, and PDV analysis
- Wander measurement and MTIE/TDEV analysis
- ESMC SSM generation, monitoring, and decoding

### CPRI/OBSAI Testing

- Common Public Radio Interface standard (CPRI): Unframed, Layer 1 Framed and Layer 2 tests (REC/BBU and RE/RRH emulation)
- Open Base Station Architecture Initiative (OBSAI): Unframed tests
- BER testing with PRBS stress patterns

<sup>1</sup>Balanced ports available in RJ48 or Bantam

<sup>2</sup>2nd port used for monitoring

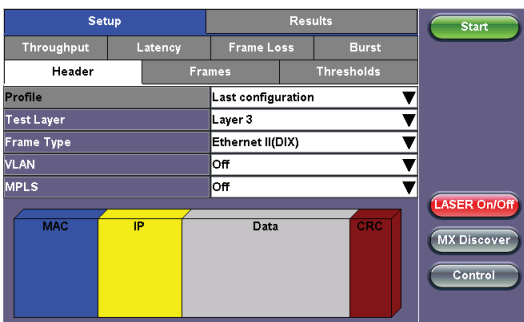
## Standalone Centralized Test Platform

## Ethernet Key Features

### RFC2544 Compliance Testing

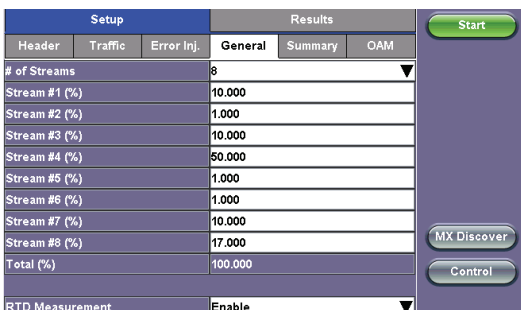
Performs the RFC2544 automated test suite at all recommended frame sizes as well as user configurable frame sizes and up to full line rate. The test suite can be performed with the far end test partner in loopback mode or peer-to-peer mode - the latter allowing for symmetrical/asymmetrical testing. Thresholds may be configured for accurate SLA assurance and verification. The automated tests supported are throughput, latency, frame loss, and back-to-back frames.

In Advanced SLA Mode this feature combines the powerful multiservice throughput test capabilities with the RFC2544 industry test suite for SLA verification. Using this test function, service providers are able to verify SLAs while end-to-end QoS is assessed properly. By configuring one primary test stream and up to seven background streams each with independent frame size, bandwidth, and more importantly QoS levels, simulating different service applications is now realized. The Advanced RFC2544 SLA mode provides detailed visibility of the test parameters for each of the traffic streams being measured, providing an efficient in-depth qualification in a fast and automated way.



### Multiple Streams Generation - Throughput

Up to ten traffic streams can be independently configured with CoS (VLAN priority) and QoS (TOS/DSCP) prioritization. This traffic feature simulates multiple service conditions (e.g. Triple Play), and facilitates end-to-end QoS performance verification. The multiple stream throughput tests may be performed with a second test unit at the far end in Smart Loop mode or Peer-to-Peer mode.



### BERT

Layer 1 unframed and framed, 2, 3, and Layer 4 BER testing are supported. The BER test can be configured to use regular PRBS test patterns, or user defined test patterns to simulate various conditions.

### Protocol Support

With intuitive graphical based user interface, users can fully customize test traffic at the Layer 2 (MAC header), Layer 3 (IPv4 and IPv6 headers) and Layer 4 (TCP,UDP ). The test set also offers a complete tool set of advanced network protocols.

### Q-in-Q (VLAN stacking)

VLAN stacking, also known as Q-in-Q, makes a provision for carrier/service provider assigned VLANs (SP-VLAN), but also retains customer traffic's VLAN (CE-VLAN). Up to three layers of VLAN tagging supported with configurable VLAN ID, Priority, and VLAN type.

### Multiprotocol Label Switching (MPLS)

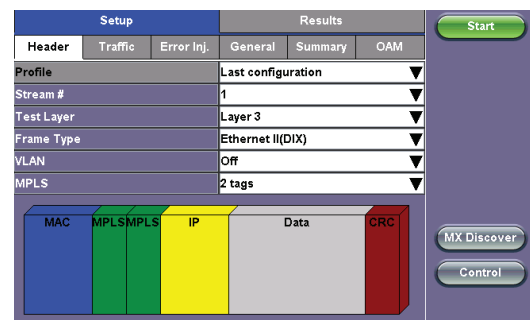
MPLS technology allows for a more efficient routing of Ethernet/IP packets via the use of MPLS routers in the network. MPLS labels reside between the MAC (Layer 2) and IP layers (Layer 3). Up to three MPLS tags can be configured in the traffic stream with customizable Label, CoS, and TTL fields.

### Provider Backbone Bridging (PBB)

Also known as MAC-in-MAC, PBB (802.1ah) provides a trunking mechanism that adds resiliency and configurable performance levels in the provider backbone network. PBB encapsulation is available for all Ethernet tests with all PBB fields configurable.

### Multiprotocol Label Switching Transport Profile (MPLS-TP)

MPLS-TP, a Layer 2 packet-based transport mechanism, is gaining momentum as a transport of choice for access and aggregation networks requiring a technology that combines the operational simplicity of packet switched networks with the operations, administration and maintenance (OAM) tools and fault resiliency capabilities of circuit switched networks. Fully configurable MPLS-TP header fields including LSP and Pseudowire.

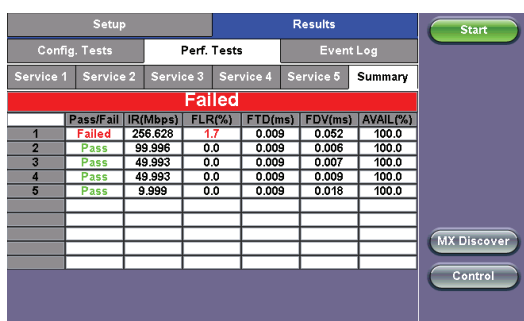
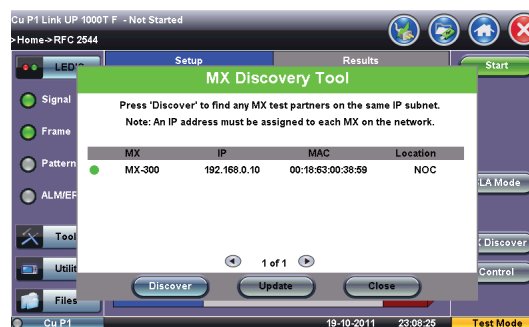
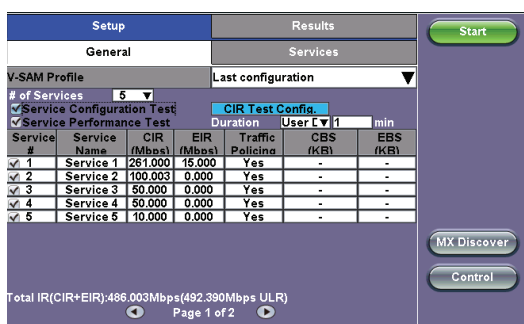


### Y.1564 V-SAM Test

VeEX's V-SAM test suite is fully compliant with ITU-T Y.1564 and offers an efficient method to qualify and troubleshoot Ethernet Services. V-SAM addresses some of RCF2544 limitations by testing multiple services at once and providing simultaneous measurements of key SLA parameters.

With the Service Configuration test, services running on the same line are tested one by one to verify the correct service profile provisioning. With the Service Performance test, the services running on the same line are tested simultaneously over an extended period of time, to verify network robustness.

This test suite was designed with the end user in mind and allows for quick provisioning, execution and analysis of the test results, even without prior detailed knowledge of the standard.



### Smart Loopbacks

Four modes are available for looping back test traffic. At Layer 1, all incoming traffic is looped back unaltered. At Layer 2, all incoming unicast traffic is looped back with the MAC source and destination addresses swapped. At Layer 3, all incoming unicast traffic is looped back with the MAC and IP source and destination addresses swapped, and at Layer 4, all incoming unicast traffic is looped back with the MAC, IP, and UDP/TCP ports swapped.

Configurable traffic filters are supported on all MAC, IP, and VLAN fields to allow full control over looped traffic. Traffic is monitored while being looped and key traffic metrics such as frame type, rate, and error/alarms are displayed on screen. These can be compared to results at the far end to pinpoint issues more easily.

### Ethernet OAM Features

The tester offers a complete tool set for Link Level (IEEE 802.3ah) and Service Level (IEEE 802.1ag/ ITU- Y.1731) OAM for monitoring and maintaining carrier grade Ethernet services as well as OAM support for MPLS-TP per ITU-T G.8113.1 including G-ACH and GAL labels support per RFC 4385 and RFC 5586.

**Link Fault Management testing** with 802.3ah OAM, capabilities include:

- Discovery mechanism to verify capabilities and provisioning of link partner
- Remote Loopback command for link performance testing
- Critical Link Event Notification

**Connectivity Fault Management testing** with 802.1ag and Y.1731, capabilities include:

- Linktrace message to perform path discovery
- Loopback message to test connectivity and isolate faults
- Continuity check messages to detect connectivity issues

### Performance Management testing

with Y.1731, capabilities include:

- Frame Loss Measurement (ETH-LM) function for service frame loss ratio measurement
- Delay Measurement (ETH-DM) function for frame delay and frame delay variation measurement

### Intelligent Network/Device Discovery

Easily discover and select another VeEX Ethernet tester or loopback device on the network under test. The local device will control the operation of the far end device, in either loopback or peer-to-peer mode (symmetrical or asymmetrical traffic generation mode). This feature greatly simplifies field testing since there is no need for a second technician to be at the far end configuring the test partner device.

### RFC6349 V-PERF TCP Test

A common source of customer complaints come from file transfer speeds not matching the throughput rates guaranteed in the SLA. While many factors affect TCP applications performance, including customer’s operating system hardware performance and settings (TCP window size), carriers need to prove SLA with a test tool that can show TCP performance independent of Operating System or Server limitations and present repeatable reliable results.

The test set V-PERF feature uses RFC6349 test methodology and metrics for qualifying network TCP performance. It offers a full line rate stateful TCP test with configurable window sizes, client and server modes as well as compatibility with iPerf servers.

### V-FTP and V-TEST Throughput Test

FTP Throughput (V-FTP) and V-TEST features provide additional Layer 4-7 testing. The V-FTP Throughput feature allows the user to test up to full line rate FTP protocol performance to any FTP Server by uploading and downloading files. The V-TEST feature qualifies network TCP/HTTP protocol performance by testing against a V-TEST HTTP server. Both features can test up to the full line rate depending on the server specifications and limitations. Connection time to the server, data transfer time, line rate throughput rates, and protocol (FTP and HTTP) throughput rates key metrics are reported during the tests.

The V-TEST application is flexible enough to operate in different modes depending on user preference; VeEX Managed mode, Speedtest Powered™ mode based on Ookla® technology, and User Managed mode.

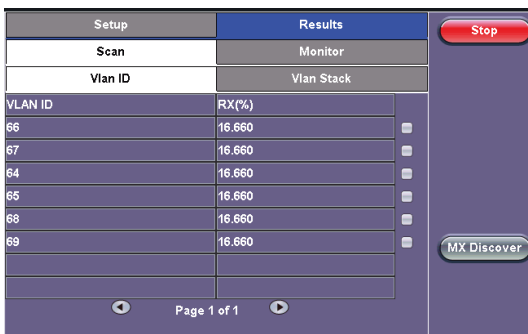
In VeEX Managed mode, the customer’s servers are added to a customer server list that is maintained and managed by VeEX for the end-user’s ease of use and convenience. The full list of server IP addresses or URLs are provided to VeEX. Once added, all the user has to do is select the server from their company list and initiate the test to the selected server.

In Speedtest Powered mode, the test follows Ookla’s methodology and tests to the Speedtest® Server Network. In this mode, the test is compatible with Ookla’s protocol/methodology; it will scan nearby servers in the local market and test to the server with the fastest (lowest latency) response.

In User Managed mode, the user is allowed to enter the server IP/URL and save it to a server list that they can maintain and manage on their own.

**VLAN Scan and Traffic Monitor**

VLAN Scan allows scanning up to 4096 VLAN IDs for switch configuration verification. Verify which VLAN IDs are the top bandwidth users and monitor up to eight live traffic streams (in terminate mode).

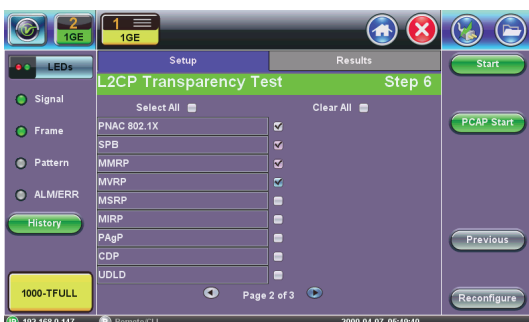


**Delay Measurements**

In addition to round trip delay measurements, the test set provides advanced one-way delay measurement capabilities. The delay measurements are provided for each independent traffic stream.

**Layer 2 Control Protocol Transparency Test**

To verify handling of Layer 2 Control Protocol (L2CP) frames across Carrier Ethernet networks, the Layer 2 Control Protocol Transparency Test feature transmits a set of L2CP frames and verifies that they are forwarded through the network. This feature supports common L2CP frame types (as per MEF 45 standard) as well as Cisco L2CP frame formats.



**Auto Scripting**

The Auto Scripting feature is the perfect tool for the lab environment where multiple short-term or long-term test configurations are required to stress the network equipment and/or network under test, in order to measure and qualify the performance capabilities. The feature is also important in field operations, not only to speed-up service turn-up times, but also to facilitate the entire workforce the same test profiles and test procedures for day-to-day operations.

The Auto Scripting application is an automated sequence of tests that can be carried out by selecting previously configured Throughput or BERT profiles. The profiles can be created with ReVeal and then loaded to the unit or created directly on the unit in the Throughput and BERT applications. Users can select up to ten profiles, each profile configured with its own duration. The duration can be in seconds, minutes, hours, or days. The test sequence will begin with the first profile configured with its corresponding duration, followed by each profile after that. At the end of each profile tested a results file will be stored automatically before the test sequence continues to the next profile. Users have the option to continue or stop the auto scripting test if errors or alarms are detected.

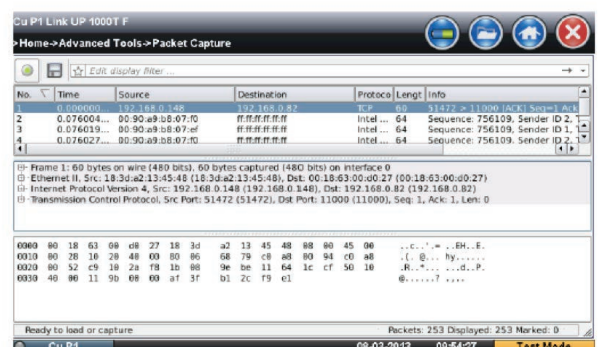


**Network Troubleshooting Tools**

Complementary to the transport layer tests provided with the RFC2544 and V-SAM Y.1564 test suites, the tester provides advanced application layer test capabilities with the following functions: Ping test, Trace route, and network discovery.

**Packet Capture and Decode**

Live packet capture with protocol decode. This function captures packets from the Ethernet test ports and provides packet, protocol summaries and Hexadecimal displays compatible with Wireshark. The captures can be saved in standard PCAP format and exported for analysis.





## Ethernet Specifications

### Electrical Interfaces

Single (TX300sm) or Dual (TX320sm) 10/100/1000Base-T Ports:  
RJ45 connector

Ethernet Classification: Per IEEE 802.3

### Optical Interfaces

Dual 1GE and 10GE LAN/WAN XFP/SFP or SFP+ optical Ports:  
LC connectors

*\*Ethernet and Fibre Channel share XFP/SFP or SFP+ ports*

*\*\*Data rates, performance, and supported transmission protocols are only guaranteed for XFP/SFP or SFP+ supplied by VeEX Inc. If selecting or using other vendors, users should exercise caution*

### Modes of Operation

Terminate

Loopback

Pass Through Monitor

### Traffic Generation

Layer 1 Unframed and Framed, Layer 2, Layer 3, Layer 4

Test Frame Header

- IEEE 802.3 and Ethernet II (DIX) frames
- Configurable Source and Destination MAC and Ethernet Type
- VLAN stacking up to 3 Q-in-Q tags w/configurable priority & type
- Fully configurable IPv4 or IPv6 header
- MPLS up to 3 labels with configurable Label/S/CoS and TTL fields
- MPLS-TP label with configurable LSP, PW and CW fields
- UDP/TCP header with configurable Source & Destination ports
- Provider Backbone Bridge (PBB) support with configurable Backbone MAC Source and Destination, I-SID, PBB-VLAN ID and priority

1GE Fixed or Uniform distribution frame size from 64 to 10000 bytes (Layer 4 tests Fixed frame size up to 1518 only, 10GE Fixed, Random and Increment/Decrement frame size distribution from 64 to 10000 bytes)

Traffic Pattern: Constant, Ramp, Multi Bursts, Single Burst

1GE Error Injection: Single and Count; Bit, CRC, Pause, IP Checksum, TCP/UDP Checksum

10GE Error Injection: Single, Count and Rate; Bit, CRC, Sync Header Error, Block Type Error, Pause, IP Checksum, TCP/UDP Checksum

Alarm Injection: Count (duration) or Continuous

- 10GE LAN: Local Fault, Remote Fault
- 10GE WAN SONET: Local Fault, Remote Fault, LOF, AIS-L, RDI-L
- 10GE WAN SDH: Local Fault, Remote Fault, LOF, MS-AIS, MS-RDI

### Bit Error Rate Test

Test Patterns

- 1GE and 10 GE PRBS:  $2^{31}-1$ ,  $2^{23}-1$ ,  $2^{15}-1$ ,  $2^{11}-1$ , normal and inverted patterns, All 0s, All 1s and User Defined (Layer 2,3,4)
- 1GE: HFPAT, LFPAT, MFPAT CRPAT, RDPAT, JTPAT, SNPAT (Layer 1 Unframed) CRPAT, CJPAT, CSPAT (Layer 1 Framed)
- 10GE: PRBS, LAN Seed A and B (Layer 1 Unframed), CRPAT and CJPAT (Layer 1 Framed)

Error Measurements: Bit/BER, FCS/CRC, Jabber/Runt frames, IP Checksum, TCP/UDP Checksum

Alarm Detection

- 10GE: LOS, LOSync, PAT Loss, Service disruption (current, total, last, min/max, # of occurrences), Local Fault, Remote Fault, PCS-HI-BER, PCS-LOBL, WAN SONET Alarms: LOF, AIS-L and RDI-L WAN SDH Alarms: LOF, MS-AIS, MS-RDI
- 1GE: LOS, LOSync, PAT Loss, Service disruption (current, total, last, min/max, # of occurrences)

Frame/Packet Statistics

- Multicast, broadcast, unicast, pause frames, frame size distribution
- Rates (min, max, average and current): frame rate, bandwidth utilization, frame rate, line rate, data rate
- Frame arrival time (min, max, average and current), Frame Delay Variation

### Multiple Streams Throughput Testing

Up to 8 independent traffic streams generation and analysis, with configurable filters on 1GE interface

Up to 10 independent traffic streams generation and analysis, with configurable filters on 10GE interface

Each stream can be set with independent frame size, bandwidth, traffic profile, and QoS levels

MAC flooding feature: generates test frames with up to 4096 incrementing Source and/or Destination MAC addresses

VLAN flooding feature: generates test frames with up to 4096 incrementing VLAN IDs

Test Patterns: PRBS:  $2^{31}-1$ ,  $2^{23}-1$ ,  $2^{15}-1$ ,  $2^{11}-1$ , normal and inverted patterns, All 0s, All 1s and User Defined

Error Measurements: Bit/BER (Single Stream only), FCS/CRC, Jabber/Runt frames, IP Checksum, TCP/UDP Checksum, Frame Loss (count and %), Out of Sequence

Alarm Detection

- 10GE: LOS, LOSync, Service disruption (current, total, last, min/max, # of occurrences), Local Fault, Remote Fault, PCS-HI-BER, PCS-LOBL, WAN SONET Alarms: LOF, AIS-L and RDI-L WAN SDH Alarms: LOF, MS-AIS, MS-RDI
- 1GE: LOS, LOSync, Service disruption (current, total, last, min/max, # of occurrences)

Frame/Packet Statistics

- Multicast, broadcast, unicast, pause frames, frame size distribution
- Rates (min, max, average and current): frame rate, bandwidth utilization, frame rate, line rate, data rate
- Frame arrival time (min, max, average and current), Frame Delay Variation
- Round Trip delay (min, max, average and current) and Histogram distribution with configurable sampling period and threshold

Service Disruption Time (SDT)

- Per stream inter-packet gap based measurement
- Configurable SDT measurement trigger and SDT violation threshold

### RFC2544 Compliance Testing

Automated tests compliant with RFC2544 with configurable threshold values and maximum transmit bandwidth settings  
Throughput, Latency, Frame Loss, and Back-to-Back (burst) tests  
Frame sizes: 64, 128, 256, 512, 1024, 1280, 1518 bytes and 2 user configurable frames

Tests can be done to a remote loopback or in Peer to Peer mode to a remote test set configured as a responder

Peer to peer mode allows asymmetric bandwidth RFC2544 test

### RFC2544 Advanced SLA Mode

RFC2544 compliant test on primary test stream with up to 7 independent background traffic streams

Each background stream can be set with independent frame size, bandwidth, traffic profile, and QoS levels

### ITU-T Y.1564 V-SAM Test

V-SAM test suite compliant with ITU-T Y.1564 standard

Support for Multi-stream traffic generation, Service Configuration and Service Performance tests

Independently configurable for each stream

- Frame size: Fixed or EMIX pattern (1GE only)
- Bandwidth profile parameters: CIR, EIR, CBS (1GE only), EBS (1GE only) Traffic Policing
- Service acceptance criteria: FLR, FTD, IFDV, AVAIL

Simple summary Pass/Fail results tables and drill down capability with detailed measurements (Frame Loss, Frame Transfer Delay, Frame Delay Variation, Availability) for each service

### Link Level OAM - IEEE 802.3ah

Modes: Active and Passive, with configurable Vendor OUI, Vendor SPI, MAX PDU length, and PDU rate

Discovery capabilities: remote loopback, link events, MIB retrieval

Link Events Notifications: Link Fault, Critical Event, Dying Gasp

Remote Loopback control

### Service Level OAM-IEEE 802.1ag, ITU-T Y.1731 and MPLS-TP OAM ITU-T G.8113.1

MEP emulation with configurable MD name, MA name, local MEP ID, MD level, VLAN ID

ITU-T G.8113.1 configurable LSP and PW label, CoS, TTL, GAL Label 13 or 14, CoS, TTL, ACH Channel Type

Continuity Check Message (CCM): with priority level & interval selection

Loopback Messages (LBM/LBR): loopback message generation and response to destination MEP or MAC address

Link Trace Messages (LTM/LTR): link trace message generation and response to destination MEP or MA address with configurable TTL

Loss Measurement Messages (LMM/LMR): loss measurement message generation and response to destination MEP or MAC with configurable rate and number of messages

Delay Measurement Messages (DMM/DMR): delay measurement message generation and response to destination MEP or MAC with configurable rate and number of messages

### Smart Loopback Mode

Layer 1: incoming traffic looped back unchanged

Layer 2: incoming traffic looped back with MAC source and destination addresses swapped

Layer 3: incoming traffic looped back with MAC and IP source and destination addresses swapped

Layer 4: incoming traffic looped with MAC, IP, and UDP/TCP ports swapped

Configurable traffic filters on MAC and IP source and destination addresses, VLAN ID and Priority, IP Precedence and TOS, UDP source and destination ports

All key measurements on received traffic provided on loopback unit

### VePAL Discovery Function and Remote Control

Discovery function to all VeEX VePAL devices within subnet or manual control of VeEX VePAL devices in routed network

Remote Control of Loopback capability

Peer to Peer Controller/Responder configuration for RFC2544 test with asymmetric bandwidth test capability for end-to-end RFC2544 test

### VLAN Scan and Monitor

Scans incoming traffic and discovers all VLAN flows including Q-in-Q tagging

Key statistics on traffic rates, alarms and errors are reported for monitored streams (up to 8)

### Pass Through Monitor Mode (TX320sm)

Pass through monitoring function between 2x 1GE or 2x 10GE fiber ports,, or 2x 1GE copper ports

Key statistics on traffic rates, alarms and errors are reported, as well as configurable performance thresholds

### Layer 2 Control Protocol Transparency Test

- Selectable Layer 2 Control protocol frames and configurable frames
- Supported L2CP frame types per MEF 45 standard
- Cisco L2CP frame formats
- Selectable frame rate and count
- TX and RX frames statistics

### IPv6

IPv6 compliant test traffic generation and analysis for all test applications (Y.1564 V-SAM, RFC2544, BERT and Multi-stream Throughput)

IPv6 Loopback capability

IPv6 Static or Stateless Auto Configuration, Ping and Trace Route functions

## Layer 4-7 Features

### V-PERF Test

TCP Throughput Compliant with RFC6349  
 Stateful TCP Test at line rate  
 TCP Client and Server modes  
 Compatible with iPerf Client/Server  
 MTU search per RFC4821  
 Round Trip Time Measurement  
 Configurable TCP Window sizes  
 Multi-Window size tests  
 Measurements: TCP Throughput rate (min, max, average),  
 Transfer file size and duration, Transfer time ratio, TCP  
 Efficiency %, Buffer Delay %

### V-TEST HTTP Test

HTTP Throughput  
 Full line rate  
 HTTP client mode  
 Connection time to server  
 Total Data Transfer time  
 HTTP Throughput rates  
 Requires VeTest Server

### FTP Throughput Test

FTP Throughput  
 Full line rate  
 FTP client mode  
 Connection time to server  
 Total Data Transfer time  
 FTP Throughput rates  
 Compatible with Linux and Windows FTP servers

## Network Troubleshooting Tools

### IP Tools

Provides basic Ethernet and Internet connectivity to the test set as well as connectivity troubleshooting tools to Ethernet test ports (10/100/1000BaseT, 100FX/1000BaseX, 10GE) and Management port (10/100BaseT)  
 IP: IPv4 (Static, DHCP) and IPv6 (Static, Auto) and PPPoE  
 VLAN support  
 Ping, Trace Route check  
 HTTP Web browsing internet connectivity check

### Packet Capture and Decode

Line rate Packet capture from test interfaces

- 10/100/1000BaseT
- 100FX/1000BaseX
- 10GE

Configurable capture filters

- MAC and IP
- UDP and/or TCP
- Multicast, Broadcast, IP Checksum error, UDP/TCP Checksum Error events

Integrated packet decode compatible with Wireshark  
 Packet captures can be saved and exported PCAP capture format, compatible with Wireshark

### Net Wiz

Network Discovery Tool

- Discovery: TX Frames, RX Frames, RX Errors, Advertised Speed, Advertised Duplex, Devices found, Networks found
- Devices: Total number, Routers, Servers, Hosts
- Device Details: Attribute, IP address, MAC address, Group Name, Machine Name, Ping OK
- Networks: IP Subnets, Hosts, Domains, Hosts Names

## OTN, SDH, SONET, PDH, DSn

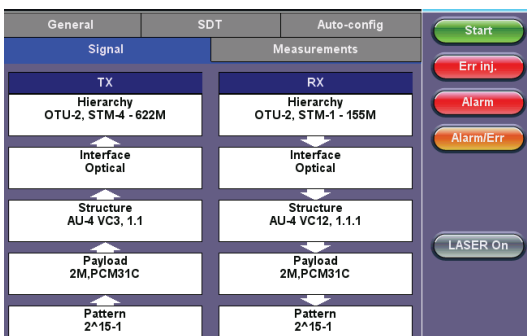
### Key Features

- Flexible wavelength and bit rate options using industry standard pluggable optics
- OTN: OTU2, OTU1, OTU2e, OTU1e
- SDH/SONET: STM-64/16/4/1/0, OC-192/48/12/3/1, STS-1
- PDH/DSn: DS1, DS3, E1, E2, E3, E4
- EoOTN Testing with OTU1e, OTU2e, ODU0 and ODUflex and Ethernet payloads
- Coupled or independent Tx and Rx settings
- Tandem Connection Monitoring
- Service disruption testing (SDT) and APS
- Round trip delay on all interfaces and payload mappings
- Jitter/Wander Analysis (E1, E3, DS1, DS3 and STM-1o, OC-3)

### Quick and Intuitive Graphical Setup

The combination of OTN, SDH/SONET and PDH/DSn, common in today's network environment, can create complex test scenarios. Therefore technicians and field engineers need a tool that is quick and easy to configure. Intuitive graphics, drop down menus and touchscreen operation greatly simplify test interface, signal structure, payload mapping and test pattern setup.

Test configuration, menus, and results are presented in VeEX's intuitive hierarchical test signal builder GUI, requiring little or no training for new or existing VePAL™ users, maintaining a consistent user experience from the lab to the field.



The transmitter and receiver can operate independently, or they can be coupled depending on test setup. Framed signals can be equipped with unstructured or structured payloads with selected test pattern filling the entire test payload (Bulk) or a structured payload (SDH/SONET framed client signal) with or without PDH/DSn multiplexed clients.

Layer-based graphical configuration interface allow users to build the test signal in a logical layer by layer sequence.

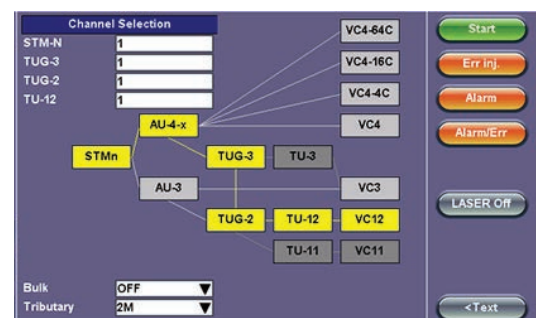
- OTN/SDH/SONET/PDH/DSn interface selection
- Optical or Electrical signal settings
- Mapping and Multiplexing
- Payload (Bulk, multiplexed, or Ethernet)
- Test Pattern (CBR) or Traffic (Packets)
- Independent and Coupled TX and RX configurations

## Physical Layer Testing

Verifying that signals are within prescribed specifications and limits is recommended prior to performing framing and payload analysis. High optical power levels can saturate receiver equipment, while low power levels are susceptible to noise which result in bit errors. Clock tolerances for each individual signal hierarchy is clearly defined by Telcordia and ITU-T recommendations and should be verified as part of any acceptance/conformance test.

## Advanced Payload Mapping and Multiplexing

Test the operation of Add/Drop Multiplexers, Digital Cross Connects and other Network Elements (NE) by verifying the correct mapping and de-mapping of different tributaries and payloads into OTN, SDH and SONET containers, monitoring any anomalies and defects at every multiplex level, according to ITU-T and Telcordia recommendations.



PDH/DSn client can be multiplexed and mapped into SDH/SONET, which in turn can be mapped and multiplexed into OTN using bit-synchronous or asynchronous modes. In synchronous mode the Optical Payload Unit (OPU) clock is derived from the mapped client signal while in asynchronous the OPU clock is independent.

## Complete Overhead Decoding and Generation

Binary, hexadecimal and detailed text decode of all applicable Section, Path overheads and Framing word bytes are performed through individual byte and bit selection or through dedicated test applications (e.g. TCMi, APS, Payload Labels, Pointer Tasks).

Analysis															
FAS						MF	SM			GCC0		RES	RES	JC	
OA1	OA1	OA1	OA2	OA2	OA2	8E	TTI	BIP	BEI	TTI	BIP	BEI	00	00	00
F6	F6	F6	28	28	28		TI	24	00	TI	24	00	00	00	00
RES	DM	TC	TCM6				TCM5			TCM4		FT	RES	JC	
							TTI	BIP	BEI	TTI	BIP	BEI	00	00	00
00	00	00	00	00	00		TI	24	00	TI	24	00	00	00	00
TCM3			TCM2				TCM1			PM		EXP	RES	JC	
TTI	BIP	BEI	TTI	BIP	BEI	TTI	BIP	BEI	TTI	BIP	BEI	RR	RR	00	
TI	C7	00	TI	E4	00	TI	E4	00	TI	F3	01	00	00	00	
GCC1		GCC2		APS/PCC		RES							PSI	NJO	
00	00	00	00	00	00	00	00	00	00	00	00	00	00	00	
												FE	00		

Overhead byte control allows the manipulation and easy encoding of transmitted overhead bytes in both terminated and payload through modes to stress the network responses to various conditions.

## Tandem Connection Monitoring (TCM)

TCM helps segment the end-to-end path to diagnose, isolate and troubleshoot individual sections and resolve finger-pointing in inter-carrier and multi-region scenarios.

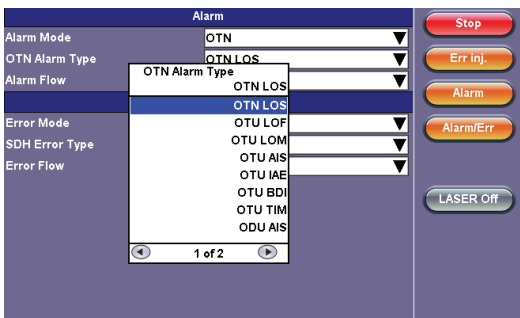


**Service Disruption Time and APS**

SDT and Automatic Protection Switch timing measurements use trigger events to measure outages and link recovery times at different levels and evaluate them against Pass/Fail criteria. It also provides detailed events recording to understand what happened during the service outage.

**Error Insertion and Alarm Generation**

Alarms and Errors can be inserted into any of the mapping or multiplexing layers, from OTN signal to the test payload itself. A full range of OTN, SDH/SONET and PDH/Dn defects and anomalies are supported depending on the signal structure setup. Single errors, preset rates or user-defined error rates are supported.



**Intuitive Test Results**

A summary screen quickly reports signal status and critical Error and Alarm parameters with easy-to-read Pass/Fail indicators. Additional screens accessed via a simple tab system display signal levels, anomalies and events.

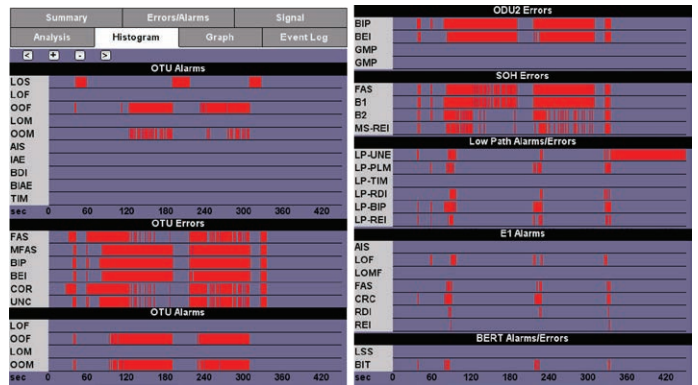
Analysis	Histogram	Graph	Event Log
Summary	Errors/Alarms	Signal	
ST:03/02 05:13:10 ET:00/00:02:14			
LOS Alarm			OK
OTN Alarms			OK
OTN Errors			OK
SDH Alarms			OK
SDH Errors			OK
PDH Alarms			OK
PDH Errors			OK
<b>No errors - OK</b>			

Alarms and Errors overview with history indicators provide direct (touch) access to counters and statistics and complement the soft LEDs with a layered representation of all defects and anomalies.

OTU2	OTU1	ODU2	OTU0	OTU1	OTU0	ODU0	RS	MS	AU	HP	TU	LP	E3	E2	E1	Pat
LOF	FAS	AIS	LOF	FAS	AIS	LOF	FAS	AIS	AIS	UNEQ	AIS	UNEQ	AIS	AIS	LSS	
DOF	MFAS	OCI	DOF	MFAS	OCI	DOF	MFAS	RDI	LOP	RDI	LOP	RDI	LOF	LOF	LOF	Bit
LOM	BIP	LCK	LOM	LCK	LOM	LCK	TIM	B2		TIM		TIM	FAS	FAS	LOM	
OOM	BEI	BDI	OOM	BDI	OOM	BDI	DOF	REI		PLM		PLM	RDI	RDI	FAS	
AIS	EFEC	TIM		TIM		TIM	B1			B3		B3		RDI		
IAE	WFEC	PLM		PLM		PLM				REI		REI		CRG		
BDI		BIP		BIP		BIP										
BIAE		BEI		BEI		BEI										
TIM																

**Powerful Measurement Histograms**

Visual representation of individual or simultaneous measurement results over time, with 1-second resolution simplifies correlation of alarm and error occurrences.



**Performance Analysis**

Bringing-into-service (BIS), In-service and out-of-service performance evaluations according to GR-253, G.821, G.826, G.828, G.829, G.8201, M.2100, M.2101. The test set analysis screens present Pass/Fail criteria for each performance parameter, based on Telcordia/ITU-T recommendations.

**Line and Payload Frequency Measurements**

Frequency and offset present in the Optical Transport Unit (OTU) line, Optical Payload Unit (OPU), SDH/SONET client and PDH/Dn multiplexed layers are measured to verify basic master-slave synchronization settings.

Analysis	Histogram	Graph	Event Log
Summary	Errors/Alarms	Signal	
<b>Frequency</b>			
OTN current (bps)	10709225031		
Offset (ppm):	0.0		
Min (ppm):	0.0		
Max (ppm):	0.0		
SDH current (bps)	622079960		
34M current (bps)	34367928		
8M current (bps)	8447982		
2M current (bps)	2047996		

**TX Clock Sources**

- Internal: ±3.5 ppm stability per ITU-T G.812
- Recovered: from the incoming signal
- External reference via CLK (SMA) connector
  - 1.544 MHz, 2.048 MHz, 1.544 Mbps, 2.048 Mbps
- Tx Frequency Offset: Up to 50 ppm (25,000 ppm for E1) in steps of 0.1 ppm for both optical and electrical interfaces
- Clock recovery (pulling range) per ITU-T G.703

**Clock References**

- Internal: ± 3.5 ppm stability per ITU-T G.812
- External Clock Input
  - Unbalanced 75Ω SMA
  - 1.544 MHz, 2.048 MHz, 1.544 Mbps, 2.048 Mbps

**Optical Interfaces\***

Pluggable transceivers conforming to Multi Source Agreement (MSA) specifications  
 Compliant to ITU-T G.957/G.691 Optical interfaces and systems relating to SDH

## TX Clock Sources

Internal:  $\pm 3.5$  ppm

Recovered: from the incoming signal

External reference via CLK (SMA) connector

- 1.544 MHz, 2.048 MHz, 1.544 Mbps, 2.048 Mbps

Tx Frequency Offset: Up to 50 ppm (25,000 ppm for E1) in steps of 0.1 ppm for both optical and electrical interfaces

Clock recovery (pulling range) per ITU-T G.703

## Clock References

Internal:  $\pm 3.5$  ppm

External Clock Input

- Unbalanced 75 $\Omega$  SMA
- 1.544 MHz, 2.048 MHz, 1.544 Mbps, 2.048 Mbps

## Optical Interfaces\*

Pluggable transceivers conforming to Multi Source Agreement (MSA) specifications

Compliant to ITU-T G.957/G.691 Optical interfaces and systems relating to SDH

Optical Power Measurement:  $\pm 2$  dB accuracy, 1 dB resolution

Safety: Class 1, per FDA/CDRH, EN (IEC) 60825 eye safety regulations

Operating temperature range: -10°C to 70°C

ROHS compliant and Lead Free per Directive 2002/95/EC

## OTN Testing

The test set offers a full range of OTN testing capabilities, including service-activation (Bringing-into-Service), performance verification, maintenance, and troubleshooting. It offers Multi-Layer testing for Physical layer, OTU/ODUk, multiplexed or bulk payloads, and EoOTN with Ethernet traffic generation up to 100% rate.

### Key Features

- OTU2 and OTU1
- OTU1e and OTU2e over-clocked bit rates
- EoOTN testing with internally generated Ethernet payload mapped into OTU1e, OTU2e, ODU0 or ODUflex
- Synchronous and asynchronous mapping of SONET/SDH signals, including multiplexed PDH/DSn payloads
- OTU, ODU, OPU overhead manipulation and monitoring
- OTU, ODU, OPU layer alarms/errors generation and analysis
- OTU, ODU, TCMi trace messages
- Forward error correction (FEC) testing
- Tandem Connection Monitoring
- Service Disruption Time measurement and Events tracking
- Frequency offset generation

### OTN Interfaces

Standards: ITU-T G.709, ITU-T G.798, ITU-T G.872

- OTU2e 11.095 Gbps
- OTU1e 11.045 Gbps
- OTU2 10.709 Gbps
- OTU1 2.666 Gbps

### Operating Modes

Normal (terminal)

- The instrument terminates the line, serving as source and sink for the generated traffic
- Offers full access to Overhead and Payload alarms and error generation and monitoring

### OTN Mappings

- ODU2-Bulk (test pattern)
- ODU2-STM-64 or OC-192, synchronous and asynchronous, including all supported mappings and multiplexed tributaries, down to E1/DS1 (Nx64/Nx56k)
- ODU1-Bulk (test pattern)
- ODU1-STM-16 or OC-48, synchronous and asynchronous, including all supported mappings and multiplexed tributaries, down to E1/DS1 (Nx64/Nx56k)
- ODU2e-Bulk and 10GE payloads
- ODU1e-Bulk and 10GE payloads
- ODU0-Bulk and 1GE payloads
- ODUflex with Nx1.25G Ethernet payloads

Advanced sub-rate multiplexing and mappings of SDH/SONET payloads into OTN, including multiple ODUk levels, with ODTU2.1/ODTU12-ODTU01, AMP, BMP and GMP support. VC/STS/VT and PDH/DSn sub-multiplexing are also supported

- OTU1: ODU1-Bulk, ODU1-STM16, ODU1-ODU0-STM4/1
- OTU2: ODU2-Bulk, ODU2-STM64, ODU2-ODU1-STM16, ODU2-ODU0-STM4/1, ODU2-ODU1-ODU0-STM4/1

## OTU Layer

### Alarm and Error Monitoring

- Alarms: LOF, OOF, LOM, OOM, OTU-AIS, OTU-IAE, OTU-BDI, OTU-BIAE, OTU-TIM
- Errors: OTU-FAS, OTU-MFAS, OTU-BIP, OTU-BEI, Correctable FEC, Uncorrectable FEC

## ODU Layer

### Alarm and Error Monitoring

- Alarms: ODU-AIS, ODU-OCI, ODU-LCK, ODU-BDI, ODU-TIM
- Errors: ODU-BIP-8, ODU-BEI

## OPU Layer

Payload Type (PT): Generates and displays received PT value

Expected Payload label setting

Enable/Disable PLM monitoring

### Alarm and Error Monitoring

- Alarms: OPU-PLM

## BER Test

### Alarm and Error Monitoring

- Alarms: LSS (Loss Sequence Synchronization)
- Errors: Bit (Test Sequence Error)

## Test Patterns

The following test sequences can be generated to fill the payload

- PRBS:  $2^{31}-1$ ,  $2^{23}-1$ ,  $2^{20}-1$ ,  $2^{15}-1$ ,  $2^{11}-1$ ,  $2^9-1$ ,  $2^7-1$ , QRSS
- Fixed: 0000, 1111, 1010, 1100, 1in8, 2in8, 3in24, DALY, NET55 and OCT55
- User defined: Ten 32-bit and one 24-Bit Programmable sequences

The following test sequences can be generated in Bulk mode

- PRBS:  $2^{31}-1$ ,  $2^{23}-1$

## Error Insertion

### OTN

- OTU-FAS, OTU-MFAS, OTU-BIP, OTU-BEI, Correctable FEC, Uncorrectable FEC, ODU-BIP, PM-BEI

### Payload

- Bit (Pattern)

### Injection Modes

- Single, Count (# of errors), Fixed Rates (1E-9 to 1E-3)

## Alarm Generation

### Physical Layer

- LOS

### OTN

- OTU-LOF, OTU-LOM, OTU-AIS, OTU-IAE, OTU-BDI, OTU-BIAE, OTU-TIM, ODU-AIS, ODU-OCI, ODU-LCK, ODU-BDI, ODU-TIM, OPU-PLM

### Generation Modes

- Continuous (manual), Count (0.1, 1, 10, 100 seconds)

## OTN Overhead Analysis and Generation

### Analysis – Decode and Display

#### Byte Decoding

- On-screen Decode

OTUk bytes in hexadecimal, binary or ASCII formats

- SM-TTI (SAPI, DAPI, User), SM-BIP, SM-BEI/BIAE, SM-BDI, SM-IAE
- GCC0 bytes

ODUk bytes in hexadecimal, binary or ASCII formats

- DMp and DMti
- PM-TTI (SAPI, DAPI, User), PM-BIP, PM-BEI, PM-BDI, PM-STAT
- ODU-TCM-ACT, TCMi-TTI (SAPI, DAPI, User), TCMi-BIP, TCMiBEI/BIAE, TCMi-BDI, TCMi-STAT
- GCC1, GCC2 bytes
- PCC/APS bytes
- OPUk bytes in hexadecimal and binary formats
- JC1, JC2, JC3, (JC4, JC5, JC6), PSI, NJO
- Reserved bytes

### Generation - Programmable Bytes and sequences

#### OTU and ODU Trace Generation

- SAPI (15 characters)
- DAPI (15 characters)
- User (31 characters)
- Copy from received trace

#### TCMi Trace Generation

- SAPI (15 characters)
- DAPI (15 characters)
- User (31 characters)
- Copy from received trace

#### Set TCMi Status

- ODU-TCM-ACT (Binary and Hex)

#### Programmable Expected Traces

- OTU and ODU SAPI, DAPI, and User
- Copy from received trace
- Enable/Disable TIM monitor

## Tandem Connection Monitoring (TCM)

### TCMi Monitoring (1 through 6)

- LTC, AIS, OCI, LCK, BDI, BIAE, IAE; count
- IEC, BEI; count and rate

### Trace Identifier Monitoring and Generation

- Programmable SAPI, DAPI and User traces
- Copy trace from RX
- Enable/Disable TIM monitoring

## Ethernet over OTN (EoOTN)

### Optional Mappings

- Direct mapping of 10G Ethernet payload into OTU1e or OTU2e, synchronous or asynchronous
- Direct mapping of 1G Ethernet payload into ODU0
- Direct mapping of Nx1.25G Ethernet payload into ODUflex

### Ethernet Payload

- Layer 1 Unframed or Framed
- Layer 2, 3 and 4
- VLAN: Up to 3 tags
- MPLS: Up to 3 tags
- Layer 4: TCP or UDP

### Ethernet Layer Testing\*

- BERT
- RFC2544
- Throughput

### Test Patterns (payload)

- PRBS:  $2^{11}-1$ ,  $2^{15}-1$ ,  $2^{23}-1$ ,  $2^{31}-1$
- Fixed: All 1s and All 0s
- User-defined 32 bit sequence
- Normal or Inverted

\*Refer to the Ethernet Testing section for more details on Ethernet layer tests.

## SDH/SONET Testing

Installation, commissioning, monitoring and maintenance of SDH/SONET and PDH/DSn networks is simplified thanks to a combination of intuitive features and powerful test functions. SDH signals are often compromised by various impairments in the multiplexing process therefore defining the type of anomaly or defect to isolate the network element or signal path causing the problem is crucial. Fast troubleshooting and comprehensive analysis of transmission problems can be performed using intrusive, non-intrusive and monitoring test modes. Novice users will benefit from the easy-to-use Auto-configuration and Tributary Scan test modes, while experienced users will appreciate the array of advanced features such as Overhead Monitoring and Byte Control, Pointer Test Sequences, Path Trace Generation, Tandem Connection Monitoring and lots more.

SDH/SONET signals can be used as physical layer or as OTN payloads, and can contain multiplexed PDH/DSn clients, providing all the flexibility to address complex test scenarios.

### Key Features

- STM-64/16/4/1/0
- OC-192/48/12/3 and STS-1
- Bulk VC/STS/VT, PDH/DSn and multiplexed payloads
- Overhead manipulation and monitoring
- Alarms/errors generation and analysis
- Service Disruption Time (SDT) and APS
- Round Trip Delay
- Tributary Scan
- Tandem Connection Monitoring
- Pointer Test Sequences
- Jitter and Wander Measurements
- Test Interfaces

#### Optical

- STM-64/OC-192 9.953 Gbps
- STM-16/OC-48 2.448 Gbps
- STM-4/OC-12 622 Mbps
- STM-1/OC-3 155 Mbps
- STM-0/OC-1 52 Mbps

#### Electrical

- BNC (75Ω unbalanced)
- STS-1/STM-0e, 51.84 Mbps, B3ZS
- STS-3/STM-1e, 155.520 Mbps, CMI

#### Receiver Sensitivity

- 51.840 Mbps (STS-1/STM-0e)
- Terminate: ≤ 10 dB (cable loss only)
- Monitor (PMP): ≤ 26 dB (20 dB resistive, 6 dB cable loss)
- 155.520 Mbps (STM-1e)
- Terminate: ≤ 12.7 dB (coaxial cable loss only)

### Operating Modes

#### Normal (terminal)

- The instrument terminates the line, serving as source and sink for the generated traffic
- Offers full access to Overhead and Payload alarms and error generation and monitoring

#### Payload Through (intrusive)

- Instrument retransmits the received Payload and allows access to Overhead manipulation
- Offers access to Overhead alarms and error generation as well as Payload monitoring

#### Line Through (transparent)

- Instrument regenerates and retransmits the entire received signal
- Offers minimal interaction with the test signal
- Provides full access to Overhead and Payload alarms and error monitoring

### Out-of-Service Testing

#### Applications include:

- BERT
- Tributary Mapping/de-Mapping
- Path/Section Trace Generation
- Bringing Into Service (M.2100)
- Pulse Mask Analysis (E1/E3/DS1/DS3)
- Mux Testing
- Round Trip Delay
- Pointer Test Sequences
- Jitter Generation, MTJ, JTF

### In-Service Monitoring

#### Applications include:

- Optical Power and Frequency
- Tributary Scanning
- Performance Analysis per G.826, G.828, G.829, M.2101
- Pointer Analysis and Generation
- APS Measurement
- Tandem Connection Monitoring
- Overhead Byte Control and Decode
- Jitter and Wander Measurements

### SDH Mappings

#### (According to ITU-T G.707)

- C-11 (Bulk/PRBS, unframed or framed DS1)
- C-12 (Bulk/PRBS, unframed or framed E1, asynchronous, bit or byte synchronous)
- C-3 (Bulk/PRBS, unframed, framed or channelized E3 or DS3) via AU-3 or AU-4
- C-4 (Bulk/PRBS, unframed or framed E4)
- C-4-4c (Bulk/PRBS)
- C-4-16c (Bulk/PRBS) • C-4-64c (Bulk/PRBS)

### SONET Mappings

#### (According to Telcordia GR-253/ANSI T1.105)

- VT-2 (unstructured or framed E1)
- VT-1.5 (unstructured or framed DS1, asynchronous or float byte synchronous)
- STS-1 SPE (unstructured or framed E3 or DS3)
- STS-3c SPE (unstructured or framed E4)
- STS-12c SPE (Bulk) STS-48c SPE (Bulk)
- STS-192c SPE (Bulk)

### Test Patterns

#### The following test patterns can be generated

- PRBS:  $2^{31}-1$ ,  $2^{23}-1$ ,  $2^{20}-1$ ,  $2^{15}-1$ ,  $2^{11}-1$ ,  $2^9-1$ ,  $2^7-1$ , QRSS
- Fixed: 0000, 1111, 1010, 1100, 1in8, 2in8, 3in24, DALY, NET55 and OCT55
- User defined: Ten 32-bit and one 24-Bit Programmable sequences
- Mode: Normal or Inverted

**Errors**

Insertion

- SDH: FAS, B1, B2, MS-REI, B3, HP-REI, LP-REI, LP-BIP, and bit errors
- SONET: FAS, B1, B2, REI-L, B3, REI-P, REI-V, BIP-V, and bit errors
- Modes: Single, Count (# of errors), Fixed Rates (1E-9 to 1E-3)

Detection

- SDH: FAS, B1, B2, MS-REI, B3, HP-REI, LP-BIP, LP-REI, slips and bit errors
- SONET: FAS, B1, B2, REI-L, B3, REI-P, REI-V, BIP-V, slips and bit errors

**Alarms**

Generation

- SDH: LOS, LOF, MS-AIS, MS-RDI, RS-TIM, AU-LOP, AU-AIS, HPUNEQ, HP-PLM, HP-RDI, HP-TIM, TU-LOM, TU-LOP, TU-AIS, LPUNEQ, LP-PLM, LP-RDI, LP-RFI, LP-TIM, 2M AIS, 2M LOF, 2M RDI
- SONET: LOS, LOF, AIS-S, RDI-S, TIM-P, LOP-P, AIS-P, UNEQ-P, PLM-P, RDI-P, LOM-V, LOP-V, AIS-V, UNEQ-V, PLM-V, RDI-V, RFI-V, TIM-V, DS1-AIS, DS1-LOF, 2M-AIS, 2M-LOF, 2M-RDI, 45M-AIS, 45M-LOF
- Modes: Continuous (manual), Count (0.1, 1, 10, 100 seconds)

Monitoring and Detection

- SDH: LOS, LOF, OOF, RS-TIM, MS-AIS, MS-RDI, AU-AIS, AU-LOP, HP-UNEQ, HP-PLM, HP-TIM, HP-RDI, TU-LOM, TU-AIS, TU-LOP, LP-UNEQ, LP-PLM, LP-TIM, LP-RDI, LP-RFI
- SONET: LOS, LOF, OOF, AIS-S, RDI-S, TIM-P, LOP-P, AIS-P, UNEQ-P, PLM-P, RDI-P, LOM-V, LOP-V, AIS-V, UNEQ-V, PLM-V, RDI-V, RFI-V, TIM-V

**Overhead Analysis and Generation**

Network Architectures supported

- Linear (per ITU-T G.783)
- Ring (per ITU-T G.841)

Analysis – Decode and Display SOH/POH bytes in hexadecimal, binary or ASCII formats

- S1 synchronization status
- C2 HP/STS signal label
- J0 trace identifier (1, 16 or 64 bytes) in ASCII format
- J1 trace identifier (16 or 64 bytes) in ASCII format
- J2 trace identifier (16 or 64 bytes) in ASCII format
- K1, K2 APS Control
- V5 LP/VT signal label

Generation - Programmable Bytes RSOH/Section

- J0 trace: 1 byte hexadecimal, 16 byte ASCII with CRC-7 and 64 byte with CR+LF

MSOH/Line

- K1, K2 APS bytes per ITU-T G.783 and G.841
- S1 synchronization status message

HO-POH (VC-4, VC-3)/STS-POH (STS-N SPE, STS-1 SPE)

- J1 trace: 16 byte ASCII with CRC-7 or 64 byte ASCII sequence
- C2 signal label
- H4 Sequence/Multi-frame Indicator
- G1 (bit 5): End-to-end path status (RDI generation)
- K3 (bits 1-4) APS signaling

LO-POH (VC-3)/STS-POH (STS-1 SPE)

- J1 trace: 16 byte ASCII with CRC-7 or 64 byte ASCII sequence
- C2 signal label

- G1 (bit 5): End-to-end path status (RDI generation)
- K3 (bits 1-4) APS signaling

LO-POH (VC-12, VC-11)/VT-POH (VT-1.5, VT-2)

- V5 (bits 5-7) LP/VT signal label
- J2 trace: 16 byte ASCII with CRC-7 or 64 byte ASCII sequence
- K4 (bits 3-4) LP/VT APS signaling

**Tributary Scan**

Automatically scans VC-12, VC-11, VT-1.5 or VT-2 for errors, alarms and events using a sequential BER tests

**Pointer Analysis and G.783 Test Sequences**

Pointer movements monitoring and generation for SDH and SONET Monitor

- AU, TU, STS and VT pointer adjustments
- SS bits, LOP, New Data Flags (NDF)
- Current value, increments, decrements, sum, difference
- Tributary frequency offset (ppm of AU/TU or STS/VT)

Generation

- Pointer sequences: ITU-T G.783, Telcordia GR-253
- Pointer Types: AU, TU, STS, VT
- Single pointer, increment, decrement, or increment/decrement
- Sequence: Basic, Single Alternating, Regular Additive, Regular Cancel, Double Alternating, Burst, Transient Burst, 87/3, 87/3 Additive, 87/3 Cancel, Periodic Additive, Periodic Cancel
- Programming of SS bits
- Adjustments: Increment, Decrement, New Value
- Parameters: N, T1, T2, T3, T4

**Tandem Connection Monitoring (TCM)**

Generation and analysis of N1 (HP-TCM) and N2 (LP-TCM) bytes Detection, display and analysis of events

- UNEQ, TC-AIS, TC-ODI, TC-IEC, TC-REI, TC-OEI, TC-LTC, TC-RDI



## PDH/DSn Testing

While telecommunications network technologies have evolved to include long-distance high-capacity OTN, SDH/SONET or Ethernet trunks, PDH/DSn links and clients are frequently retained for voice, access, service delivery and for other economic reasons. As such, testing PDH/ DSn interfaces, payloads and services continue to play an important role in test and measurement.

This test set provides PDH/DSn interfaces, payload generation, access and testing capabilities for 140 Mbps (E4), 45 Mbps (DS3), 34 Mbps (E3), 2 Mbps (E1), 1.544 Mbps (DS1), down to N×64 and N×56 kbps. PDH/DSn clients can be multiplexed into a higher PDH/DSn signal, mapped into SDH/SONET containers, and then mapped into OTN, giving it the flexibility to address complex test scenarios.

### PDH/DSn Interfaces

#### Electrical

RJ-48 (120Ω) or Bantam (100Ω) balanced

- DS1, 1.544 Mbps, AMI & B8ZS, 100Ω balanced
- E1, 2.048 Mbps, HDB3 & AMI, 120Ω balanced
- G.703 Codirectional, 64 Kbps, 120Ω balanced BNC (75Ω unbalanced)
- E1, 2.048 Mbps, HDB3 & AMI
- E2, 8.448 Mbps, HDB3
- E3, 34.368 Mbps, HDB3
- DS3, 44.736 Mbps, B3ZS
- E4, 139.264 Mbps, CMI

Compliant to ITU-T G.703, G.823, G.824, G.772 and ANSI T1.102

#### Receiver Sensitivity

##### 1.544 Mbps (DS1)

- Terminate: ≤ 26 dB (cable loss only) at 0 dB DSX Tx
- Monitor (PMP): ≤ 26 dB (20 dB resistive, 6 dB cable loss)
- Bridge: ≤ 6 dB (cable loss only)
- Line Equalizer function provides increased dynamic range to support for LBO < -7.5 dB

##### 2.048 Mbps (E1)

- Terminate: ≤ 6 dB (cable loss only)
- Monitor (PMP): ≤ 26 dB (20 dB resistive, 6 dB cable loss)
- Bridge: ≤ 6 dB (cable loss only)
- Line Equalizer function provides increased dynamic range to support for LBO < -7.5 dB

##### 8.448 Mbps (E2)

- Terminate: ≤ 6 dB (cable loss only)
- Monitor (PMP): ≤ 26 dB (20 dB resistive, 6 dB cable loss)

##### 34.368 Mbps (E3)

- Terminate: ≤ 12 dB (cable loss only)
- Monitor (PMP): ≤ 26 dB (20 dB resistive, 6 dB cable loss)

##### 44.736 Mbps (DS3)

- Terminate: ≤ 10 dB (cable loss only)
- Monitor (PMP): ≤ 26 dB (20 dB resistive, 6 dB cable loss)

##### 139.264 Mbps (E4)

- Terminate: ≤ 12 dB (coaxial cable loss only)

### Operating Modes

Terminate, Monitor, Bridge (E1 & DS1)

### Signal Structure

#### 1.544 Mbps (DS1)

- Unframed or Framed SF (D4), ESF per ANSI/Telcordia standards
- Fractional test signal in N x 64 kbps or N x 56 kbps, where N=1 to 24

#### 2.048 Mbps (E1)

- Unframed or Framed with/without CRC per ITU-T G.704 (PCM30, PCM30C, PCM31, PCM31C)
- Fractional test signal in N x 64 kbps, where N=1 to 30/31

#### 8.448 Mbps (E2)

- Unframed or Framed according to ITU-T G.742

#### 34.368 Mbps (E3)

- Unframed or Framed according to ITU-T G.751

#### 44.736 Mbps (DS3)

- Unframed or Framed M13 & C-Bit Parity per ITU-T G.752/G.704

#### 139.264 Mbps (E4)

- Unframed or Framed per ITU-T G.751

### Test Patterns

The following test patterns can be generated

- PRBS:  $2^{31}-1$ ,  $2^{23}-1$ ,  $2^{20}-1$ ,  $2^{15}-1$ ,  $2^{11}-1$ ,  $2^9-1$ ,  $2^7-1$ , QRSS
- Fixed: 0000, 1111, 1010, 1100, 1in8, 2in8, 3in24, DALY, NET55 and OCT55
- User defined: Ten 32-bit and one 24-Bit Programmable sequences
- Mode: Normal or Inverted

### Errors

#### Insertion

- 1.544 Mbps (DS1): Code, FAS, Bit, Frame, CRC
- 2.048 Mbps (E1): Code, FAS, CRC, EBIT, Bit errors
- 8.448 Mbps (E2): Code, 8M FAS, 2M FAS, 2M CRC, 2M RDI, Bit errors
- 34.368 Mbps (E3): Code, 34M FAS, 8M FAS, 2M FAS, 2M CRC, 2M RDI, Bit errors
- 44.736 Mbps (DS3): Code, FAS, MFAS, P/C-Parity, Bit errors
- 139.264 Mbps (E4): Code, FAS, Bit errors
- Modes: Single, Count (# of errors), Fixed Rates (1E-9 to 1E-3)

#### Measurement

- 1.544 Mbps (DS1): Code, FAS, Bit, Frame, CRC
- 2.048 Mbps (E1): Code, FAS, CRC, EBIT and Bit errors
- 8.448 Mbps (E2): Code, FAS, Bit errors
- 34.368 Mbps (E3): Code, FAS, Bit errors
- 44.736 Mbps (DS3): Code, FAS, MFAS, P/C-Parity, Bit errors
- 139.264 Mbps (E4): FAS

### Alarms

#### Generation

- 1.544 Mbps (DS1): AIS, yellow, idle, LOS, LOF
- 2.048 Mbps (E1): LOS, AIS, LOF, RDI
- 8.448 Mbps (E2): 8M AIS, 8M LOF, 8M RDI, 2M AIS, 2M LOF, 2M RDI
- 34.368 Mbps (E3): 34M LOS, 34M AIS, 34M LOF, 34M RDI, 8M AIS, 8M LOF, 8M RDI, 2M AIS, 2M LOF, 2M RDI
- 44.736 Mbps (DS3): LOS, LOF, OOF, AIS, Parity

- 139.264 Mbps (E4): LOS, AIS, LOF, RDI

Measurement

- 1.544 Mbps (DS1): AIS, yellow, idle, LOS, LOF, LSS
- 2.048 Mbps (E1): LOS, AIS, LOF, LOMF, RDI, and LSS
- 8.448 Mbps (E2): LOS, AIS, LOF, RDI, and LSS
- 34.368 Mbps (E3): LOS, AIS, LOF, RDI, and LSS
- 44.736 Mbps (DS3): LOS, LOF, OOF, AIS, Parity, LSS
- 139.264 Mbps (E4): LOS, AIS, LOF, RDI
- Modes: Continuous (manual), Count (0.1, 1, 10, 100 seconds)

**Measurement Functions**

Test Results

Error count, ES, %ES, SES, %SES, UAS, %UAS, EFS, %EFS, AS, %AS, and rate for all events: errors, alarms and pointer events

Performance Analysis

Measurements according to:

- ITU-T G.821: ES, EFS, SES and UAS with HRP 1% to 100%
- ITU-T G.826: EB, BBE, ES, EFS, SES, UAS; HRP of 1% to 100%
- In Service Measurement (ISM) using B1, B2, B3, FAS, CRC or Code (E1)
- Out of Service measurement (OOS) using bit errors (Test Sequence Error)
- ITU-T G.828: ES, EFS, SES, BBE, SEP, UAS with HRP 1% to 100%
- ITU-T G.829: ES, EFS, SES, BBE, UAS on RSOH (B1), MSOH (B2) or TSE
- ITU-T M.2100: ES, EFS, SES, UAS with HRP 1% to 100%
- User defined thresholds for Maintenance (MTCE) and Bringing into Service (BIS) objectives
- ITU-T M.2101: ES, EFS, SES, BBE, SEP, UAS with HRP 1% to 100%
- User defined thresholds for Maintenance (MTCE) and Bringing into Service (BIS) objectives. In service measurements on both near and far ends of path using TSE, HP-BIP/P-BIP (B3), MS-BIP/L-BIP (B2), RS-BIP/S-BIP (B1) and LP-BIP/V-BIP (V5)

**G.703 64k Codirectional Testing Option**

This legacy interface still plays a role in today’s communication, supervisory control and data acquisition applications. It is often used by utilities’ telemetry and teleprotection equipment.

Interfaces

- RJ48 (120Ω) , Bantam (100Ω)
- Available RJ48 to 3-pin Banana converter

Transmit Clock

- Internal, External, Received
- Frequency offset generation to ±150.00 ppm

Measurements

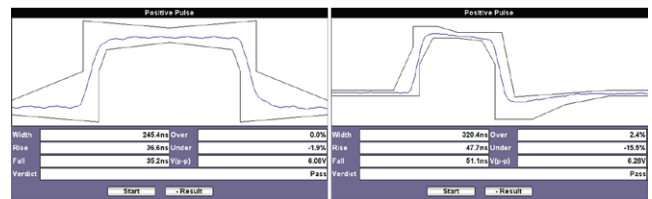
- Bit, Code, LOS, AIS, pattern loss (LSS) with Histogram and Bar Graph representation
- G.821 performance evaluation
- Signal level, data rate and offset
- Time-stamped Events Log
- Round-trip Delay

Error and Alarm Generation

- Bit, Code, LOS, AIS

**Pulse Mask Analysis**

PDH/DSn signals may fail pulse shape requirements due to interference, excessive cable length, improper impedance, open cable branches or poor transmitter characteristics. In such cases, G.703 Pulse Mask compliance verification is very useful in diagnosing related physical layer problems.



PDH

- Bit rates: 2.048 Mbps (E1) and 34.368 Mbps (E3)
- Conformance Mask: ITU-T G.703

DSn

- Bit rates: 1.544 Mbps (DS1) and 44.736 Mbps (DS3)
- Conformance Masks: ITU-T G.703, ANSI T1.102, T1.403, T1.404

Mode: Non-Intrusive

Display: Pulse shape graph with Conformance mask verification (Pass/Fail)

Parameters: Width, Rise/Fall time, Overshoot/Undershoot

## DSn Functions\*

### DS1 and DS3 Auto-Monitor

Quickly auto-configures to the received signal and runs a health check. Provides a summary screen with all alarm indications, frequency, signal level, BPV/code errors, FBE, clock slips  
Histogram and bar graph representation of errors and alarms  
Channelized DS3 support with selectable DS1 channel status

### DS1 Loopback Commands

Enhanced DS1 Loopback command generation enable users to singlehandedly test DS1 links by activating automated loopbacks in the desired network elements.

In-band:

- CSU, NIU FAC1, NIU FC2 ESF Facility Data Link (FDL) Control

Line and payload HDSL Abbreviated (short)

- From Network (CO) or CPE
- NLOC, NDU1, NDU2, NREM

HDSL Long (In-band)

- From Network (CO) or CPE
- 2-wire and 4-wire
- HTU-C, H4R1, H4R2, H4R3, HTU-R
- Arm, Query Loop, Time-out override, Loopback Query, Loop Up, Loops down, Disarm commands
- Detailed confirmation messages

User Defined codes

- Programmable codes up to 16 bits
- Programmable time out

### DS1 Multi-BERT™

Bring into service and troubleshoot DS1 links quickly by automatically generating different test patterns in a sequential BER test. Since certain test patterns can help identify and test for specific problems or behaviors, the test sequence can be customized with specific test patterns and timings to target specific test scenarios, like checking for proper line coding settings, framing, or clock recovery.

- Sequential BER testing with up to eight test patterns (any standard test pattern in any order)
- Single cycle and Continuous operations
- Individual pattern timing up to 3599 seconds (1 hour)
- Bit, Code, FBE, ES, and total test time report, per pattern and totals
- Monitors signal frequency, level (dB and dBm) and CRC error count

\*These features are only available in the USA user interface mode

## IEEE C37.94™ Teleprotection Option

This low rate optical interface still plays a significant role in today's supervisory control and data acquisition (SCADA) applications. C37.94 links are often used by power and utility industries for telemetry and teleprotection applications.

Interfaces

- Wavelengths: 850 nm, 1310 nm MMF, 1310 nm SMF\*
- Connectors: LC-PC\*\*
- IEEE C37.94 framing, overhead and data structures

Transmit Clock

- Internal, External, Received
- Frequency offset generation up to  $\pm 25000$  ppm, to stress the recommended  $\pm 100$  ppm limits

Data Rates

- N = 1 to 12 (64 to 768 kbps)
- Automatic RX rate configuration (N)

Test Modes

- Terminal (TX1, RX1)
- Bi-directional Pass-through Monitor (RX1→TX2, RX2→TX1)

Measurements

- LOS (Signal and Frame), AIS, RDI (Yellow), FAS, Pattern Loss (LSS) and Bit Errors (TSE)
- Histogram and Bar Graph representation
- Time-stamped Events Log
- G.821 performance evaluation
- Signal level, data rate, offset, SFP information\*
- Round Trip Delay (RTD) with 10  $\mu$ s resolution
- View Received Data (Framing, Overhead, Data)

Error Injection

- Bit, FAS
- Single, Count and Rate

Alarm Generation

- LOS (Signal), LOS (Frame), AIS, RDI (Yellow)
- Continuous, Timed (Count)

\* Dependent on SFP transceiver. Not all SFPs are compatible with C37.94.

\*\* LC-to-ST (BFOC/2.5) converter cable may be required.

## Common Functions & Measurements

### Service Disruption and APS Testing

Service disruption time (SDT) measurements are integrated to the regular BER tests, supporting multi-layer sensor monitoring and events table for OTN, SDH/SONET and PDH/DSn

#### OTN Sensors

- LOS, OTU-AIS
- OTU-LOF, OTU-LOM, OTU-IAE, OTU-BDI, SM-BIAE, ODU-AIS, ODU-LCK, ODU-OCI
- FAS, MFAS, OTU-BIP, OTU-BEI, ODU-BIP, ODU-BEI

#### SDH Sensors

- LOS, LOF, FAS
- B1, MS-AIS, MS-RDI, MS-REI, B2, AU-AIS, AU-LOP, B3, HP-RDI, HP-REI, TU-AIS
- PDH payload-related triggers
- LSS

#### SONET Sensors

- LOS, LOF, FAS
- S-BIP, AIS-L, RDI-L, REI-L, L-BIP, AIS-P, LOP-P, P-BIP, RDI-P, REI-P, AIS-V
- PDH payload-related triggers
- LSS

#### PDH (E1) Sensors

- E1-LOF, E1-AIS
- LSS

Pass/Fail range: 15 to 200 ms

Gate Time: 20 to 4000 ms

#### SDT Results Summary

- Last Service Disruption Time
- Longest Service Disruption Time
- Shortest Service Disruption Time
- Time stamps
- Resolution: 10  $\mu$ s
- Total number of Service Disruptions events observed

#### Disruption Events Table

- Tracks every Service Disruption event for all layers
- Time stamp with 10  $\mu$ s resolution
- Duration with 10  $\mu$ s resolution
- Individual Pass/Fail Verdicts
- Tracks individual sensor events that occurred during the disruption period with time stamp and duration (10  $\mu$ s resolution)

#### APS Testing

- SDH/SONET APS Byte (K1/K2) sequence capture and decode

### Auto Configuration

Auto configure simplifies instrument setup when properties of the incoming test signal are unknown. This feature allows novice users to start performing measurements quickly.

- Available for SDH, PDH, SONET and DSn signals
- Identification of received signal - instrument configuration based on network type, bit rate, line coding, framing, mapping, and test pattern

### Signal Level and Frequency Measurement

Available for Optical and Electrical Interfaces

#### Signal level

Optical power in dBm and Loss/Saturation graph

Electrical level in Volts peak-to-peak, dB and dBm

#### Frequency (Line and Payloads)

Resolution: 1 bit/s (bps)

#### Frequency Offset

Resolution: 0.1 ppm Current, Minimum and Maximum

#### Clock Slips (E1 and DS1)

### Round Trip Delay

(Available for all interfaces & mappings)

Measurement Range: 1  $\mu$ s to 10 seconds

Resolution:  $\pm 1$   $\mu$ s or 1 U.I.

### Event Logging

Date and time stamped records of all error and alarm events occurred during a test, presented in tabular format

### Histograms

Histogram: Simultaneous display of Errors and Alarms versus time for sequence of events correlation

Bar Graph: Individual Error, Alarm severity and power level versus time

Resolution: Seconds, minutes, hours and days

### Soft LED Indicators

Summary indicators for Signal, Framing, Pattern sync and Errors/Alarms

Dual LED row for Ethernet in EoOTN test mode

Display historical events and conditions

History reset function

- Clears the LED reminder without affecting the measurement counters

## Synchronous Network Features

Many services and underlying functions running on modern digital communications networks depend on accurate frequency and/or phase synchronization for correct operation. SDH/SONET, PDH/DSn, SyncE, 1588v2 PTP and are some of the technologies being used to deliver synchronization to the edge of the network. Their recovered clocks must be verified.

The advent of carrier Ethernet as the transport technology of choice for metro networks and next generation high-speed cellular networks, have made SyncE and PTP very popular solutions for bridging the frequency, phase and time synchronization gap created by those otherwise asynchronous links. Pushing synchronization testing farther away from the core, to the very edge of the network footprint, making portable and self-contained test sets a strong requirement.

### IEEE 1588v2/PTP Master Clock Emulation Mode

Master Clock emulation allows network synchronization properties to be verified prior to service delivery or during routine maintenance tasks. Using an external 1.544 Mbps, 2.048 Mbps, 1.544 MHz, 2.048 MHz, 10 MHz, 25 MHz, 125 MHz, or 1 PPS signal as the reference clock, the unit generates the PTP messages needed by a Slave device to synchronize.

The reference clock can further be applied to an outgoing 1.544 Mbps or 2.048 Mbps signal via balanced RJ45 or bantam interfaces or alternatively a 1.544 Mbps, 2.048 Mbps, 10 MHz, 25 MHz, 125 MHz, or 1 PPS signal can be generated on the unbalanced BNC port for other synchronization requirements. In this mode, the unit can be programmed to generate PTP messages at different rates to reduce or introduce network congestion.

Master clock emulation

- Unicast and multicast master emulation
- Layer 2, IPv4 and IPv6 support
- 2-step clock
- Configurable announce, Sync and Delay\_req rates and domain number, Clock class and Clock priority

### IEEE 1588v2/PTP Slave Clock Emulation Mode

Emulates a Slave Clock device where synchronized clock is extracted using the PTP procedure. After an IP layer connection is achieved, clock identities are exchanged between the test unit and the far end Master clock device. The PTP messages can be monitored and decoded.

In the Summary tab, an overview of the Total, CRC, lost, error, out of order and duplicated messages are displayed. The Message tab provides a concise record of all PTP message related items, while the Results tab provides detailed statistics and values for Packet Delay Variation (PDV), Master to Slave (T1) and Slave to Master (T4) delay measurements and Inter-Packet Gap (IPG).

Slave clock emulation

- Unicast or multicast slave emulation
- Layer 2, IPv4 and IPv6 support
- 1-step or 2-step clock
- Configurable announce, Sync and Delay\_req rates and domain number

### PTP Measurements

- Message counters (Sync, Follow up, Delay Request/Response, Pdelay Request/Response, signaling, management) and statistics (Loss, CRC error, duplicate, out of order)
- PTP messages display and decode
- PTP messages capture in pcap format
- PDV measurements and graph display (Sync PDV, Delay\_Req PDV)
- Master to Slave (T1) and Slave to Master (T4) delay measurement
- Boundary Clock TE measurement
- Master and Slave Clock Emulation with 2 ports
- IPG measurements and graph display

### PTP Through Mode and PDV Analysis

- 2 Modes of operation: Port 1 to Port 2 Pass-through or transparent monitoring with optical splitter
- Bi-directional analysis of 1588 PTP traffic
- PTP Packet Statistics (received, lost, errors ....)
- Ethernet Statistics
- Bi-directional PTP traffic capture (pcap file)
- PDV graphs
- Master to Slave (Forward delay) and Slave to Master (Reverse delay) measurement
- PDV Measurements
- Slave wander analysis
- Packet MTIE and TDEV Analysis
- PDV FPP, FPC and FPR metrics per ITU-T G.8261.1 standard

### ITU-T G.8261 SyncE Master Clock Emulation Mode

The reference clock can be from an external clock source at 1.544 Mbps, 2.048 Mbps, 1.544 MHz, 2.048 MHz, 10 MHz, 25 MHz, 125 MHz, or 1 PPS rate. The output reference clock can be synchronized to 1.544 Mbps or 2.048 Mbps and provided at the DS1/E1 port or a 1.544 MHz, 2.048 MHz, 10 MHz, and 1 PPS clock signal can be made available on the unbalanced BNC port.

### ITU-T G.8261 SyncE Slave Clock Emulation Mode

Extracts clock information from the incoming Ethernet signal at the 10/100/1000Base-T, 100Base-FX, 1000Base-X, and 10GBase-X interface. The recovered reference clock can be applied to a 1.544 Mbps or 2.048 Mbps signal at the DS1/E1 port or a 1.544 MHz, 2.048 MHz, 10 MHz, 25 MHz, 125 MHz, or 1 PPS clock signal can be made available on the unbalanced BNC port. Clock and Wander are measured against the reference clock.

### ESMC SSM Clock Quality Messages

SDH/SONET (S1) and E1 (Sa) SSM QL message encoding and decoding SyncE ESMC/SSM messages generation with configurable type and rate. Includes ESMC SSM messages TX/RX display, decode, counters and capture

IEEE 1588v2 clock class generation, decoding and message capture Master/Slave clock emulation

- ESMC SSM generation: configurable message type and rate
- ESMC SSM generation: configurable message type and rate
- ESMC SSM messages counters
- ESMC SSM messages display and decode
- ESMC SSM messages capture in pcap format



### Synchronization Messages Capture

Message capture and decode for SyncE ESMC/SSM and IEEE 1588v2 messages. Captures in pcap format for further analysis using built-in or external protocol analyzers.

### Recovered Clock

Master clock emulation: Offers recovered clock output (clock translation) for external analysis or to provide timing to other devices

Slave clock emulation: Offers recovered clock output (clock translation) for external analysis or to provide timing to other devices

Recovered Clock Output (Clock Translation)

- 1PPS, 2.048 Mbps, 2.048 MHz, 10 MHz, 25 MHz, 125 MHz

### Reference Clock

Reference Clock (Master Emulation and Wander/Phase Measurements)

- External: 1PPS, 1.544 Mbps, 1.544 MHz, 2.048 Mbps, 2.048 MHz, 10 MHz, 25 MHz, 125 MHz

### Clock Wander & Phase Measurements

This option compares two physical clock sources and measures TIE (wander) or Timing Error (absolute phase error) differences between the signal present at the RX1 (BNC) test port and the external reference connected to the CLK (SMA) port. Reports current, minimum, maximum and average phase differences

- Phase Error vs. Time on-screen graph (monitor the last 600s)
- Wander Resolution: 0.2 ns
- Phase Error Resolution: 1 ns
- Phase Accuracy: ± 6.4 ns

Signals Under Test

- Frequency: 1.544, 2.048 and 10 MHz
- Data: 1544 and 2.048 Mbit/s
- Phase/Timing: 1PPS

Clock References

- Frequency: 1.544, 2.048, 10 MHz
- Data: 1.544 and 2.048 Mbit/s
- Phase: External 1PPS

### Recovered Clock Wander Measurements

These options measure the wander characteristics of the data clock recovered by the test set slave emulation, against an external reference connected to the CLK (SMA) port.

Signals Under Test (recovered clock)

- T1, T3, E1, E3, STM-1o, OC-3
- SyncE Slave

Clock References

- Frequency: 1.544, 2.048, 10 MHz
- Data: 1.544 and 2.048 Mbit/s
- Wander Resolution: 0.2 ns

### Real-time Wander & Phase Data Logging

This option exports real-time TIE or Phase measurements to a USB memory for further post-processing using the built-in or PC-based MTIE & TDEV Wander Analysis applications.

Modes: E1, E3, DS1, DS3, STM-1o, OC-3, SyncE, IEEE 1588v2, external clock signals

Sampling rates: 1/s, 5/s, 10/s, and 30/s

Recording Time: Limited only by the size of the USB memory

File formats

- VeEX's native TIE and Phase (TE)
- Open CSV TIE and Phase (TE)

### Built-in MTIE/TDEV Wander Analysis

This option enables the test set to analyze up to three days' worth of wander measurement data and compare it against standard masks for a PASS/FAIL assessment, without the need for a PC. The analysis can be performed while the test is still running for run-time verification.

- Provides further post-processing of clock stability data, such as MTIE and TDEV
- Real-time or post analysis modes
- Frequency offset calculation and removal for relative TIE analysis
- Standard MTIE and TDEV masks
- MTIE and TDEV results and mask export to CSV
- Direct PDF report generation to USB



### VeEX MTIE/TDEV Wander Analysis PC software

- Provides further post-processing of clock stability data, such as MTIE and TDEV for long-term tests
- Frequency offset calculation and removal for relative TIE analysis
- Standard and user-programmable masks
- PDF report generation
- Fully resizable window, to accommodate any screen size and provide detailed zoom levels
- Compact stand-alone Windows® software. It can be carried in the same USB memory as the TIE data. No installation is necessary

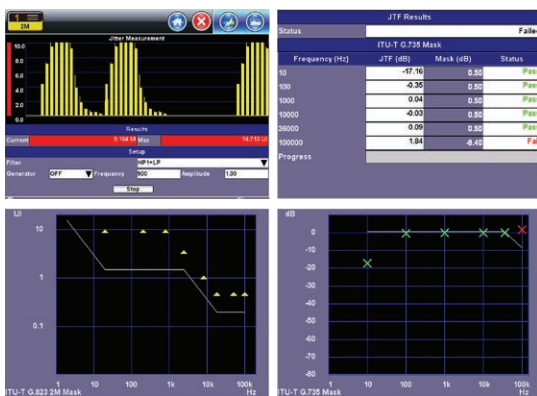
## Jitter Measurement Options

Complete SDH/SONET and PDH/DSn Jitter Test Suite

- Jitter Measurements
- Jitter Generation
- Maximum Jitter Tolerance test
- Jitter Transfer Function test

Graphical and tabular results

Output jitter performance mandated by ITU-T 0.171/0.172 and Telcordia GR-499/253 standards is evaluated by measuring the recovered clock of the incoming signal (E1, E3, STM-1o and DS1, DS3, OC-3) traversing the network. In SDH/SONET networks there is a great potential for the accumulation of jitter to degrade network performance, thus it is imperative that components and the network as a whole be tested and screened regularly for jitter to ensure that optimum levels of quality can be maintained.



### Jitter Measurements

HP1+LP (Wide-band Jitter) filter

- E1 (2M) 20 Hz to 100 kHz
- E3 (34M) 100 Hz to 800 kHz
- DS1 (1.5M) 10 Hz to 40 kHz
- DS3 (45M) 10 Hz to 400 kHz
- STM-1/OC-3 (155M Optical) 500 Hz to 1.3 MHz

HP2+LP (High-band Jitter) filter

- E1 (2M) 18 Hz to 100 kHz
- E3 (34M) 10 Hz to 800 kHz
- DS1 (1.5M) 18 Hz to 100 kHz
- DS3 (45M) 30 Hz to 400 kHz
- STM-1/OC-3 (155M Optical) 65 Hz to 1.3 MHz

Parameters: Current peak-peak, Maximum peak-peak

Color-coded Pass/Fail indication according to ITU-T limits

Standard Pass/Fail masks

Units: UI (Unit Interval)

Resolution: 0.01 UI

Accuracy: Per ITU-T O.171 and O.172

Graphical display of Jitter behavior over time

Test Duration: Continuous

### Jitter Generation

Frequency: 1 Hz to 1.3 MHz

Amplitude: 0.01 to 50 U<sub>pp</sub>

Resolution: 1 Hz, 0.01 UI

## Fibre Channel

### Key Features

- Full line rate traffic generation and analysis
- Primitive Sequence Protocol support
- Flow control support with Buffer-to-Buffer credits
- FC-1 and FC-2 BERT and Throughput
- RFC2544: Throughput, Latency, Frame Loss, and Back-to-Back frames tests
- FC-2 Smart Loop mode
- Service Disruption Measurement
- FC-2 Frame Header configuration
- Test traffic shaping: constant, ramp, and burst
- Frame Length configuration up to 2148 bytes

### Throughput and Bit Error Rate Test (BERT)

The Fibre Channel protocol specifies a maximum allowable Bit Error Rate (BER) of  $\leq 1 \times 10^{-12}$  that must be achieved. The test set allows the user to stress FC-1 and FC-2 network layers to ensure accurate benchmarking.

For FC-1, frequency fluctuations, transceiver noise and phase jumps are tested using CRPAT, CSPAT, and CJPAT patterns. Data dependency and behavior of network components are checked with PRBS patterns, sequence number tracking, and time stamping to calculate frame loss, round trip delay, and other performance metrics.

### RFC2544 Benchmarking

Based on the Ethernet test methodology, the RFC2544 routine has been adapted to Fiber Channel circuits where flow-control and buffer verification is important. The feature checks throughput and round trip delay at various buffer sizes to verify optimal buffer size and best possible link performance.

### Fibre Channel Interfaces

Single (TX300sm) or Dual (TX320sm) 1/2/4/8/10 Fibre Channel XFP/SFP or SFP+ optical Ports: LC connectors

### Fibre Channel Rates

1.0625 Gbps, 2.125 Gbps, 4.25 Gbps, 8.5 Gbps, and 10.52 Gbps  
8.5 Gbps available on TX320sm only

### Modes of Operation

Terminate, Loopback

### Fibre Channel Topology

Point-to-Point

### Primitive Sequence Protocols

Link initialization, link rest, link failure

### Flow Control

Buffer-to-Buffer Credit Configuration: 1-65535

### Traffic Generation

FC-1 (with SOF and EOF frame delimiters) and FC-2 Frames

Class 3 Service frames

Scrambling/Descrambling (8.5 Gbps only)

Configurable Header fields

Configurable EOF (EOF\_t, EOF\_n), and SOF (SOF\_i3, SOF\_n3, SOF\_f)

Traffic Shaping: constant, ramp, burst

Frame Length Configuration: 2148 bytes maximum

### RFC2544 Compliance Testing

Automated tests compliant with RFC2544 with configurable threshold values for Throughput and Round Trip Delay (Latency) and maximum transmit bandwidth settings

Throughput, Latency, Frame Loss, and Back-to-Back (burst) tests

Frame sizes: 64, 128, 256, 512, 1024, 1280, and 2000 bytes including 2 user configurable frames

### Bit Error Rate Testing

NCITS-TR-25-1999 Patterns (FC-1): CRPAT, CSPAT, CJPAT

PRBS Patterns (FC-2):  $2^{31}-1$ ,  $2^{23}-1$ ,  $2^{15}-1$ ,  $2^{11}-1$ , normal and inverted selections, and user defined patterns

Error Injection: Bit and CRC

### Loopback Mode

FC-1

FC-2 (Layer 2): swaps the destination and source IDs (D-ID and S\_ID)

### Key Measurements

Optical power levels: transmit and receive optical levels in dBm

Error Measurements: Bit error count, BER, symbol, FCS/CRC, oversize, undersize, frame loss (count and %), out of sequence frame count

Alarm Detection: LOS, pattern loss, service disruption

Traffic Statistics: bandwidth utilization, data rate, frame count, byte count, frame size distribution, buffer-to-buffer credit count, RR\_RDY count, frame loss count and round trip delay

Rates: line rate, framed rate, data rate, frames per second rate

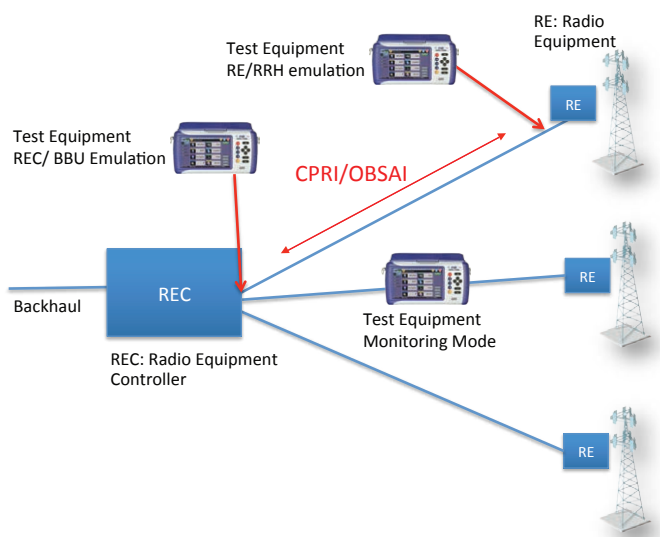
Delay (min, max, avg, current): round trip delay, frame arrival delay

## CPRI & OBSAI Testing

Traditional deployment of the base station functions are co-located with the radio tower at the base of the antenna or basement of a tall building.

The Common Public Radio Interface (CPRI) and Open Base Station Architecture Initiative (OBSAI) protocols introduce a centralized model where one REC (Radio Equipment Controller) can manage many REs (Radio Equipment). The REC can be physically located far from radio towers in a centralized indoor and temperature controlled location. The CPRI/OBSAI optical link between REC and RE allows long distances without loss.

Simplified RE function makes field elements more compact, easier to install, and therefore increases the number of possible sites. Further Capex and Opex improvements are possible by having one REC manage many towers, and increased deployment flexibility to add new cell sites.



### BERT

Test network performance with Layer 2, Layer 1 Framed and Unframed BERT with PRBS stress pattern. Verify BER, code violations, alarms and service disruption testing. CPRI Layer 2 testing includes REC or RE emulation, BER traffic generation, control words decode and frame capture capabilities to troubleshoot interoperability, transport or RF performance issues.

### Latency Measurement

Highly accurate latency measurements ensures that CPRI traffic between controller and the radio equipment stays below standard specifications.

### CPRI/OBSAI Rates

614.4 Mbps, 1.2288 Gbps, 2.4576 Gbps, 3.072 Gbps, 4.9152 Gbps, 6.144 Gbps, 9.8304 Gbps interface per CPRI (Common Public Radio Interface) standard

768 Mbps, 1.536 Gbps, 3.072 Gbps, 4.9152 Gbps, 6.144 Gbps per OBSAI (Open Base Station Architecture Initiative) standard

### Traffic Generation

Unframed BER (CPRI up to 9.8304 Gbps, OBSAI up to 6.144 Gbps)  
Layer 1 Framed and Layer 2 CPRI BER Test with PRBS stress test pattern up to 6.144 Gbps (TX300sm) and up to 9.8304 Gbps (TX320sm)

### CPRI Layer 2

REC/BBU Emulation and RE/RRH Emulation

Error Injection: Bit, Code Violation

Alarm Injection: LOS, LOF, SDI, RAI, RLOS, RLOF

Error measurements: Bit, BER, CV, CV Rate, Pattern Loss

Alarms detection: LOS, LOF, HLOF, HLOF, BLOF,SDI, RAI, RLOS, RLOF

Latency measurement

Service Disruption Test

Frequency and Offset (current, min, max)

TX/RX Hyperframes and NodeB Frames counters

Configurable HDLC and Ethernet C&M channels

Control Words decode

CPRI Hyperframes capture

9.8 Gbps Layer 2 available on the TX320sm only

### Bi-directional Monitor Mode (TX320sm)

Bi-directional traffic analysis and monitoring between RE and REC, and hyperframe capture

## General

Size	4.4 x 27.3 x 43.2 (H x W x D) 1 ¾ x 10 ¾ x 17
Weight	Rack mounted, 1U 19" wide 3.18 kg (7 lb) including 2 modules 2.87 kg (6.33 lb) including 1 module
Power Consumption	
Active	Chassis: 10W RTU-320 Module: 20W (37W for double) RTU-600x Module: 45W
Unit Power Input	AC Power: 100 to 240 VAC 50/60 Hz 1.5 A DC Power: 16V 5.5A
Environmental	
Operating temperature	0 to 45°C (32 to 113°F)
Storage temperature	-20 to 70°C (-4 to 158°F)
Humidity	5% to 90% relative humidity, non-condensing

ROHS compliant and Lead Free per Directive 2002/95/EC

