

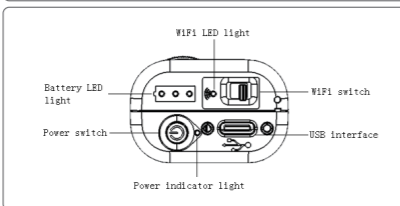
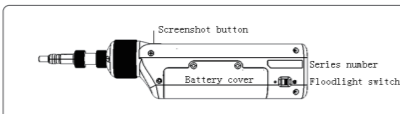
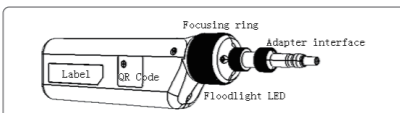
EasyGet Wifi

Wireless Fiber Endface Microscope

Product Manual

Dimension Technology Co., Ltd

Product Description



Note Item

- * Attention to keep the video display interface clean, no fat, no pollution.
- * The equipment should be protected from moisture, otherwise it may cause damage to the equipment.
- * It is best to place it in the instrument case when not in use for a long time.
- * Check the power of the equipment before use, and if only one light is on and flashing, charge it before use.
- * Please activate the device after removing the battery each time.
- * Device body camera button is enabled when WiFi connection is in use.

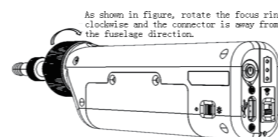
Hardware Features

- * Series of adaptors meet a variety of testing needs.
- * High-quality optical components, high-resolution CCD sensor for accurate end face inspection.
- * Supports multiple connections: WiFi- USB.
- * High capacity rechargeable battery, over 5 hours work time.
- * Humanized front light is conducive to the operation of various environments.
- * Equipped with high impact resistance protective cap to extend equipment life.
- * Convenient camera button, easy to use.
- * Looks small, simple, beautiful, one hand to complete the operation.

Operation Introduction

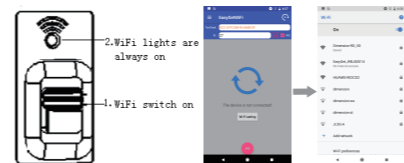
Note: For more instructions, please refer to the user manual in the software.

1. Focus

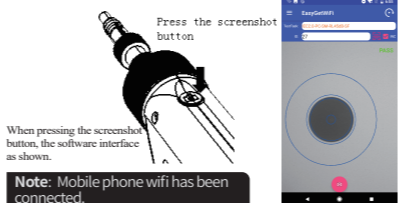


2. WiFi Connect

Note: WiFi default password is 12345678

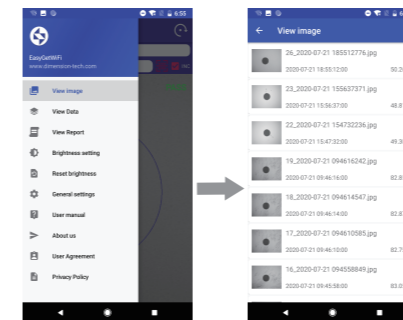


3. Take picture



Note: Mobile phone wifi has been connected.

4. View Image



Specifications

Item	Parameter
Power	2.0W
Power adapter	DC 5V/2A
Size	212*45*32mm
Weight	188g
Software compatible version	Android 4.2/ iOS 9.3/PC Win7 / Linux2.6 or higher

To learn more

You can visit www.weiduj.com for more information about the product.

Important Safety Information

- * Before using this equipment, please read all safety information to ensure correct and safe use.
- * Use of an adapter, charger, or battery that is not approved by the manufacturer may cause a fire explosion, or another hazard. Please use the accessories approved by this manufacturer.
- * Do not replace the battery yourself to avoid damage to battery or equipment. The battery can only be replaced by a service center.
- * Please charge with the manufacturer's specific charger, to avoid leakage, fire, damage to the equipment and charger.
- * If charging is complete, disconnect the charger from the device and unplug the charger from the power outlet. Continuous charging time should not exceed 12 hours.
- * Please follow the local regulations to handle the battery. If the battery is improperly handled, it may cause the battery to fire and explode.

* The battery is prohibited from impact, squeezing or putting in a fire. Do not continue to use it if it is experiencing severe expansion.

* Do not repair this equipment yourself.

* Please do not connect any unassigned equipment.

Service Policy

Warranty Term

We warrant that for a period of one (1) year from the Shipping Date, the product purchased by the customer shall be free of defects in material and workmanship under normal authorized use consistent with the product instructions.

Warranty Content

In the event that we receive notice during the warranty period that any part does not conform to its warranty, our sole and exclusive liability shall be, at its sole option, to either repair or replace the non-conforming part in accordance with this limited warranty.

Warranty Exception

No warranty will apply if

- (1) Device damage caused by the wrong operation;
- (2) Unconventional repair or modification;
- (3) The causes of failure outside of the instrument;
- (4) Used in high temperature and humidity, corrosive gas, harsh conditions such as vibration;
- (5) Fires, earthquakes and other natural disasters as well as the pollution caused by radioactive substances and harmful substances, and when the other force majeure such as war, riot, crime;
- (6) Consumables and consumable parts.